

Wichita EWI Connect



2023-2024 President

**Ashley Goodman
IMA Financial Group**

Inside this Connect

Page 1: President's Message

Page 2: Treasurer's Report

Page 3: Director Messages

Page 4: LCAM Highlights

Page 5: Reading Rally

Page 6: Reading Rally Event

Page 7: Save The Date

Page 8: November Chapter
Meeting

Page 9: Birthdays

Page 10: Contact Information

Happy November!

Thank you to each of our sponsors and volunteers who assisted with the Colvin Reading Rally. The students and teachers were very appreciative of our efforts and had a great time! The reading rally is such a heartwarming part of EWI that I appreciate greatly. Please look further into the Connect for some pictures at Colvin!

Also completed in the month of October, was strategic planning for the year. I would like to be transparent with the details of the strategic plan as it is up to each of us to make it a reality! The top goals for the board in the next year includes representative attendance of 20 individuals at each meeting, retain (at least) 90% of our membership for the 2023-2024 fiscal year (October 1st of each year), increase overall membership by 1 rep and/or firm each quarter, raise \$5,550 in fundraising efforts through our Fireside/Fundraiser meeting fees and additional donations throughout the year and at the fundraising event. Some ways the board will be focusing on making these initiatives come to fruition include offering some diverse meeting times, over-communicate within the chapter, assess representative feedback through a yearly membership survey, have new members attend a new member orientation, post and target firms each month to actively pursue. We were fortunate to gain recognition as Chapter of Excellence for the 2022-2023 year under the leadership of Allison Walden, and I hope to continue that trend for the 2023-2024 year! I appreciate the quote by Vince Lombardi, "Individual commitment to a group effort – that is what makes a team work, a company work, a society work, a civilization work".

I look forward to seeing everyone on November 15th at Board and Brush to get creative and make some holiday décor! Please remember to sign up on Squad Up by October 8th.

Thank you!

Sincerely

Ashley

Director Messages

Treasurer's Report
Emma Hahn, Treasurer
Stoutheart Financial Group



Please send payments to:

Emma Hahn

Stoutheart Financial Group

8621 E. 21st St. N., Suite 130

Wichita, KS 67206

Commerce Operating Account:

10/1/23 Opening Balance: \$17,919.59

10/31/23 Reconciled Balance: \$16,458.56

Deposits:

Regular Meeting Dues: \$1,440.00

Executive Night Dues: \$240.00

QuickBooks Refund: \$60.67

Expenses:

Regular Meeting Expense: \$645.26

LCAM Travel: \$1,585.20

Website Fees: \$370.73

Operating Fees: \$28.00

Software Fees: \$260.00

Hospitality Supplies: \$92.39

Reading Rally Supplies: \$208.21

Miscellaneous (accidental payment to be reimbursed): \$11.91

Commerce BCDP Account:

10/1/23 Opening Balance: \$1,198.85

Meritrust Savings Account:

10/1/23 Opening Balance: \$24,288.24

10/31/23 Reconciled Balance: \$24,298.26

Deposits:

1. Interest: \$1.02

Expenses: N/A

Director Messages



Dear EWI,

Happy Early Thanksgiving EWI! We all have so much to be grateful this time of year. I am thankful for what EWI has to offer to the community like our upcoming Colvin Elementary Food Drive. While I am still settling into my new role as VP on board, we all have been hard at work for you. When I am not at EWI, I am still hard at work in our community as I am the sports event manager for Visit Wichita. We have a very busy month of soccer with hosting the National Junior College Athletics Association Division I Men's and Women's National Championships and the National Association of Intercollegiate Athletics Men's Soccer Tournament. If you or your organization would like to dive into volunteering for sporting events, please contact me at jbuettenbach@visitwichita.com

*Jessica Buettgenbach, Vice President/President Elect,
Visit Wichita*

I look forward to continuing to serve EWI this year as both the Advisor to the Board and as Director-At-Large. I'm beginning to think about next year's ASIST and EWISP scholarships and our processes. If you have any ideas for improvement, ways to reach additional students, or know anyone who may be interested in serving as a judge, please reach out to me at waldena@dlwichita.com

**Allison Walden, Advisor/Director-At-Large
Downing & Lahey Mortuaries**



MEETING RECAP

LCAM 2023 Memories



Sydney Tuttle, Ashley Goodman, Presidents Reception



Ashley Goodman & Pam Dinwiddie, Annual Meeting & Installation



Carlotta Gentry, Davna Gould, Sydney Tuttle, Ashley Goodman, Kristina Helm, Pam Dinwiddie, Presidents Reception Gala



Pam Dinwiddie, Academy of Leadership Alumni Certificate Presentation



Ashley Goodman with Keynote Speaker Vincent Phipps

ewi READING RALLY

Thank you to everyone who supported this year's Colvin Reading Rally that was held on Tuesday, October 17th. A huge shoutout to our member firms who provided us the following donations:

- ◇ Books: Anie Murach, United Way of the Plains, Inc.
- ◇ T-shirts: Kristina Helm, Western Associates
- ◇ Pizza: Leesa Griffin, Berry Companies, Inc.
- ◇ Cookies: Ashley Goodman, IMA Financial Group, Inc.
- ◇ Drinks: Allison Walden, Downing & Lahey Mortuaries & Crematory
- ◇ Plates & Napkins: Dawn Truman, ReeceNichols South Central Kansas
- ◇ Teacher Gift Cards: Pam Dinwiddie, Textron eAviation & Tammy Voth, Textron Aviation
- ◇ Smile Kits: Sydney Tuttle, Delta Dental of Kansas
- ◇ School Supplies: Teresa Arthur, Commerce Bank
- ◇ Bags: Jessica Emrick-Davies, Wichita Marriott



FOOD DRIVE EVENT



Help fill boxes of food for the Colvin Elementary families to enjoy over the holiday break! These boxes of food are for some of the most at-risk families to have during the holiday season when resources are a challenge. Our goal is to provide 50 boxes! This year the EWI Wichita board will be packaging up all the boxes to expedite the process. We need your firm to help us purchase the food for the boxes.

Cost: \$100/box.

Payment Method: Cash, Check or PayPal

Deadline to participate: **November 22**

For questions, contact Jessica Buettgenbach at jbuettgenbach@visitwichita.com or 316-660-6331

Scan Me
PAYPAL QR



SAVE THE DATE

LEADERSHIP CONFERENCE & ANNUAL MEETING

September 18-21, 2024

TUCSON, AZ

Casino Del Sol, Tucson, AZ



MEMBER FIRM SPOTLIGHT

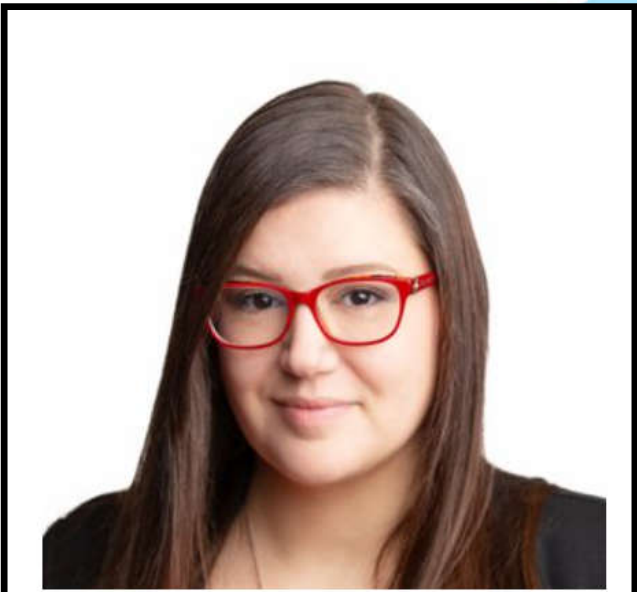


Congratulations to Hayley Hobbs, Butler County Community College, and Sydney Tuttle, Delta Dental of Kansas, both of whom were recently spotlighted in the Wichita Business Journal Young Professional in Professional Services series.

Congratulations, ladies!



Hayley Hobbs, Butler Community College Foundation >



Sydney Tuttle, Delta Dental of Kansas >



Join us

FOR THE EWI WICHITA

NOVEMBER CHAPTER MEETING

WEDNESDAY NOVEMBER 15

At Board and Brush

1108 E Douglas Ave Wichita, KS 67214

5:30 - 7:30 PM

**RSVP ON SQUAD UP BY WEDNESDAY,
NOVEMBER 8TH**



Join us!
EWI Holiday Party

The Wichita Marriott

December 6th, 2023

5:30 - 7:30 PM

Please bring a wrapped set of socks
for a fun exchange!

RSVP by November 29th

<https://www.squadup.com/events/ewi-of-wichita---december-meeting>

Future Meeting Dates

- ◆ November Chapter Meeting: 5:30pm at Board & Brush Creative Studio, 1108 E. Douglas
- ◆ December Board Meeting: December 5, 2023, 3:00pm at IMA
- ◆ December Chapter Meeting: December 6, 2023, 5:30pm at The Wichita Marriott, 9100 Corporate Hills

You can view all of our upcoming meeting dates on our website via the [Chapter Calendar](#)

Follow us on social media!

Facebook: EWI of Wichita

Instagram: @ewiofwichita



NOVEMBER BIRTHDAYS!

November 5, Sara Jantz, Sedgwick County Zoo

November 9, Lori Armstrong, Derby Plaza Theatres

November 13, Helen Nicoli, Alumni

November 13, Tammy Voth, Textron Aviation

November 14, Jamie Hunt, Alumni

November 15, Teresa Arthur, Commerce Bank

November 20, Darna Gould, HealthCore Clinic, Inc.

November 27, Stacy Newton, Textron Aviation

November 28, Emma Hahn, Stoutheart Financial Group

Contact us!

Below you'll find information to contact your
2023-2024 Board of Directors as well as
Corporate EWI

Ashley Goodman—President & Programs Co-Chair | ashley.goodman@imacorp.com | 316.252.5425

Jessica Buettgenbach—Vice President | jbuettgenbach@visitwichita.com | 316.660.6331

Bonnie Simmons—Secretary & Sergeant-at-Arms | bonnie@greaterwichtapartnership.org | 316.500.6650

Emma Hahn—Treasurer | emma.hahn@ampf.com | 316.630.8118, Ext 203

Leesa Griffin—Programs & Treasurer Apprentice | lgriffin@berrycompaniesinc.com | 316.259.1131

Kristina Helm—Fundraising | kristina@westernassociates.com | 316.712.3053

Sydney Tuttle—Membership | stuttle@deltadeltatalks.com | 316.462.3353

Pam Dinwiddie—Membership Co-Chair | pdinwiddie@e-aviation.com | 316.517.4500

Tammy Voth—Communications Director | tvoth@txtav.com | 316.517.7097

Allison Walden—Director at Large & Advisor | waldena@dlwichita.com | 316.682.4553

EWI Corporate Office

ewiconnect.com

ewi@ewiconnect.com

262.269.5625