

Jessica Buettgenbach

From: Jessica Buettgenbach EWI President <postmaster@mg.ewiwichita.org>
Sent: Wednesday, September 18, 2024 10:31 AM
To: Jessica Buettgenbach
Subject: 2024 Connect EWI Wichita Newsletter
Attachments: 2024-2025_EWI_Wichita_Budget.pdf; EWI_Reading_Rally_Flyer.pdf

Caution: External (postmaster@mg.ewiwichita.org)



Graymail [Details](#)

[Report This Email](#) [FAQ](#) [Protection by High Touch Technologies](#)



Connect | October 2014



Happy September EWI!

I hope everyone had a great summer and is looking forward to fall. I am excited to start my journey as President with you over the next months. I am focusing on membership and programs this year and wanted to let you all know there will be some changes. We will be changing the date and times to hopefully better serve all members. This year we will be including breakfast and lunch meetings to the rotation as I know evenings can get busy with sports, school functions, work commitments, and life. I will be keep a close eye on attendance to see if we need to pivot along the way. I am also excited to bring some new professional development opportunities this next year. If there is a certain topic you have been wanting to learn about, please let me know. I am always open to suggestions.

2024-2025 President

Jessica Buettgenbach

Visit Wichita

2024-2025 President

Jessica Buettgenbach

I was very honored to serve with our last board. They did an amazing job despite the challenges and set backs we saw this year with some early board departures. I would just like each of them to know that we appreciate their time, efforts, and talent over the past year and I hope some of them enjoy their time off from the board.

A little bit about me if you don't know....

Jessica Buettgenbach, President: I have been with EWI since 2022 but my firm has been a long time member. I have served as secretary (2022-2023), President-Elect (2023-2024). I work with Visit Wichita and I am the Sports Event Manager. If you are unsure what Visit Wichita does, we are the destination marketing organization/convention & visitors bureau for Wichita, KS. In other terms, we market Wichita to grow the travel and tourism economy. Our vision is to elevate Wichita as a must-experience Midwest destination. We produce Visitor Guides for use by locals and travelers. We partner with local businesses to help show visitors or locals what there is to see and do in the city. Finally, we have a sports and sales team that attends tradeshows/conferences to meet with meeting planners/sports organizers to sell Wichita as the next location they should have their tournament, conference, etc. My job in all this is to once we win those bids to host sporting events. I am a liaison for the

Inside this Connect

- President's Message
- Director Messages
- Membership Update
- Meeting Recap
- Future Meeting/Event Dates
- August/September Birthdays
- Contact Information

city and sports organizer. I help them find printers, volunteers, operations staff, aid in marketing efforts. I also help them plan the events by organizing athlete experiences, welcome bags, city tours/experiences. I have been at Visit Wichita for 10 years and enjoy what I do on a daily basis. There is no day that is the same. One day you're placing sandbags on soccer fields and other days we are taking pictures of Chewy the sloth that comes by the office. You never know what your day will bring. In addition to work, I love KU basketball, football, volleyball; WSU volleyball. I have two kiddos. Payton, 8 (daughter) and Camden, 6 (son) who attend Wichita Collegiate. They are in 3rd grade and Kindergarten and both involved in soccer teams. My husband of 12 years works as greenhouse manager at Johnson Garden Center and we are high school sweethearts.

Now to introduce the rest of our 2024-2025 board:

President-Elect: Emma Hahn, Stoutheart Financial

Secretary/Sergeant-At-Arms: Kathya Hernandez, Healthcore Clinic

Treasurer/Director-at-large: Randi Gooding, Commerce Bank

Programs: Jessica Buettgenbach, Visit Wichita

Fundraising: Hayley Hobbs, Butler Community College Foundation

Communications: Mia Lee, Lee Media Group

Membership: Jessica Emerick Davis, Wichita Marriott

Advisor: Ashley Goodman, IMA Financial Group

Please feel free to reach out to any of us throughout the year if you need anything. Also, please pay attention to save-the-date for Reading Rally and October Meeting. We are in need of two more sponsors for Reading Rally for pizza and books.

Sincerely,

Jessica Buettgenbach

EWI Wichita President



Director Messages

Treasurer's Report

Emma Hahn, Treasurer

Stoutheart Financial Group

Commerce Operating Account:

08/01/24 Opening Balance: \$18,239.14

08/31/24 Reconciled Balance: \$14,058.69

Deposits:

1. Executive Night Dues: \$60.00
2. Regular Meeting Dues: \$354.42
3. Annual Firm Chapter Dues: \$345.50

Expenses:

1. Executive Night Expense: \$1,790.42
 2. Software Fees: \$130.00
 3. Website Fees: \$19.95
 4. Transfer to BCDP Account: \$3,000.00
-

Commerce BCDP Account:

08/01/24 Opening Balance: \$638.71

08/31/24 Reconciled Balance: \$638.71

Deposits:

1. Transfer from Operating Account: \$3,000

Expenses:

1. EWISP Scholarship: \$1,000
 2. ASIST Scholarship: \$1,000
-

Meritrust Savings Account:

08/01/24 Opening Balance: \$23,698.12

08/31/24 Reconciled Balance: \$23,699.12

Deposits:

1. Interest: \$1.00

Expenses: N/A

Ameriprise BCDP Account (Korol Financial):

08/01/2024 Starting Value: \$78,393.07



Please send payment to:

Emma Hahn

Stoutheart Financial Group

8621 E. 21st St. N., Suite 13

Wichita, KS, 67206

MEMBERSHIP UPDATE



Carlotta Gentry and Bonnie Simmons have yet to be announced at a membership meeting, so look for that happening really soon!



Kathya Hernandez is a 2nd representative for HealthCore Clinic, Inc. If you see her at a future meeting, be sure and introduce yourself! I enjoyed dinner with her at Executive's Night. She is lovely! I can't wait for you to meet her!

Bringing someone to an EWI meeting is an easy way to showcase EWI and maybe gain a new firm and representative. I'm sure you know of at least one person that could really use EWI to grow their career and broaden their connections.

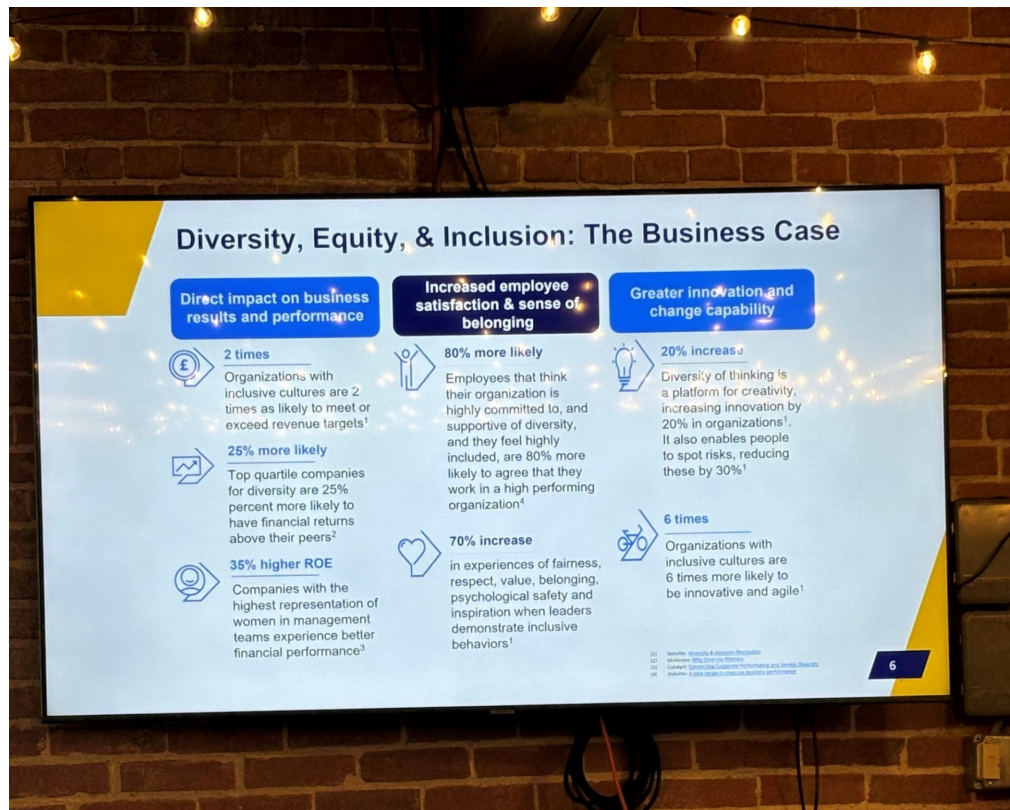
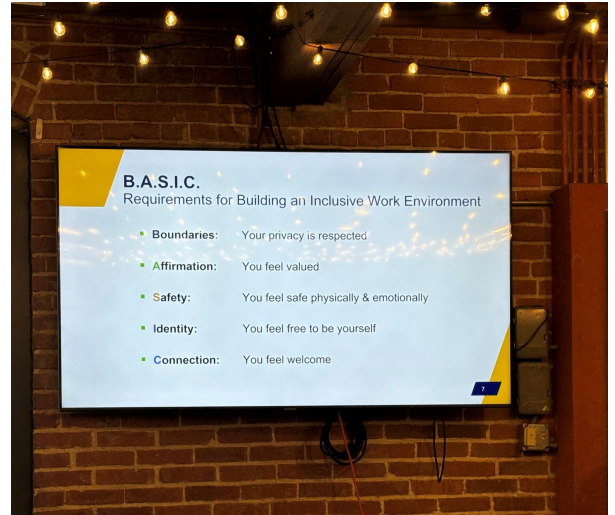
EWI is a great opportunity for someone to develop business relationships and valuable community connections, to grow personally and professionally, to develop leadership experiences, to have a forum to share ideas and promote your firm, and to participate in philanthropic initiatives that make a big difference in the lives of many people in our city.

I am inviting some potential members to future meetings, come see if you know them and help to promote our chapter! If you aren't comfortable recruiting someone, just send me your prospect names and I will take it from there.

Jessica Emrick Davies | jessica.emrick@wichitamariott.com | 316-462-3164

MEETING RECAP

- Held on Wednesday, August 21, 2024
- Informed everyone of open board decisions
- Had two speakers. Amy Williams and Alicia Sanchez spoke on Diversity Equity and Inclusion and how we can better incorporate some basic skills and ideas into our daily working routines and lives.



- August/September Board Meeting Recap

- Held on August 7 and September 4
- August Discussion:
 - Nominating Committee for board gathering
 - Reviewed DEI speakers for August meeting
 - Resend out straw ballots
 - Reviewed 2024-2025 budget
 - 10 representatives and 1 guest registered for August meeting. Jessica will send reminder
- September Meeting
 - Discussed Reading Rally
 - Reviewed 2024-2025 budget and voted to pass. Now will vote with membership
 - Discussed items for LCAM basket
 - Discussed voting for LCAM
 - Discussed September and Jessica working on flyer. Emma working on food.
 - Jessica sending out email to vote electronically about LCAM Vote and get RSVP sent out for September meeting
 - Discussed the finding that corporate had with suspended or not renewed members. Jessica E. and Pam Frank have updated the roster. Jessica E. will start sending out renewal notices. Need to make membership aware of email coming from corporate for dues and to check spam or ask Jessica E. when your renewal date will be.

■

SAVE THE DATE

Future Meeting Dates:

Board Meetings:

- October 9, 2024 - Visit Wichita

Chapter Meetings:

- October 23, 2024 at 5:30-7:30pm - Advanced Learning Library

Other Events:

- Reading Rally, October 25, 2024 - Colvin Elementary

All events can be found at ewiwichita.org



Upcoming Birthdays

September 2 - Shana Warkentine, City of Wichita

September 3 - Mia Lee, Lee Media Group

September 3 - Richelle Knotts, ReeceNichols South Central Kansas

September 5 - Ann Brady, Alumni/LM

September 16 - De Nelson, Alumni/LM

Belated Birthday

August 8 - Candace Perry, Alumni/LM

August 23 - Denise Wickham, Alumni/LM

Follow Us on Social Media

Facebook: [EWI of Wichita](#)

Instagram: [@ewiofwichita](#)

LinkedIn: [Executive Women International Wichita Chapter \(EWI\)](#)

Contact us!

Below you'll find information to contact your 2024-2025 Board of Directors

Jessica Buettgenbach — President & Programs Chair | jbuetgenbach@visitwichita.com | 316.660.6331

Emma Hahn — Vice President | emma.hahn@ampf.com | 316.630.8118, Ext 203

Kathya Hernandez — Secretary & Sergeant-at-Arms | khernandez@healthcoreclinic.org | 316.719.4526

Randi Gooding — Treasurer & Director at Large | randi.gooding@commercebank.com | 316.261.4866

Hayley Hobbs — Fundraising | hhobbs@butlercc.edu | 316.323.6734

Jessica Emrick-Davies — Membership Director | jessica.emrick@wichitamariott.com | 316.462.3164

Mia Lee — Communications Director | mia@leemediagroup.com | 316.239.6466

Ashley Goodman— Advisor | ashley.goodman@imacorp.com | 316.252.5425

EWI Corporate Office

ewiconnect.com

ewi@ewiconnect.com

262.269.5625

[Executive Women International - Wichita Chapter](#) | [Unsubscribe](#) | [Privacy Policy](#)

430 E Douglas Suite 400 Wichita, KS 67220