

# Wichita EWI Connect



**2023-2024 President**  
**Ashley Goodman**  
**IMA Financial Group**

## Inside this Connect

Page 1: President's Message

Page 2: Treasurer's Report /  
Director Message

Page 3: Chapter & Board Meeting  
Recap

Page 4: March to Membership  
Meeting

Page 5—6 Membership Corner  
Comments

Page 7: LCAM / Future Meeting  
Dates

Pages 8—11: April Firesides

Page 12: March Birthdays

Page 13: Contact Information

Happy March EWI!

We have an exciting announcement! In April we will be transitioning from our current website to the StarChapter website and administrative system!! We will be holding a Teams meeting in April to provide you information on the platform and give you time to ask questions. This session will be recorded for anyone who is unable to attend. The Board and I are very excited about this transition and feel it will streamline the Board's tasks as well as provide you all with a seamless experience.

I am also excited about our upcoming April Firesides! Allison Walden with Downing & Lahey Mortuaries, Jessica Buettgenbach with Visit Wichita, Jessica Emrick with Wichita Marriot, and Kris Helm with Western Associates are hosting firesides throughout the month of April. This year, you have the choice to attend all four sessions as it works with your schedule and as space is available! Please remember that firesides are a fundraising meeting, so the meeting fee applies regardless of how many or how little sessions you attend to support our philanthropic initiatives! (Only one meeting fee will be applied). In May, we will be holding a Women's Leadership Panel at IMA with executives from IMA Financial Group, Berry Companies, and Stoutheart Financial Group! This will be held on May 8<sup>th</sup> rather than the 22<sup>nd</sup>. We will also be pushing information out for our Fundraising meeting in June very soon! I am so excited about our upcoming events and hope to see you all there!

I wanted to remind you all, if you ever need anything please reach out to the Board. We care about your experience with EWI as well as your wellbeing and we are here for you! *"Anything is possible when you have the right people there to support you"* – Misty Copeland. Thank you for all you do and all your continued support.

Thank you!

A handwritten signature in cursive script that reads "Ashley Goodman".

**Ashley**

# Director Messages

Treasurer's Report  
Emma Hahn, Treasurer  
Stoutheart Financial Group

**Commerce Operating Account:**

02/01/24 Opening Balance: \$15,345.93  
02/29/24 Reconciled Balance: \$15,609.19

**Deposits:**

1. Annual Firm Chapter Dues: \$515.00

**Expenses:**

1. Website Fees: \$131.74
2. Software Fees: \$120.00
3. Chapter Dues Reimbursement for Overcharge: \$30.00

---

**Commerce BCDP Account:**

02/01/24 Opening Balance: \$638.71  
02/29/24 Reconciled Balance: \$638.71

**Deposits:**

1. N/A

**Expenses:**

2. N/A

---

**Meritrust Savings Account:**

02/01/24 Opening Balance: \$23,692.24  
02/29/24 Reconciled Balance: \$23,693.18

**Deposits:**

1. Interest: \$0.94

**Expenses:** N/A

---

**Ameriprise BCDP Account (Korol Financial):**

*(Statement not yet available for February)*



Please send payments to:

Emma Hahn

Stoutheart Financial Group

8621 E. 21<sup>st</sup> St. N., Suite 130

Wichita, KS 67206



Happy (almost) Spring, everyone!

I hope you have been able to enjoy this fabulous weather we have been having. I am super excited for our March meeting as it will be a fun one at Tanganyika Wildlife Park. Don't miss your opportunity with a furry creature!!! Also, don't forget to join one or all of the April fireside. Visit Wichita is hosting a fireside on April 24 at 3pm. I hope to see many of you there!

*Jessica Buettgenbach, Vice President/President Elect,  
Visit Wichita*

# MEETING RECAP

## February 2024 Chapter Meeting



- ◆ Held at the Wichita Marriott on Wednesday, February 21, 2024
- ◆ Business 2 Business Speed Dating event where we were able to introduce each other to our member firms.

# MEETING RECAP

## March 2024 Board Meeting

- ◆ Held at IMA Financial Group on Wednesday, March 13, 2024
  - ◆ Previewed the StarChapter website design and content
  - ◆ April Firesides being offered at 4 different member firms
- ◆ Discussed chapter meeting programs for July through September

# SAVE THE DATE

## March to Membership Meeting!!

Date: Wednesday, March 20<sup>th</sup>

Time: 5:30pm-7:30pm

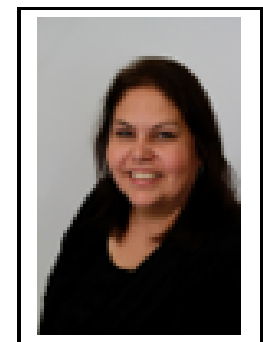
Where: Tanganyika Wildlife Park-Manyara Room

1000 S Hawkins Ln, Goddard, KS 67052

Now is your chance to bring someone to the March Meeting to promote membership and learn more about EWI!

Bringing someone to an EWI meeting is an easy way to showcase EWI and maybe gain a new firm and representative. I'm sure you know of at least one person that could really use EWI to grow their career and broaden their connections. This is such a great organization that does great things, and we need to tout it!

EWI is a great opportunity for someone to develop business relationships and valuable community connections, to grow personally and professionally, to develop leadership experiences, to have a forum to share ideas and promote your firm, and to participate in philanthropic initiatives that make a big difference in the lives of many people in our city. Several of the prospects we are working on right now have been a referral from an EWI rep that just happened to bring up the subject of EWI in their normal interactions and found there was interest. I am inviting a lot of potential members, come see if you know them and help to promote our chapter! If you aren't comfortable recruiting someone, just send me your prospect names and I will take it from there.



In order for our chapter to SURVIVE and THRIVE, Everyone has to promote EWI! See you in March!

Jessica Emrick Davies - [jessica.emrick@wichitamariott.com](mailto:jessica.emrick@wichitamariott.com) or 316-462-3164

**Members ~ Please take an opportunity to share this information with potential member firms!**

Do you like to have fun? *So do we!* Do you like to make a difference? *So do we!* Are you looking for a fun networking group where you can make a difference? If you answered yes, then we are looking for **YOU!**

Join us on **March 20<sup>th</sup> at  
Tanganyika Wildlife Park at 5:30pm.**

This will be an overview of the Wichita Chapter of Executive Women International and what our membership offers you! We focus on the three C's: Careers, Community and Communications. We always meet on the third Wednesday of the month. We would love for you to come to this meeting to see if this is a good fit for you or a representative in your firm.

~

### **Firm Exposure**

Member firm's products and services are promoted and showcased through professional networking at monthly Chapter Meetings and other engagements.

### **Professional Development Opportunities**

Corporate-hosted professional development webinars and local Chapter Membership Meetings with speakers held each month. Annual Leadership Conference & Annual Meeting (LCAM) held annually.

### **Community Involvement**

EWI of Wichita supports the community through various local philanthropic initiatives. A Reading Rally for elementary students and scholarships provided to high school students and adults.

***More information in the attached invitation!***

RSVP: [Jessica.emrick@wichitamarriott.com](mailto:Jessica.emrick@wichitamarriott.com) by **Friday, March 15<sup>th</sup>!**

**SAVE THE DATE**

Membership Corner Comments

**Members ~ Please take an opportunity to share this information with potential member firms!**



**YOU'RE INVITED!**

*Join us to learn more about  
Executive Women International of Wichita!*

**Wednesday, March 20th, 2024  
5:30pm - 7:30pm**

**Tanganyika Wildlife  
Park-Manyara Room**

**1000 S. Hawkins Ln, Goddard KS**



Guest Speaker Mia Lee, Owner of Lee Media  
Integrated Marketing - Seamless Strategies for Success.

A **Tanganyika Ambassador** will be available during the social for **Interaction and Photos!**

Complimentary refreshments provided!

RSVP [to Jessica.emrick@wichitamariott.com](mailto:Jessica.emrick@wichitamariott.com) by Friday, March 15<sup>th</sup>!

# SAVE THE DATE

## LEADERSHIP CONFERENCE & ANNUAL MEETING

September 18-21, 2024

## TUCSON, AZ

Casino Del Sol, Tucson, AZ



## Future Meeting Dates

- ◆ March Chapter Meeting—March 20, 5:30-7:30pm, Tanganyika Wildlife Park (Manyara Room)
- ◆ April Board Meeting—April 3 at IMA Financial Group
- ◆ April Fireside Gatherings—See flyers in this Connect!
- ◆ May Board Meeting—May 1 at IMA Financial Group
- ◆ May 8 Chapter Meeting—Women’s Leadership Panel at IMA
- ◆ June Board Meeting—June 5 at IMA Financial Group
- ◆ June 19 Chapter Meeting—Fundraising at Chicken N Pickle
- ◆ July Board Meeting—July 3 at IMA Financial Group
- ◆ July 17 Chapter Meeting—Executive Night at Wichita

# SAVE THE DATE ~ APRIL FIRESIDES

Join Us...

**WESTERN ASSOCIATES INC.**  
BRANDING SPECIALISTS  
WESTERNASSOCIATES.COM

## APRIL FIRESIDE

WITH KRISTINA HELM - WESTERN ASSOCIATES

To Go Behind The Scenes & Learn All Things Promotional Products & Branded Apparel!

**You Won't Want To Miss It!!** | **FRIDAY - April 12**  
**2:30pm**

LOCATION: Western Associates • 124 E. Main • Marion, KS 66861

[kristina@westernassociates.com](mailto:kristina@westernassociates.com)  
316-712-3053

*Just a few of our popular brands*



**BIC** | **Columbia** Sportswear Company | **SWISS ARMY** | **cotopaxi** | **Titleist**  
**Garhartt.** | **Sharpie** | **PAPER MATE** | **OGIO** | **CUTTER & BUCK**  
**HIGH SIERRA** | **THE NORTH FACE** | **Nike** | **Callaway GOLF** | **Post-it** | **THERMOS.**

<https://www.squadup.com/events/ewi-of-wichita---april-western-associates-afternoon-fireside>

SAVE THE DATE ~ APRIL FIRESIDES



*Let's do breakfast*

EWI FIRESIDE

HOSTED BY:  
Allison Walden  
Downing & Lahey Mortuaries

Wednesday, April 17, 2024  
7:30 - 9:00 am

Downing & Lahey East Mortuary  
6555 E. Central Ave.  
Wichita, KS 67206

<https://www.squadup.com/events/ewi-of-wichita---april-downing--lahey-breakfast-fireside>

# SAVE THE DATE ~ APRIL FIRESIDES



## **EWI Fireside** **Wednesday, April 24 at 3 p.m.**

Visit Wichita is excited to host members of the Executive Women International for an afternoon Fireside. Come enjoy some light snacks while you learn about travel and tourism in Wichita.

### **Location**

**515 S. Main, Ste 115**

*\*Off Main and Kellogg, next to  
Fairfield Inn & Suites Downtown*

### **Questions?**

Contact Jessica Buettgenbach at  
[jbuettgenbach@visitwichita.com](mailto:jbuettgenbach@visitwichita.com)

<https://www.squadup.com/events/ewi-of-wichita---april-visit-wichita-afternoon-fireside>

**SAVE THE DATE ~ APRIL FIRESIDES**



# **EWI FIRESIDE LUNCH**

You are invited to the  
Wichita Marriott Fireside Luncheon  
on Friday, April 26, 2024!

Meet us in the Fireside Grille at 11:30am!  
Wichita Marriott  
9100 Corporate Hills Drive  
Wichita, Kansas 67207

## **Greek Salad with Grilled Chicken**

**Herb Grilled Chicken with Spinach and Romaine, Kalamata Olives,  
Roma Tomatoes, Pickled Red Onion, Chopped Cucumbers, Goat Cheese,  
and Basil Balsamic Vinaigrette**

**Rolls, Butter, Tea and Coffee**

**Tira Misu Dessert**

<https://www.squadup.com/events/ewi-of-wichita---april-wichita-marriott-lunch-fireside>



## MARCH BIRTHDAYS!

- March 2—Leesa Griffin, Berry Companies, Inc  
March 5—Dawn Truman, ReeceNichols South Central Kansas  
March 7—Annie Murach, United Way of the Plains, Inc.  
March 11—Charlene Dreiling, Alumni Member  
March 18—Sharon Thomas, Alumni Member  
March 25—Jan Baggett, Alumni Member  
March 31—Pat Campbell, Alumni Member



**Follow us on social media!**

**Facebook: EWI of Wichita**

**Instagram: @ewiofwichita**

**LinkedIn: Executive Women International Wichita  
Chapter (EWI)**

## Contact us!

Below you'll find information to contact your  
2023-2024 Board of Directors as well as  
Corporate EWI

Ashley Goodman—President & Programs Co-Chair | [ashley.goodman@imacorp.com](mailto:ashley.goodman@imacorp.com) | 316.252.5425

Jessica Buettgenbach—Vice President | [jbuettgenbach@visitwichita.com](mailto:jbuettgenbach@visitwichita.com) | 316.660.6331

Pam Dinwiddie—Secretary & Sergeant-at-Arms | [pdinwiddie@e-aviation.com](mailto:pdinwiddie@e-aviation.com) | 316.517.4500

Emma Hahn—Treasurer | [emma.hahn@ampf.com](mailto:emma.hahn@ampf.com) | 316.630.8118, Ext 203

Leesa Griffin—Programs & Treasurer Apprentice | [lgriffin@berrycompaniesinc.com](mailto:lgriffin@berrycompaniesinc.com) | 316.259.1131

Kristina Helm—Fundraising | [kristina@westernassociates.com](mailto:kristina@westernassociates.com) | 316.712.3053

Sydney Tuttle—Membership | [stuttle@deltadeltatalks.com](mailto:stuttle@deltadeltatalks.com) | 316.462.3353

Jessica Emrick-Davies—Membership Director | [jessica.emrick@wichitamariott.com](mailto:jessica.emrick@wichitamariott.com) | 316.462.3164

Tammy Voth—Communications Director | [tvoth@txtav.com](mailto:tvoth@txtav.com) | 316.517.7097

Allison Walden—Director at Large & Advisor | [waldena@dlwichita.com](mailto:waldena@dlwichita.com) | 316.682.4553

### EWI Corporate Office

[ewiconnect.com](http://ewiconnect.com)

[ewi@ewiconnect.com](mailto:ewi@ewiconnect.com)

262.269.5625