

A Message from the President



As we begin the last half of my year as president, I have so much to be thankful for – and much to look forward to.

I am thankful for my membership in EWI. As a business executive, not only am I better for the exposure to our diverse member firms, but I learn things every day from the experience, educational aptitude and diversity of the representatives. I salute other member firms not only for their wisdom in maintaining their membership in EWI, but for promoting key individuals who fulfill so many roles within their firms – executive, administrative assistant,

sales professional, HR professional, or accountant. I challenge firms to consider a second or even third representative that will add additional demographic diversity and expose more of their staff to the talent of EWI. Remember that both corporate and local dues are greatly reduced for additional reps. EWI has something to offer everyone who chooses to engage.

I am thankful to the many representatives who have generously volunteered to help lead the chapter next year. I know that the work is underway to complete the slate of officers.

I am thankful for the executives and representatives that serve on this year's leadership board and on the many committees of EWI Wichita. Without a doubt, they are committed to excellence in delivering on the promises evoked in our mission: "EWI brings together key individuals from diverse businesses for the purpose of promoting member firms, enhancing personal and professional development, and encouraging community involvement."

May's MK Mueller professional development event is a great example of focus on the mission. Special thanks are due to those who have agreed to help underwrite the event; those who have gone above and beyond to help produce the marketing and branding materials; those who worked tirelessly to promote the event; and especially all of those who will come together to represent the EWI Wichita chapter at the May 21st event. This is our moment to proudly display the values of EWI – integrity, excellence, respect and collaboration.

2013-2014 Officers & Directors

President

Jenny Stephens
Star Lumber & Supply Company, Inc.

Vice President

Kim Weprin
Associated Integrated Marketing, Inc.

Secretary

Davna Gould
Center for Health & Wellness

Treasurer

Charlene Dreiling
Allen, Gibbs & Houlik, LC

Fundraising

Jessica Emrick
Wichita Marriott

Membership Director

Dawn Truman
J.P. Weigand & Sons, Inc.

Sergeant-at-Arms

De Nelson
City of Wichita

Program Director

Tami Barker
The Hyatt Regency, Wichita

Director At Large (Foundation)

Pat Campbell
Wichita State University

Communications Director

Debbie Pfingsten
Meritrust Credit Union

Advisor

Theresa Hogan
Stoutheart Financial Group

A Message from the President (cont.)

I am proud of EWI Wichita, and look forward to sharing EWI with our greater community. Please help welcome all non EWI attendees to the May event by remembering the mission of EWI and the priorities of EWI that are our tagline– CONNECTIONS-CAREERS-COMMUNITY!

Thanks for helping to grow EWI Wichita into one of the premier chapters in the US. Our growth, focus, and success are envied by many chapters. Let's keep it up.



Executive Advisory Board

As we began this current year focused on updating and renovating EWI - Wichita, many of the changes were developed at the directives enumerated in the EWI Standards of Excellence. As part of this process, we are actively seeking Executives who may be willing to serve on the EWI Wichita - Executive Advisory Council.

EWI recognizes the importance of firm executives in the ongoing success of its chapters. This board is to provide advice and recommendation to the Chapter Board of Directors in the areas of leadership, chapter growth, community outreach, fiscal responsibility, and professional development.

The Executive Advisory Board is to be comprised of at least three member firm executives whose primary responsibilities are to:

- Provide advice on leadership best practices
- Support the chapter's philanthropic and educational efforts in the community
- Provide input on investment decisions for the EWI Wichita Scholarship Funds
- Be willing to reach out to peers to help promote EWI, recruit speakers, and grow membership
- Provide guidance and recommendations on chapter issues as requested by the board

I would anticipate attendance requirements at two EWI board meetings each year, so there would be necessary engagement. Other chapters have guidelines that call for terms of three years, and I would see us similarly engaged.

If you represent your firm as the executive/representative or have an executive who would like to be involved in this capacity, please call Jennifer Stephens, EWI 2013/2014 Chapter President, for particular information.

EWI Wichita Member Firm News

New Firm Name!

Congratulations to “Stoutheart Financial Group,” (formerly *The Practice of Richard Campbell*) on their new team name!

Richard Campbell, CFP®, CLU®, ChFC®, Private Wealth Advisor, is celebrating his 30th anniversary with Ameriprise Financial this May, and is also being recognized into the Ameriprise “Hall of Fame” this July.

To follow them on this exciting journey.....

“Like” their Facebook page:
(facebook.com/stoutheartfinancialgroup)
and visit their website:
(richardcampbelladvisor.com)



Make-A-Wish Foundation

EWI Wichita Member Firm Make-A-Wish Foundation held a ribbon-cutting ceremony on April 29, 2014 at their new location, 125 S. Washington. Congratulations!



EWI Wichita Calendar of Events At-A-Glance

Chapter Meetings:

May 21, 2014

MK Mueller Event

Location: Hyatt Regency

June 18, 2014

Women in Investing PD Seminar

Location: River City Brewery

July 23, 2014

Executive Night

Location: Hyatt Regency Wichita

Board Meetings:

Meetings begin at 11:00 a.m.

June 13, 2014

Location: Wichita State University

July 11, 2014

Location: Hyatt Regency Wichita

Community Outreach:

June 2, 2014

Numana

Location: Wichita Boathouse

Time: 6-8 p.m.

Member Firms...

Allen, Gibbs & Houlik, LC
 Associated Integrated Marketing, Inc.
 Berry Companies, Inc.
 Carolyn Sayre's Fine Jewelry
 Catholic Charities, Inc. – Diocese of Wichita
 Center for Health and Wellness
 Cessna Aircraft Company
 CNH Industrial
 Commerce Bank
 High Touch Technologies
 Hyatt Regency Wichita
 imageQUEST
 Integrated Facilities Group
 J.P. Weigand & Sons, Inc.
 Kansas Health Foundation
 Kansas Strong...The Kansas Oil & Gas Res. Fund
 Loft at 420
 Make-A-Wish Kansas
 Meritrust Credit Union
 Murfin Drilling Company, Inc.
 Ponca Products, Inc.
 Professional Engineering Consultants, PA
 Professional Mechanical Contractors, Inc.
 Right at Home
 Sasnak Management
 Schaefer Johnson Cox Frey Architecture
 Sedgwick County Zoo
 Spirit AeroSystems, Inc.
 Star Lumber & Supply, Inc.
 Stoutheart Financial Group – Ameriprise Financial
 Sunflower Travel
 TCK – The Trust Company of Kansas
 The Specialists Group
 Total Printing Solutions
 United Way of the Plains
 Wells Fargo Advisors
 Westar Energy, Inc.
 Wichita Children's Home
 Wichita Metro Chamber of Commerce
 Wichita Marriott
 Wichita State University
 Wichita State University Foundation
 Wichita, City of

43 Member Firms

43 Representatives

5 Additional Representatives

18 Life Members

Who We Are.....

Life Members...

Ann Brady
 Peggy DiStefano
 Donna Eastwood
 Gaile Garner
 Jean Hedstrom
 Deborah Hobbs
 Jamie Hunt
 Donna Jestmore
 Beverly Jones
 Susan Leasure
 Julia Lee
 Barbara Lisenby
 Marg McAdams
 Diana McLeod
 Marlane Morris
 Sandra Richardson
 Marilyn Richwine
 Vicky Sanders

May Birthdays...

Vicky Sanders	5/2
Tracy Lucas	5/4
Jeanetta Bolin	5/8
Lynne Smith	5/21



Thank You to Our EWI Wichita Sponsors!



CONNECTIONS | CAREERS | COMMUNITY

CONNECTIONS | CAREERS | COMMUNITY

Platinum Level Sponsors



Kimberly Weprin

Gold Level Sponsors



Silver Level Sponsors



Jennifer Stephens

Bronze Level Sponsors

Commerce Bank Schaefer Johnson Cox Frey Architecture
United Way of the Plains Wichita State University
The Salon at Happiness Plaza

EWI Wichita Professional Development

Professional Development Schedule – Watch For More Details!

- 05/21/14** **Monthly Meeting** – “Shift Happens” (MK Mueller) *(See flyer next page)*
Workshop – “Eight Practical and Powerful Steps to Success”
Beginning Times:
Breakfast Session: Registration/Breakfast: 7:30 a.m.; Program: 8:30 a.m.
Midday Session: 4 Hour Workshop: 10:00 a.m.
Location: Hyatt Regency
Note: Breakfast/morning meeting; will replace regular monthly meeting
- 6/18/14** **Monthly Meeting**
Investing Professional Development Seminar (Richard Campbell, Stoutheart Financial Group)
“Strong Women, Powerful Financial Strategies”
Location: River City Brewery, Loft at 150

Wild West Forum

The Wichita Chapter will once again participate in Wild West Forum, to be held June 27, 28 and 29th in Omaha, Nebraska. In attendance will be The Omaha, Colorado Springs, Denver, Kansas City, and Des Moines chapters. If you have interest in chapter leadership, this is a great way to meet leaders from several other chapters, discuss best practices, and exchange ideas. Please let Kim Weprin, Associated Integrated Marketing, know if you have interest in attending.

***“Did You Read the Connect?”
Contest will return in June***

Return on Investment – EWI

ROI Connections

Network your Business
Build Strong Relationships
Increase contacts locally & throughout North America
Sponsorship Opportunities
PR for your firm

ROI Careers

Monthly programs, chapter meetings, webinars
Spring Conference and LCAM
Academy of Leadership Modules
Hands on Learning
Board Experience
EWI Fellows Scholarship

ROI Community

Local Philanthropic efforts
Focus on Literacy
Local and National Scholarship Programs
Recognition locally and through Corporate Projects

EWI Wichita Representatives: Please plan to arrive at the Hyatt by 7:00 a.m. to greet our community guests and help with last minute details of the event. Thank you!

Wichita
ewi
CONNECTIONS | CAREERS | COMMUNITY
event
5.21.14



FEATURED PRESENTER
MK Mueller



Ms. Mueller is an international trainer and award-winning author, coaching more than 100,000 people each year – from clerical employees to executives. Some of Ms. Mueller's clients include Fortune 500 companies such as AT&T, Target, Sprint and Campbell's. To read more about Ms. Mueller, visit www.8togreat.com.

“MK's presentation to the EPA in Washington was powerful, practical, and phenomenal, as usual. Participants felt it was, by far, the most valuable three hours they had ever spent in a workshop.”

– Lucy Arenlin
EPA, Washington, D.C.

Executive Women International® (EWI®) of Wichita invites businessmen and women to attend two professional development seminars on Wednesday, May 21, 2014. Whether you choose to attend one or both of the seminars, MK Mueller is not to be missed.

Hyatt Regency Wichita • Wednesday, May 21, 2014

BREAKFAST SESSION:

“Shift Happens: Surviving and Thriving with Change”

1 hour • \$30/person

7:30 to 8:15 am Registration and Breakfast Buffet

8:30 am Program start time

MIDDAY SESSION:

“Eight Practical and Powerful Steps to Success”

4-hour workshop • \$45/person

10:00 am Workshop begins

12:00 to 12:30 pm Lunch

12:30 to 2:00 pm Workshop continues

**BEST
VALUE!**
Both sessions
\$69/person

To reserve your seat at one or both events, or for more information about this event and topics listed, please visit:

[http://www.ewiwichita.org/community-2/
community-professional-development/mkmuellerevent/](http://www.ewiwichita.org/community-2/community-professional-development/mkmuellerevent/)

To register/pay offline, please contact Charlene.Dreiling@aghlc.com

Hurry – space is limited!

EWI Corporate Professional Development

“Save the Date” for EWI Corporate Professional Development:

Webinar:
Kick the Fear out of your Finances
Julie L. Fleming, CFP
Tuesday, June 3 - 2:00pm CST



2014 LCAM
September 10-13, 2014
Crystal Gateway Marriott
Arlington, VA



EWI Corporate Professional Development Webinar Archives Available at: EWIConnect.com

Goal Setting the S.M.A.R.T. Way

Presenter: Dr. Heather Williamson

So Organized – So Successful

Presenter: Melissa Gratias

The No Rules Way: Business Strategies to Network Smarter, Not Harder

Presenter: Christy Smallwood

He Said, She Said: Communication Between Genders

Presenter: Susan Wranik

Personal Branding 101: How to Apply Basic Marketing Strategies to Enhance Your Career

Presenter: Dr. Doug Ross, Associate Dean, Global MBA

Executive Corner

Practicing Leadership - imageQUEST



Pat Summers
President

Firm joined in 2013

When asked the question....

What is a leadership practice that you do different from most people?

Mr. Summers responded:

I have a 3 prong approach to leadership. I believe the most important components of leadership are CULTURE, EXPECTATIONS, and FOLLOW UP. As a leader, you MUST first establish a culture of ENERGY, ENTHUSIASM, and WINNING. Once your culture is established, then you set the expectations for communication, behavior, and performance. When your culture is positive and the people in the organization understand the expectations...then the last part is follow up. Great Leadership requires a consistent process for measuring progress and inspecting performance. The follow up and inspection process is what people in an organization WANT and NEED. People want to know how well they are doing and what they need to improve upon.

About Pat Summers:

Pat Summers has served as President and CEO of imageQUEST since January 2014. Pat has a long history of success building sales organizations, being most notably recognized for his positive attitude and high energy level. Prior to his leadership with imageQUEST, he spent 24 years working for ComDoc, a GIS Company in Ohio. He served his last position at ComDoc as Regional President, making significant contributions to the business. Under his leadership, the Southern Region of ComDoc advanced from the ground up to a third of the corporation's revenues. Pat is a student of leadership and is an avid reader of leadership studies. Pat is a graduate of Ohio University in Athens, OH, holding a BS in Organizational Communications. He has served on the Board of Junior Achievement of Central Ohio, as well as volunteered for many years for the Arthritis Foundation.



About imageQUEST:

imageQUEST (iQ) specializes in office technology workflow assessment and optimization. We have been committed to our customers since 1995. We are uniquely positioned to help organizations understand true cost breakdown, asset deployment, usage patterns and volumes that result in the co-authored development of sustainable work practices and monitoring of workflows for continuous improvement. We have successfully led companies as well as small organizations - in every industry from healthcare to education - to achieve better financial results, improve operational efficiency and reduce environmental impact. iQ solutions incorporate products from Xerox, Dell, Hewlett-Packard, IBM, Microsoft, Equitrac, eCopy, Paper Cut, and other leading companies. We also offer a variety of service contracts, including maintenance, supply, network management, technical support, and training. imageQUEST currently operates within the state of Kansas and Missouri.

From Your EWI Wichita Board of Directors

Kim Weprin – Vice President/President Elect



It appears summer is officially here, at least in terms of the weather! And with summer comes talks of Wild West Forum & LCAM! We submitted our projected attendance numbers for June 27-29 Wild West Forum, and it appears lower attendance numbers

may drive the registration fee up a little bit. If you are still interested in attending please let me know ASAP. FINAL counts are due June 2, 2014. Currently registration is at \$80, but it may go up to \$100. The room cost is \$99/night. Please remember Omaha is working to make this as cost-effective as possible, so if you want to attend, please let me know soon.

LCAM 2014 Update:

Currently we have 6 people registered to attend. This year it will be in Arlington, VA and is from Sept. 10-13. You have through 5/31 to get registered for \$50 off. If you have any questions regarding LCAM, please feel free to reach out to me. I am keeping a list of everyone attending, so if you do register, please let me know. I hope to see everyone there!

Stay cool and see you all at the MK Mueller event on the 21st!

Davna Gould – Secretary



Minutes of the March 2014 board meeting were submitted for approval at the April 11, 2014 board meeting held at Wichita Marriott. The Minutes were approved. Minutes of the March Board meeting were submitted on May 5, 2014 to corporate and for posting on the chapter website.

Charlene Dreiling – Treasurer



The May Treasurer's report includes these pertinent figures:

Commerce Checking	\$8,098.34
Meritrust Savings	\$26,172.85
B/C/DP:	
Commerce Checking	\$3,920.39
TCK Trust	\$51,681.95
Total	\$89,873.53

De Nelson – Sergeant-At-Arms



The May Sergeant-At-Arms report includes these pertinent figures:

Active Member Firms (w/Reps)	43
(as of April 16, 2014)	
Active Representatives	48
(includes 5 Additional Reps)	
Life Members	18

March Meeting Attendance:

Reps	27
Additional Reps	5
Life Members	2
Executives	5
Guests	4
Total Attendees:	43

From Your EWI Wichita Board of Directors (cont.)

Tami Barker – Program Director



Thank you to the many, many individuals who have spent much time and energy in preparation for our MK Mueller Event on May 21st. I look forward to learning with my fellow EWI members as well as many of my hotel team members. I

encourage you to continue to share the information with your friends and co-workers to make this first event a huge success for the chapter.

Our June meeting will take us to the River City Brewery and a presentation by Richard Campbell of Stoutheart Financial Group entitled “Strong Women, Powerful Financial Strategies”. I know that I personally can benefit from this topic for both my personal and professional development.

July will be here before we know it when we will be sharing our scholarship winners with our Executives at Executive Night at the Hyatt Regency. Doesn't seem possible does it??

Pat Campbell – Director-At-Large (Foundation)



Greetings! The busy month of April found our scholarship applications starting out pretty slow. To the rescue came the Foundation Committee who divided up the contact list; each made a number of reminder calls to encourage participation. Thanks to all of their hard

work and time commitment, a good number of scholarship applications for the EWISP and ASIST scholarships have been received. The judges have been secured and all is well on its way to making an announcement at this year's Executive Night.

Thank you committee members: Sharon Thomas, Mona Kepley, Barb McCurdy, Joan Wamsley, Holly Bellora, Pam Fullinwider, Lisa Caps and Marcy Ray. You have been very committed to helping with anything and everything you have been asked to help with.

Thank you as well to this year's Fundraising Committee. They have done an awesome job raising funds to support Foundation projects.

We are looking forward to setting a date for the Reading Rally and will inform you as soon as possible about that. Please be thinking about what role you might be able to play in participating in the Reading Rally. Serving the children of Colvin Elementary in this capacity each year is an important part of the literacy project EWI Corporate encourages. If you haven't volunteered for this event, please consider doing so. It is a most heartwarming event.



CONNECTIONS | CAREERS | COMMUNITY

EWI Mission Statement

**Executive Women International (EWI)
brings together key individuals
from diverse businesses for the purpose of:
promoting member firms;
enhancing personal & professional development,
and encouraging community involvement.**

From Your EWI Wichita Board of Directors (cont.)

Jessica Emrick – Fund Raising Director



The EWI T-Shirt orders have been placed.

Thank you to everyone who attended and supported the April Fundraiser. It was too much fun! I hope Kim Weprin and her guests enjoyed the May 2nd WSU Baseball game in the President's Skybox. Congratulations on your win!

Our President, Jenny Stephens will be sending out a letter to all Executives describing the scholarships, and opportunities to help subsidize costs for May's Professional Development events. There will be various donation levels: Bronze, Silver, Gold and Platinum for those who are interested which will entail the detailed benefits of the various levels.

Tickets will be sold again at the May and June meetings for the 2nd Quarter fundraiser – A One Night Stay in the Rhode, Wilcox or 4D Lodge at one of the Flint Hills National Golf Club located in Andover, Kansas. These lodges are located on the east end of North America's largest golf practice facility. They have a great room with a full kitchen and a 42-inch plasma television and each lodge has its own private practice tee. The Rhode lodge has four bedrooms with two queen beds in each room. The Wilcox and 4D Lodges have four bedrooms with a king bed in each room. Whether it's a weekend getaway or entertaining business clients, the lavish Lodges at Flint Hills National let you stay right on the finest golf course in the Midwest.

If you are looking to Get Away without "Getting Away" this is the perfect option! It's great for Entertaining Business Clients, Celebrations, Family Gatherings or a Girls Night Out. Certain Date Restrictions Apply. To be redeemed during November or December of 2014. Lodges are decorated during the Holiday Season. Feel free to sell tickets at \$10/each or 5 for \$40 to your coworkers, family and friends. Need not be present to win. Packets of 10 can be checked out at meetings or individual tickets can be purchased.

A portion of the proceeds from May's Breakfast meeting will also benefit Fundraising!

Dawn Truman – Membership Director



PLEASE HELP US STRENGTHEN OUR CIRCLE!

We know the importance of growing and strengthening our chapter. We have three new firms that we will be announcing in the next 2 months. Thank you for all your recruiting efforts – they are paying off.

We are off to a good start but we still have some business categories that are not represented in our chapter. Please review the following suggestions and let me know if you have recommendations on contacts in these fields who we could target for membership.

Legal
Insurance
Automotive

Photography
Audio Visual
Florist

Thank you so much! Together we can reach our goal of 50 members by 2015.



4D Lodge



From Your EWI Wichita Board of Directors (cont.)

Debbie Pfingsten – Communications Director



We continue to become familiar with the benefits of social media and how it will spread the EWI word. Sponsorship dollars donated will, in turn, receive a designated number of social media mentions through Twitter and

Facebook as well as the website and other visible mentions. We are also keeping an eye on LinkedIn after the March chapter meeting at High Touch Technologies provided a much needed overview of its purpose and benefits. As we become more and more aware of the power of these social networks, we will continue to utilize them to our best advantage. Be sure to let anyone on the communications team know if you need to get the word out about an event, big change in your companies, etc. While networking is a great tool, social media is like networking on steroids. Let's use it! We are looking forward to the upcoming M.K. Mueller event and hope we see many community businesses take part in this inaugural EWI event. We are so excited to hear her speak and we sincerely hope you get to take advantage of at least one of the sessions on May 21st.

Board Report Recap

Treasurer's Report:

Commerce Checking	\$8,098.34
Meritrust Savings	\$26,172.85

B/C/DP:

Commerce Checking	\$3,920.39
TCK Trust	\$51,681.95

Total	\$89,873.53
--------------	--------------------

Sergeant-At-Arms Report:

There were 27 Representatives, 5 Additional Representatives, 2 Life Members, 5 Executives, and 4 Guests for a total of 43 present at the April 2014 Chapter meeting. With 30 member Firms represented, we had a 67% attendance record.

Membership Report:

Member Firms	43
Firm Representatives	43
Additional Representatives	5
Life Members	18
Total Membership	66



CONNECTIONS | CAREERS | COMMUNITY



@EWIWichita



facebook.com/EwiOfWichita



EWI – Wichita

EWI Wichita Chapter Community Outreach

Together We Can Make a Difference!

EWI Wichita Group Community Outreach Ticker

Chapter Dollars Invested:

Reading Rally – 10/1/13 \$3,429.03

Volunteer Hours Invested:*

Reading Rally – 10/1/13	105
Botanica Illuminations Event – 12/19/13	41
WCH Gift Wrapping Event – 12/23/13	14
United Way GIV Warehouse Event – 3/13/14	23
Ronald McDonald House Event – 4/3/14	15
Wichita Festivals – 4/21/14	21

Total Volunteer Hours as of 5/1/14 219

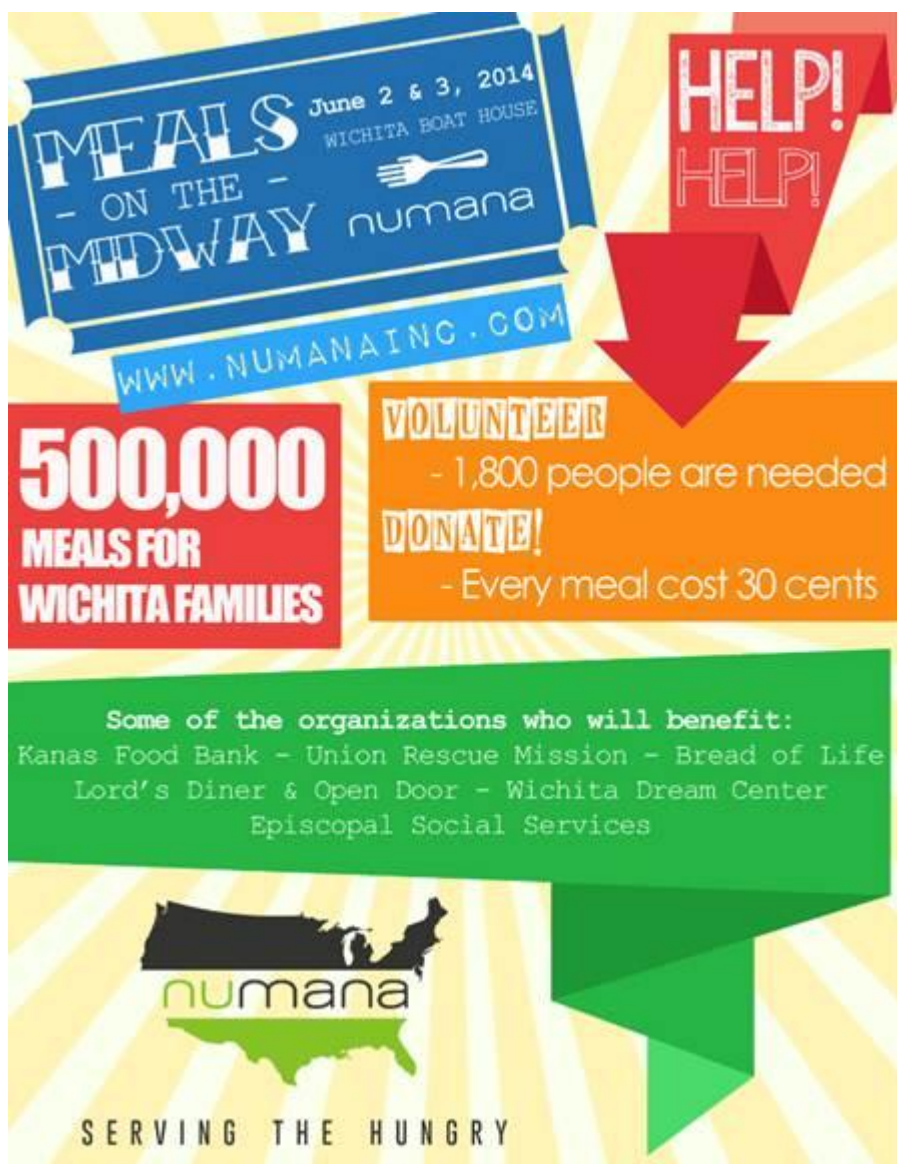
***EWI Wichita Group Volunteer Hours Annual Goal = 1,000**

June Group Community Outreach Opportunity

Numana

Date: Monday, June 2, 2014
Time: 6-8 p.m.
Agency: Numana
Address: Wichita Boathouse, 515 S. Wichita
Project: “Meals on the Midway” - Packing food for various organizations

***See event & registration information on next page
 Please invite your co-workers, family and friends to join in this event!***



You have two options to register:

1) Here is the link to register to participate on June 2:

https://www.kintera.org/faf/reg_new/registerPre.asp?ievent=1109708&lis=0&kntae1109708=9AB85EF7532849BBA0921E89D01E2141&teamAction=join&jt=5968875&teamreg=y

2) For more information on Numana Inc and register, please do the following:

- Go to www.numanainc.com
- Click on events
- The packaging event name is "Meals on the Midway"
- Click on register
- Look under Top Teams for Executive Women International
- Click on the team name
- You will see the team registration form, please complete and submit.

EWI Wichita Chapter Meeting – April 19, 2014 “Dollars for Scholars” & Beer/Wine Tasting Fund Raising Event



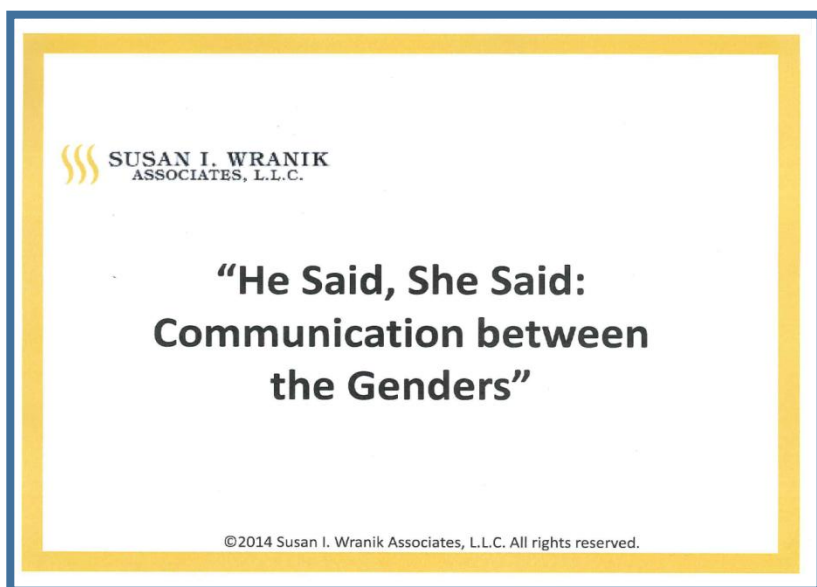
***Great Friends,
Food & Fun!
Thanks to Jessica
& the Fundraising
Committee for all
your hard work!***



***Beer & Wine
Tasting hosted by
Standard
Beverage***



“Wine & Web” Professional Development at Allen Gibbs & Houlik April 24, 2014



**Attending the
Wine & Web were:
Charlene Dreiling,
D’Ann Drennan,
Theresa Hogan,
Mona Kepley,
Angela Telford &
two guests from
Allen Gibbs & Houlik**

Wichita Festivals Community Outreach Event – April 21, 2014

**From left:
Martin & Donna Ayers
(Barbara Lisenby’s sister &
brother-in-law from Topeka),
Barbara Lisenby, Julie Roberts,
Mary Farrar, Jan Baggett
Kyle Stephens, Theresa Hogan
& Jenny Stephens**





EWI of Wichita appreciates the support of all of its firms who underwrite its many operational programs. Funds will be used for chapter operations and/or to help pay for marketing materials, provide speaker's logistical support and underwrite speaker fees for our Professional Development engagements.

Please Complete:

Donor Name _____

Address _____ City _____ State _____ Zip _____

Phone _____ Fax _____ Email _____

Contact Person _____ Title _____

Authorized Signature _____ Date _____

I am pleased to support EWI's ongoing operations by pledging support in the amount of:

Platinum \$1,000+

Recognition includes:

- Prominent executable logo link on EWI of Wichita website for 6 months
- 10 social media mentions over 3 month period
- Devoted page in presentations at chapter meetings for 3 months
- Devoted page in Executive Night presentation
- Prominent display in the EWI *CONNECT* newsletter for 3 months
- Recognition on tabletop displays at chapter meeting for 3 months
- Verbal recognition at next 3 monthly events

Gold \$750-\$999

Recognition includes:

- Prominent executable logo link on EWI of Wichita website for 6 months
- 5 social media mentions over 3 month period
- Prominent display in presentations at chapter meetings for 3 months
- Devoted page in Executive Night presentation
- Recognition in EWI *CONNECT* newsletter for 3 months
- Recognition on tabletop displays at chapter meeting for 3 months
- Verbal recognition at next 3 monthly events

Silver \$500-\$749

Recognition includes:

- Prominent executable logo link on EWI of Wichita website for 6 months
- 3 social media mentions through July 30
- Listing in presentations at chapter meetings for 3 months
- Recognition in EWI *CONNECT* newsletter for 3 months
- Recognition on tabletop displays at chapter meeting for 3 months
- Verbal recognition at next 3 monthly events

Bronze Level \$100-\$499

Recognition includes:

- Listing on EWI of Wichita website for 6 months
- Social media mention
- Listing in presentations at chapter meetings for 3 months
- Recognition in EWI *CONNECT* newsletter for 3 months
- Recognition on tabletop displays at chapter meeting for 3 months

Checks should be made payable to "EWI of Wichita"

Please mail completed donor form to:

Charlene Dreiling
2013/2014 Treasurer
AGH LLC
301 N Main Suite 1700
Wichita KS 67202