

ewi CONNECT

CORPORATE EDITION

ewiconnect.com

ISSUE: 2015-16/4

JANUARY 2016

Letter from President



Dianne Luckett
2015-2016 Corporate President
Irby Electrical Distributor

While a bit belated.....Happy New Year! I'm not going to even pretend to have any "resolutions"! I am, however, going to encourage each of us to set some realistic "Goals". Both personal and professional. Individually and as a Chapter. Collectively we have an amazing group of professionals with character and integrity and the desire to share our talents, strengths, and wisdom with others in our communities, while promoting the firms that continue to support our efforts.

Our largest renewal month, as many of you know, is at the end of the calendar year in December. Our Corporate Office staff, in spite of MemberPoint "glitches" with the software, has done a wonderful job assisting our Chapters with their renewals. We accept full responsibility for any EWI functions that should be handled in a timely and professional manner. However, when occurrences happen that we have no control over, we do the best we can to resolve the issues. The good news is that the renewals are coming in and I hope to have a full report for you in the coming weeks. I'm sending more and more "Welcome Letters" to new member firm representatives across the US and Canada. Now, THAT's exciting.

We are working on a resolution that will hopefully help this and many of our past and current frustrations with MemberPoint disappear. Please allow me the opportunity to report on this in our February CONNECT as I would rather "under promise and over deliver".....than vice versa. But we do have an amazing opportunity to have a much more user friendly database platform AND save \$\$\$\$! Stay tuned, more on that as we confirm these opportunities.

MEMBER ADVISOR PROGRAM

Our Member Advisor Program, chaired by Carolyn Feltus, EWI of Mobile, is off to a wonderful "re-start". Carolyn facilitated the January webinar and it was very well received. The Corporate Board is committed to continuing this program to assist our chapters in whatever way possible. Please respond to the MA representatives that may contact you for information that will assist us in ensuring the most up to date data for all of our chapters and assist you in retaining and growing our membership. If your chapter would prefer to not utilize the MA Advisors, that's fine, but please let either me or Carolyn know, so that we can respect your request.

BOARD ADVISORS UPDATE

I want to take this opportunity to thank each EWI Board Member for their commitment to this organization and let you know what they've been up to. I must

VIEW & DOWNLOAD LCAM PHOTOS

[View the gallery](#)

Gallery ID: EWITulsa2015

February Professional Development Webinar

WOE to WOW: Excelling Women in
Leadership and Helping them Find their
Why

February 2, 3:00 pm ET

ewiconnect.com/webinars

2015-2016 Officers & Directors

President

Dianne Luckett
Irby Electrical Distributor
EWI of Jackson

Vice President

Benita Collins
Dallas Area Rapid Transit
EWI of Dallas

Secretary/Treasurer

Jill Gaffney
Greenleaf Landscaping, Inc.
EWI of Spokane

Director

Cortney Ihde
ActionCOACH
EWI of Milwaukee

Director

Darlis Vauble
WoodmenLife
EWI of Omaha

Director

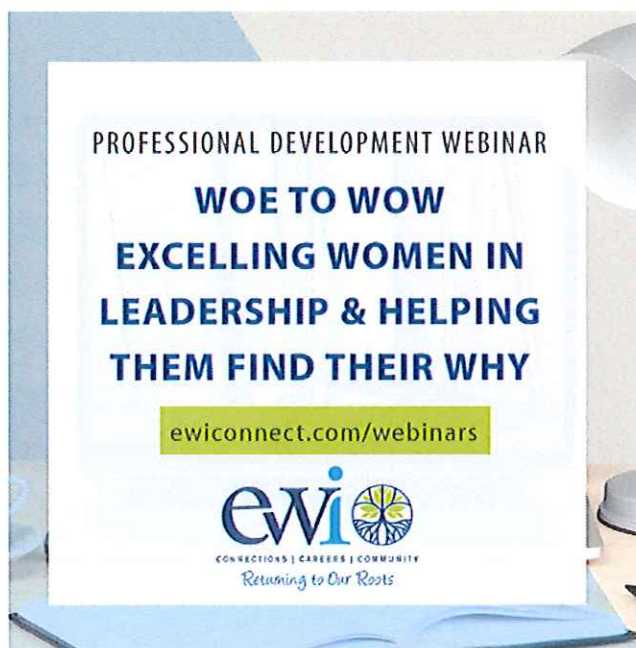
Cheryl Hawkins
American Clinical Laboratory Association
EWI of Washington DC

thank Darlene Banogon for her wisdom, experience and advice as the Board desires to make the best decisions possible for the growth and success of EWI. Darlis Vauble and her committees have provided amazing professional development webinars and are currently working on EWISP and ASIST scholarship opportunities as well as our new Chapter Grants. She's been a very busy lady on our behalf! Courtney Ihde is one young woman on FIRE! I'll be able to share more with you next month, but as I mentioned earlier in regards to MemberPoint, she has been instrumental in negotiations for a much better platform and has some amazing plans for a new, exciting and USER FRIENDLY website that you will love!! (did I mention saving EWI \$\$\$?) Her Social Media committees are ready to ROCK! Stay tuned! Cheryl Hawkins, one of the most sincere and committed individuals to EWI that I have ever known, is leading the charge with our Membership Advisor Program. She makes herself available to any who may need her assistance. Retention is one of the most important initiatives that we have and she is committed to its success. I must say that Jill Gaffney has been a Godsend to me personally and is such an asset to our organization as Secretary and Treasurer. Her expertise has been invaluable! Your President Elect, Benita Collins and her committees are working diligently to streamline our EWI Chartering process as well as developing a strategic focus on our Member-at-Large opportunities. She is committed to growing this organization!

CORPORATE OFFICE UPDATE

Another huge "Thank You" to our Corporate Office Staff. Both Kristine and Kristen continue to work diligently to ensure the best possible customer service that we can provide for each of you. If you send an email to either of them and they are unable to answer immediately, you may receive an auto reply to let you know your email has been received and that they will respond as soon as possible. In the world of cyberspace and in spite of all our technology, occasionally emails can get lost or even sent to a spam file.

I am personally excited about our February Professional Development Webinar



It's right up our alley! I hope as many of you as can, will join me on the webinar to help us turn our "Woe to Wow"! **Register today!**

LCAM 2016 UPDATE

The 2016 LCAM Committee is working diligently with the Spokane Chapter to ensure that you will experience one of the most exciting annual meetings that we have had in years. (And they've all been amazing!) We realize the challenge of the expense of attending the annual meeting and the travel constraints, but I can assure you that this will be well worth your commitment. Every effort is being made to reduce expenses and still provide each of you with the professional development you expect and deserve. As part of that, I am excited to share that we have an extra

Advisor
Darlene Banogon
North Island Credit Union
EWI of San Diego



JOIN THE CONVERSATION!



Corporate Office Serving EWI Membership

The Corporate Office deepens its commitment and level of service to EWI. We commit to a 24-hour turn-around in email responses and answering voice messages, unless the office is closed or the person you need to reach is out for the day.

Kristine Pepin
Office Manager

Kristen Harmston
Office Administrator

Bonny Steele
Webmaster

Office Hours: 9:00am-5:00pm MT
Email: ewi@ewiconnect.com
Phone: 801.355.2800
Address: 3860 S 2300 E, Ste 211
Salt Lake City, UT 84109

special treat returning to this LCAM as Lori Giovannoni (Dean of our Academy of Leadership) is designing a brand new, exclusive EWI AOL module and will introduce and facilitate it in September.

SCHOLARSHIPS

If you have not already done so, please email the Corporate Office staff ASAP to let them know who the EWISP and ASIST Chairs are in your chapter so that they can ensure that they receive all pertinent information in a timely manner.

CHAPTER GRANTS

The deadline for submission for a \$1,000 Chapter Grant is March 15, 2016. This will allow enough time to process the applications and have the grants delivered to your chapter for use in this calendar year. You can access the grant application [here](#)!

GREAT NEWS FROM VIRGINIA

Ready for some awesome news? I just received news that the Virginia Credit Union, a member firm of EWI of Richmond has just installed their 4th representative! How exciting! President Toni Bastian said, "The Virginia Credit Union has been a faithful firm with EWI of Richmond for more than 20 years." The President and CEO of the Virginia Credit Union, Jane Watkins, actually shared in the installation of their newest and 4th representative, Jennifer Parrish. Jane said "EWI has been an important part of Virginia Credit Union's leadership development for many years." Two of the VACU representatives have served as Richmond Chapter presidents. If your chapter has installed 4th reps for any of your firms, please let me know. This is the kind of news I LOVE to share with you. PROGRESS!

THANK YOU & HAPPY NEW YEAR

The Corporate Board and Office thank you for your continuing support and look forward to our successes in 2016. We're excited and optimistic about the journey ahead of us throughout this New Year and the new opportunities it will bring. Happy New Year!

IN MEMORIAM

It is with great sadness that the Birmingham Chapter Board informed us of the passing of Mrs. Jo DeMoll on Saturday, January 9, 2016. Jo was the 1966 EWI Birmingham Chapter President and served as Corporate President in 1974-1975. The Jo DeMoll Representative of the Year Award was established in 1988 to honor her outstanding dedication to EWI. "Jo was a force in EWI for many years. She loved the Birmingham Chapter and was dedicated to its success." - Glenda Burson

A memorial service will be held on Friday, January 15, 2016 at 2:00 p.m. at the Irondale United Methodist Church with Rev. Taylor Gallman officiating. In lieu of flowers, memorials may be made to the Irondale United Methodist Church, 400 Deering Street, Irondale, AL 35210.



Mary Jo Orr DeMoll

Sep. 13, 1926 - Jan. 9, 2016 Age 89, a lifelong resident of Birmingham, passed away January 9, 2016. Mary Jo worked at Birmingham Reality many years serving as Secretary and Treasurer. She retired as Executive Secretary to William Spencer. Active in civic organizations, she served as President of Executive Women International and was a member of the organization for many years. Among her favorite hobbies was playing bridge with the Crest Forest Bridge Club, formed in 1958, as well as playing with a long standing Wednesday bridge group of friends. She enjoyed traveling and loved to read novels. A big passion of hers was Alabama Football and traveling to the games with her husband for many years. Mary Jo

was an active member of Grace United Methodist Church until its closing. She and Merl then joined Irondale United Methodist Church. A memorial service will be held on Friday, January 15, 2016 at 2:00pm at the Irondale United Methodist Church

with the Rev. Taylor Gallman officiating. In accordance with her wishes, Mrs. DeMoll will be cremated and her ashes interred at the Alabama National Cemetery in Montevallo next to her husband, Merl. In lieu of flowers, memorials may be made to the Irondale United Methodist Church, 400 Deering Street, Irondale, AL 35210 or your favorite charity. Cremation Center of Birmingham is taking care of arrangements.

Published in The Birmingham News from Jan. 11 to Jan. 13, 2016