

## ***A Message From Your President***



Tami Barker  
Hyatt Regency Wichita

Ladies I hope that you had an amazing January and February is starting off great as well. I know that many in our chapter have been battling the flu and illness going around. I pray that if you are ill while reading this that you are on the mend and getting better.

In January we had our monthly meeting over the lunch hour. The reasoning behind this was the board was hopeful that we would be

able to capture some representatives that may not be able to attend the evening functions consistently and help those that suffer from “mom guilt” when they are away. I was so very pleased with our turnout. We had 36 attend – this included a prospective new member, 2 guests and 2 executives along with an Alumni Member. I felt that this meeting was a success and hope that those of you who attended felt the same. Officer Lisa Berg was able to give us information on the homeless population in Wichita and was able to answer and clarify some concerns and questions many of us have. The Homeless Outreach Team works tirelessly to help our homeless population advance and change their situation with programs and resources that can change their lives.

I look forward to seeing you at the February meeting where Professional Development will be provided in a “fun” way. We will be having a Wine Class in which we will learn the basics on wine and let our taste buds experience wine with different flavors. We will not be serving dinner at this meeting – we will have lighter appetizers. We will also be having a short business meeting as well.

March brings a fundraiser for the Chapter. You have an opportunity for your firm to be a host of a fireside lunch or dinner. We are still looking for hosts. This is an awesome opportunity for you to showcase your company and spend time with a small number of representatives and get to know them much better. If you are interested – please contact Darna Gould – Fundraising Director.

Thank you to each of you for what you do for your firms, your community and EWI Wichita.

### **2017-2018 Officers & Directors**

#### **President**

Tami Barker  
Hyatt Regency Wichita

#### **Vice President**

Jessica Emrick  
Wichita Marriott

#### **Secretary**

Gina Hess  
Kansas Health Foundation

#### **Treasurer**

Tracy Lucas  
High Touch Technologies

#### **Fundraising**

Darna Gould  
HealthCore Clinic

#### **Membership**

Dana Taylor

#### **Director-at-Large**

Karen Smith  
Westar Energy

#### **Sergeant-at-Arms**

Denise Wickham  
Berry Companies, Inc

#### **Programs**

Jan Baggett  
Wichita Metro Chamber  
of Commerce

#### **Communications Director**

Pam Dinwiddie  
Textron Aviation

#### **Advisor**

Dawn Truman  
J.P. Weigand & Sons, Inc.

## Committee Updates



### Tracy Lucas | Treasurer

The financial position of EWI of Wichita is below:

#### **Chapter Operating Account:**

01/31/18 Ending Balance \$19,360.05

#### **Chapter BCDP Account:**

01/31/18 Ending Balance \$6,954.84



### Karen Smith | Director-at-Large

Corporate EWI held training for both ASIST and EWISP chairs regarding the new electronic process. Jeanetta Bolin served on the Corporate committee, thank you Jeanetta for your participation.

Committee chairs are working on confirming contact information and will be reaching out to those contacts to provide new procedures/processes for this year. I am looking forward to seeing how the new process will streamline our scholarship applicants.

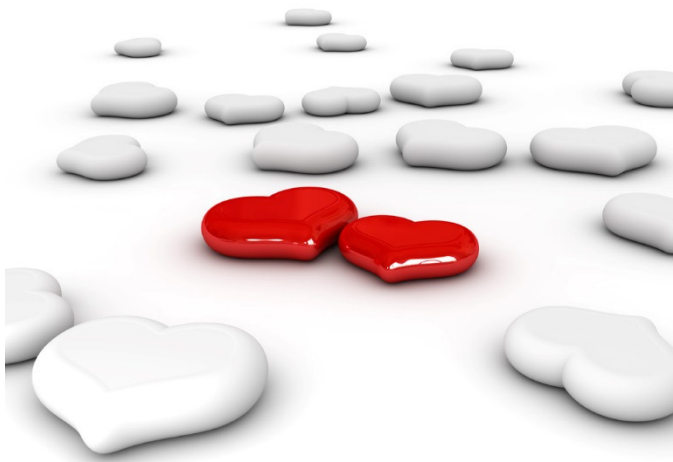


### Jessica Emrick | Vice President

I hope everyone had a lovely Valentine's Day with your love bug, girlfriends or favorite glass of wine!

I wanted to thank everyone who volunteered time, money or products to our Volunteer Opportunity for the first quarter. This event was hosted on Saturday, February 10 from 2:30pm to 4:30pm. It was a Valentine's Day Party for the residents of Harbor House and St. Anthony Family. Can you imagine being a child in a homeless shelter or a shelter for domestic violence victims? I can't even begin to imagine what they must be going through. I was so honored, to bring a ray of sunshine into their lives, if only for a moment! It was a lot of fun! The children created a Valentine's Day card and a customized wood block craft which included a polaroid from the Selfie Station to give to their mothers for Valentines Day. The women enjoyed a manicure while the kids created their masterpieces! Everyone enjoyed some light holiday hors d'oeuvres and punch and had the option of decorating their very own Valentine's Day cupcakes.

Our fearless leader Tami Barker and the board members are working hard towards one of her goals as President, which is for the Wichita Chapter of EWI to be recognized as a Chapter of Excellence. One of the qualities of a Chapter of Excellence, under careers is: The chapter to have a minimum of nine professional and ***philanthropic related programs*** yearly which include trainings, webinars, speakers, etc. It's a TEAM effort and we couldn't do this WITHOUT YOU! Thank you! Thank you! It was a team effort and I greatly appreciate everyone that worked to make this happen!



## Committee Updates



### Jan Baggett | Programs

We started out 2018 with a great lunch meeting with Officer Lisa Berg with the Homeless Outreach Team (H.O.T.). This team was formed several years ago to assist with the homeless population in Wichita. They have three full-time officers that work in partnership with homeless service providers and businesses to refer homeless to their resources or programs. They focus on trying to help homeless get back on their medications, refer them to substance abuse centers if they have mental health issues, help them with resume building, job referrals and building partnerships with them to get them the resources they need to make them successful. It was so good to hear that in Wichita there are no families living on the street and there are sufficient shelters to house the number of homeless in our area. The homeless numbers are down much in part due to the H.O.T. team. One of the questions the group had asked was what to do when a homeless person asks for money. Officer Berg suggested not giving them money, but share with them where they can go for help. Many times they won't use the money for what they say they needed. Below is a brochure for ideas where you can refer homeless. Another question was about the beggars you see downtown or on Rock Road. Officer Berg said for the most part, they are probably not homeless or needy and suggested not giving money to those folks.

Tami Barker and the Hyatt team will give us a wonderful wine tasting and pairing experience at the February 21<sup>st</sup> meeting. You don't want to miss the fun.

I'm looking forward to the Fireside lunches/dinners in March. It's a great opportunity to meet in a smaller group setting and learn more about one of our member firms. Stay tuned for your date, time and location.

<u>Wichita Police</u>	
Homeless Outreach Team (HOT)	(316) 854-3013
City Hall 455 N. Main	(316) 268-4111
<u>Wichita Police Substations</u>	
Patrol East 350 S. Edgemoor Community Policing 4135 E. Harry	(316) 350-3420 (316) 688-9545
Patrol North 3015 E. 21 <sup>st</sup> N	(316) 350-3400
Patrol South 211 E. Pawnee Community Policing 230 N. Mosley #D	(316) 350-3440 (316) 350-3430
Patrol West 661 N. Elder Community Policing 5803 W. Central	(316) 350-3460 (316) 337-9126

### Our Mission

The Wichita Police Department's mission is to provide professional and ethical public safety services in partnership with citizens to identify, prevent and solve the problems of crime, fear of crime, social disorder and neighborhood decay, thereby improving the quality of life in our community.



- Assisting in Case Management
- Relocation Specialists
- Temporary Housing Referrals
- Permanent Housing Referrals
- Job Referrals
- Mental Health Referrals
- Veteran Referral
- "Bus" Program reuniting with family or jobs in other cities
- Bridging the gap between police, homeless and service providers

**COMMUNITY SERVICES**  
**"HELPING CITIZENS IN NEED"**

**Dial 211!!!**  
Wichita is working to help people who are homeless. This brochure identifies some of the available community resources. Dial 211 for information on thousands of services to find help or to volunteer. To learn how to donate to the H.O.T. program, call 316-854-3013

<u>Shelters</u>	
Catholic Charities St. Anthony Family Shelter 256 N Ohio (Families with children)	(316) 264-7233
Catholic Charities Harbor House P.O. Box 3759 67201 (Families and singles who are victims of domestic violence)	(316) 263-4000
Inter-Faith Inn 320 E Central (Single men, women, families, unmarried couples)	(316) 264-8051
Warming Souls Winter Shelter (Nov 1-March 31) Check-in at the Inter-Faith Inn, 320 E. Central Mon- FPM Spiritual Center, 841 N. Market Women: TI, Wisconsin Safe Haven, 841 N. Broadway	(316) 264-8051 (316) 263-0006
OZ Opportunity Zone 1157 N. Emporia Day shelter and services for homeless youth 21 & under. Mon & Wed noon-5pm and Thursdays 3-5pm. Overnight crisis bed (off site).	(316) 440-9300
United Methodist Open Door (UMOD) - Resource Center 402 E. 2nd Day Shelter, Case Management & referral center (open 7:00 am - 5:00 pm. Serving adults and families)	(316) 265-9371
Union Rescue Mission Shelter 2800 N Hillside (Men only)	(316) 687-4673
Wichita Children's Home 7271 E. 37th Street North (Shelter, case management, advocacy & other services for children 0-17. Survivors of human trafficking (ages 12-17), that are referred by law enforcement and mentors, or survivors of human trafficking.)	(316) 684-4581
YWCA Women's Crisis Center P.O. Box 1740 / 67201 (24-hour emergency shelter and crisis intervention/outreach support for victims of domestic violence ONLY)	(316) 267-SAFE (316) 267-7233

### Transitional & Permanent Housing

Bridge:  
7271 E. 37th Street North  
(16-23 yrs. old homeless youth with or without children)

Gerard House 3144 N Hood (Res. Home for pregnant teens/women & 2 months after birth)	(316) 832-0777
Inter-Faith TI Wisconsin Safe Haven 841 N. Broadway Homeless single men/women with severe mental illness (by referral only). Transitional shelter with case mgmt, food and transportation.	(316) 263-0006
Salvation Army Homeless Services 350 N Market (Single women, couples, families)	(316) 263-2196
Shalom Homes of Wichita 4802 E. Arlene (Res. Homes for Veteran Men & Women)	(316) 516-6133
Step Stone 1329 S. Bluffview (Housing Program for women & children suffering from DV)	(316) 265-1611
Sanctuary House & Magnolia Place 402 E. 2nd (Adult female permanent supportive housing or youths 17-24)	(316) 303-9320
<u>Meals - Breakfast</u>	
First Baptist Church 216 E 2 <sup>nd</sup> (7:30 am Sunday)	(316) 263-5285
<u>Meals - Lunch</u>	
College Crest Church of Christ 2615 N. Walleley (11:30 am - 1:00 pm - Mondays) (Food pantry 9:30 am-11:30 am-Thurs)	(316) 686-1981
Episcopal Social Services - Venture House 1010 N. Main (11:00 am - 12:00pm - Mon-Fri-Must be in their program)	(316) 269-4160
St. Paul's AME Church 1756 N Platt (Noon - 1:00 pm - Friday Food Bank 3 <sup>rd</sup> Friday of Month)	(316) 265-5881
Tabernacle Baptist Church 1817 N Volusia (11:30 am - 12:45 pm - Tuesday)	(316) 681-3954
United Methodist Open Door Homeless Resource Center 402 E. 2nd (Noon - Mon-Fri-must sign up by 11:45 am. Homeless only)	(316) 265-9371
<u>Meals - Dinner</u>	
Lord's Dinner 320 N Broadway & 2820 S. Hillside (5:30 pm - 7:30 pm - Open 7 days a week - 365 days a year)	(316) 266-4966
Union Rescue Mission 2800 N Hillside (Meals served - 6:15 pm-Open 7 Days a week - 365 days a year)	(316) 687-4673

## Professional Development

Provided by Tami Barker, 2017/2018 President

This is the Best Thing you can do for yourself when you're feeling  
All alone in your Career

You probably think you're the only one who influences your career path. Realistically, it was you who powered through those three rounds of interviews, you who signed on that big client, you who put in long hours to get that promotion—right?

But the thing is, you're not the only person in those situations I just described above. On the other side, the hiring manager had to hire you despite you being maybe a bit underqualified. The client had to take the risk of signing on with a new company. The manager had to put his or her faith in you that you were ready for more responsibility. In addition to all your hard work, someone else also *took a chance on you* —even if he or she didn't explicitly contribute to your achievements.

This is the major theme in a recent post by Bijan Sabet titled, [“Who took a chance on you?”](#) In it, he lists out and gives thanks to the people throughout his life who gave him a shot despite the odds.

One reader was so inspired by the idea he made his own list titled, [“‘The Credit Goes to...’ Resume.”](#) And in his, he acknowledges the co-workers, investors, customers, and friends who lead to his career successes. These people gave him ideas, room to grow, and the confidence to go after his goals—non-tangible things, yes, but still just as important.

His closing statement says it all: “Reading my resume laid out this way really makes me believe in luck and privilege. Merit is part of the story, but never the whole story. Huge gratitude to the people on this list and to the dozens of other people that have helped give me opportunities.”

So, the next time you're feeling like you're alone on your career path, forced to slog through it all by yourself, consider writing out your own “The Credit Goes to...” resume and showing gratitude to the [people who helped you](#) along the way.

It's not only [good for you](#), but it's a great reminder that you're never alone in your journey—and that you're surrounded by some pretty awesome and supportive people.

Written by Alyse Kalish – Associated Editor, The Muse



## Chapter Events



### ***New Member Firm!***

**Member Firm:** Western Associates, Inc.  
**Executive Representative:** Brian Crofoot  
**Representative:** Kristina Keeter



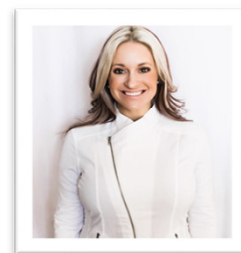
**Introducing our newest Member firm** - *Western Associates, Inc.* where promoting your business is their business. Started in 1956, an expertise in building brands, they offer unique, quality promotional products, excellent service and customer-focused marketing. From their office in Marion, Kansas, they are a premier source for branding solutions! [www.westernassociates.com](http://www.westernassociates.com)



**Executive Representative:** Brian Crofoot is a third-generation son in the family business. Western Associates was started by his Grandfather 62 years ago and Brian's dad and uncle are still working within the company. The family business has grown into 5 states and over 50 employees!

Brian grew up in Marion, Ks. And has lived in Dallas and Virginia until he recently moved back to his hometown to help with the family business. He's traveled all over the world where he has gained experience in sales, marketing and manufacturing. Over the last few years, Brian has had a lot of adventure including getting married and running an amateur motocross racing team that traveled nationwide.

**Representative:** In 2017, Kristina Keeter partnered with Western Associates. She specializes in Promotional Branding and assists businesses in their branding and promotional product needs. Thru business strategy and development she makes sure marketing goes one step further with the right products branded to reach the right audience with the businesses mission and vision in mind.



Kristina Keeter was born and raised in Wichita/Derby Kansas. She studied Business Administration, Marketing, and Accounting at Wichita State University. Kristina has worked for the Buckle as a trainer with a focus on marketing and business growth, she was the Director at Healing Waters and prior to her current position she managed her own marketing and consulting business.

## Chapter Events



### **NEW EXECUTIVE REPRESENTATIVE!**



**Commerce Bank - Member Firm since 2001**

**New Executive Representative:** Monte Cook, President & CEO

In November, Commerce Bank announced Monte Cook as the new President and CEO of Commerce Bank-Wichita. We are pleased to announce that Monte Cook will be the new Executive Representative for our current Member Representative Teresa Arthur. Additional EWI Representation for Commerce Bank includes; Executive Representative Marilyn Pauly and Member Representative Jeanetta Bolin.

Monte has been with Commerce Bank since 1995 and has 40 years of experience working in banks ranging from \$100 million to \$20 billion in deposits. The varied size of banks has provided an opportunity for Monte to hold many positions in all lines of business. His primary responsibilities have been in retail banking, overseeing branch banking, retail lending, mortgage lending, small business lending, and operations.

Monte received a B.S. in Business with a minor in Accounting from Wichita State University. As a life-long resident of Wichita, he has been involved in several community endeavors including Big Brothers Big Sisters, Rainbows United, Rotary, Kansas Humane Society, Wichita Children's Home, Kansas Junior Livestock, and Kansas Mission of Mercy.

Click here for more information about [Monte Cook](#) or [www.commercebank.com](http://www.commercebank.com)

## In The News

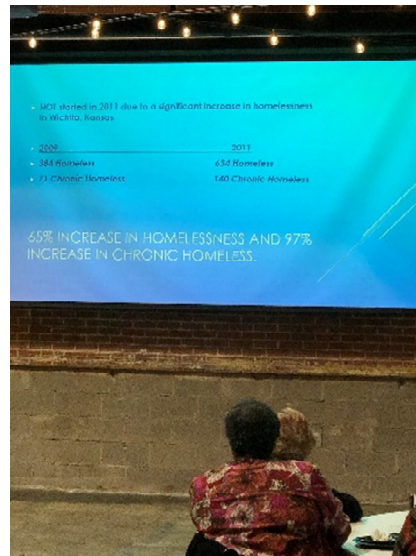
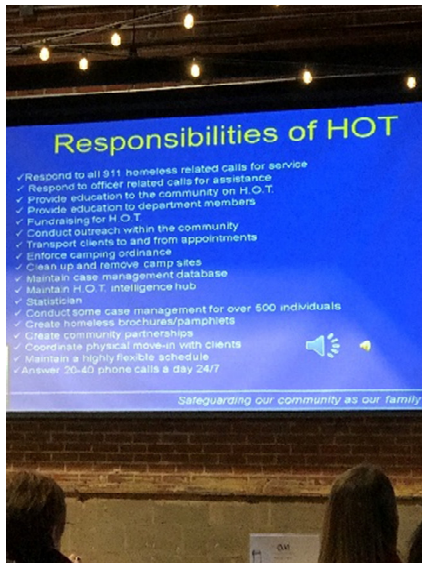
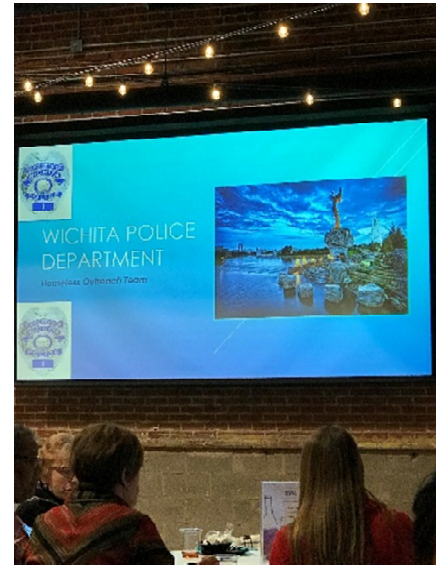
### Wichita Business Journal January 12, 2018





## Chapter Events

### Homeless Outreach Team (H.O.T.) January 17, 2018





## Chapter Events



CONNECTIONS | CAREERS | COMMUNITY

### Wichita Chapter

## Wine Tasting 101

With Nate Beyer, Director of Banquets  
Hyatt Regency



**Hyatt Regency**

**Wednesday, February 21**

**5:30pm Networking**

**6pm Program**

Light Hors d'oeuvres served  
as Nate instructs us on  
foods that will pair well  
with the wines.

Chapter Events

# EWI Lunch Bunch

**When:** Thursday February 22, 2018

**Time:** 11:45 AM

**Location:** Margarita's Cantina  
3109 E Douglas

RSVP to Theresa Hogan

[mary.t.hogan@ampf.com](mailto:mary.t.hogan@ampf.com)



## Chapter Events



# YOU ARE INVITED

## To Host a Fireside Lunch or Dinner.

### What

Fireside lunches/dinners offer EWI members the opportunity to make connections & develop lasting relationships both personally and professionally.

### Why

The March Fireside Gatherings are one of EWI Wichita's Fundraiser Events for the year

### Where

The hosting firm will determine the location, time, & menu for their Fireside Gathering, in the month of March. In addition, the hosting firm will be responsible for the cost associated with the meal. This is a great way to showcase your firm.

### Contact

If your firm would like to host a Fireside Gathering, Please contact Davna Gould with HealthCore Clinic, Inc. Phone: 316-612-6883 or email: [DGould@healthcoreclinic.org](mailto:DGould@healthcoreclinic.org)







**Happy Birthday to YOU!!!**

February 3 ~ Nancy Umholtz, Delta Dental of Kansas  
February 24 ~ Melissa Mantz



CONNECTIONS | CAREERS | COMMUNITY

### JOIN THE CONVERSATION!



facebook.com/ewicorp



@ewicorporate



@ewicorporate



pinterest.com/ewicorporate



We post the chapter meeting minutes on our EWI Wichita website at  
<https://ewiwichita.org/>

#### ABOUT EWI

Established in 1938, EWI is a non-profit organization with more than 1,900 member firms and 2,200 representatives in major cities throughout the United States and Canada.

EWI brings members together to promote member firms, to enhance personal and professional development, and to encourage community involvement.

As a premier organization for networking and leadership development for today's business professionals, EWI offers professional development through its Academy of Leadership, scholarships, online learning, and philanthropic initiatives with a focus on literacy.

EWI also provides over 600 board positions to women on the corporate and chapter level annually. For more information, visit [ewiconnect.com](http://ewiconnect.com).



<https://www.facebook.com/EwiOfWichita/>



<https://twitter.com/EWIWichita>

Share your news & photos in the  
monthly *Connect*

Contact: Pam Dinwiddie  
[pdinwiddie@txtav.com](mailto:pdinwiddie@txtav.com)

Submission deadline:  
March Issue ~ 3-9-18

### Upcoming Chapter Meetings

Third Wednesday of  
each month unless  
otherwise noted

**Wednesday, February 21**

#### **Wine Tasting 101**

Hyatt Regency,  
244 N. Mosley  
5:30 pm – 7:30 pm

**March**

**Various Fireside Gatherings**

### Chapter Board Meetings

Second Wednesday of  
each month

~All members are welcome~

Contact Tami Barker  
at [tami.barker@Hyatt.com](mailto:tami.barker@Hyatt.com)