

## *A Message From Your President*

### **Pam Dinwiddie | President**

Happy New Year ladies!



How hard to write or type 2020...I'm struggling with it a bit! 😊 I learned an interesting tidbit that I thought I'd pass along to you regarding the new year. When you sign documents, you should write 2020 and not just 20 as we normally would do. If you use just the two digits then anyone can add on to your year. I hadn't thought about it until it was brought to my attention.

We've decided to change up our January chapter meeting and do the 50th anniversary celebration in August when we have our Executives Night here at Textron Aviation.

This month we are having Bob Layton, our Wichita City Manager, speak to us about what's happening in our city. We will also have the Kendra Scott Pop-Up Shop during our social time. We receive 20% of the profits which will go into our BCDP account for scholarships, etc. I'm excited to see you at the Hyatt at 5:30 pm on January 15!

Here is a link to the Kendra Scott website:

[https://www.kendrascott.com/?utm\\_medium=organic&utm\\_source=google&utm\\_campaign=locallisting\\_wichita](https://www.kendrascott.com/?utm_medium=organic&utm_source=google&utm_campaign=locallisting_wichita)

I want to remind everyone to make sure you're taking some time to look through the various EWI websites. There is a wealth of knowledge to make sure you are getting everything you can out of our organization.

EWI Corporate website is [www.ewiconnect.com](http://www.ewiconnect.com)

EWI of Wichita website is <https://ewiwichita.org/>

In closing, I want to ask that you please continue to keep our fellow EWI sisters, who are going through so much in their personal lives, in your thoughts and prayers.

All my best,  
Pam

### **2019-2020 Officers & Directors**

#### **President**

Pam Dinwiddie  
Textron Aviation

#### **Vice President**

Kristina Helm  
Western Associates

#### **Secretary**

Denise Wickham  
Berry Companies, Inc

#### **Treasurer**

Teresa Arthur  
Commerce Bank

#### **Sergeant-at-Arms**

Nancy Umholtz  
Delta Dental of Kansas, Inc.

#### **Director-at-Large**

Jennifer Drace  
John A. Marshall

#### **Fundraising Director**

Hayley Hobbs  
Butler Community College Foundation

#### **Communications Directors**

De Nelson, City of Wichita  
Tammy Voth, Textron Aviation

#### **Membership Directors**

Jan Baggett, Wichita Chamber of Commerce  
Theresa Hogan, Stoutheart Financial Group

#### **Programs Directors**

Annie Murach, United Way of the Plains, Inc.  
Jordyn Ortega, WSU Foundation

## Committee Updates



**De Nelson &  
Tammy Voth  
Communications  
Directors**

Do you have good news? We'd love to share your good news – both personal and professional – in the next Connect. Send information to De, Tammy, or Allison.



**Update on Tracy Lucas**

Please continue to keep Tracy, Mark, Ben and Connor in your thoughts and prayers during this difficult time.

If you'd like to send a card, their home address is:

5736 W 41st Circle South  
Wichita, KS 67215



**Teresa Arthur | Treasurer**

The Financial Position of EWI  
Wichita as of 12/31/19 is:

**Chapter Operating Account:**

11/30/19 Opening Balance: \$15,708.25

12/31/19 Reconciled Bank Balance: \$16,158.79

**Chapter BCDP Account:**

11/30/19 Opening Balance \$3,586.03

12/31/19 Reconciled Bank Balance \$3,886.03

**MeriTrust Savings Account:**

12/31/19 Balance \$24,242.58

**Ameriprise Endowment Account (Stoutheart  
Financial):**

12/1/19 Balance \$64,818.66

12/31/19 Balance \$65,909.23

Please note that all ***Membership Dues*** are now being paid through EWI Corporate, and invoices for 2020 Dues have been sent out via email from Corporate ("Executive Women International") with instructions. Please reach out to Teresa at 261.4730 if you did not receive your invoice.

Please update your accounting records to reflect Teresa as the new EWI Wichita Treasurer when paying your ***Monthly Meeting Fees***. Teresa's mailing address is:

Attn: Teresa Arthur – Commerce Bank  
c/o EWI of Wichita  
P.O. Box 637  
Wichita, KS 67201-0637

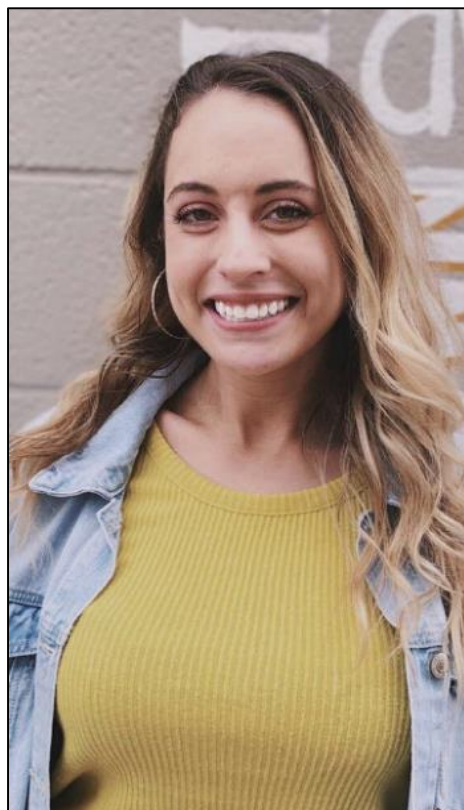
## **Member Spotlight – Mariah Regier**



**New 2<sup>nd</sup> Representative:  
Sedgwick County Zoo**

**MARIAH REGIER**

Welcome Mariah!



Mariah started as the Group Events Coordinator for Sedgwick County Zoo in April of 2019. She oversees and coordinates all private events for the Zoo including company picnics, birthday parties, weddings and meetings. Her first year has included coordinating 210 events.

Mariah graduated from Kansas State University with a Bachelor's of Science in Hospitality Management with a minor in Business Administration. While in college, she was a part of the Professional Event Management Society, was on the planning committee for the K-State Travel and Dining Auction, won the College of Human Ecology Outstanding Senior Leadership award and also interned with a special events company in Chicago. Before starting at the Zoo, she worked for Culinary Catering here in Wichita as an Event Manager.

In this past year Mariah has fostered for the Wichita Animal Action League and plans to continue in 2020. In her spare time she enjoys spending time outside with her dog, Memphis, and traveling.

She says her resume isn't as impressive as most of the EWI ladies, but hopefully being a part of this group will help her expand on that!

## Member Spotlight – Dawn Truman



**ReeceNichols**  
SOUTH CENTRAL KANSAS  
An Independently Owned and Operated Member of the Reece & Nichols Alliance, Inc.  
**COMMERCIAL DIVISION**

## PROFESSIONAL PROFILE

### DAWN TRUMAN

**SENIOR VICE PRESIDENT & GENERAL MANAGER  
COMMERCIAL DIVISION**



✉ dawntruman@reecenichols.com  
☎ 316.260.5900  
🌐 www.rncommercial.com

**Welcome back,  
Dawn!**

As General Manager of the Commercial Division for ReeceNichols South Central Kansas Commercial Dawn provides leadership and support for the commercial agents. She assists with overseeing the company operations and implementation of marketing strategies, presentation materials, and corporate calling programs. Dawn has been involved in the real estate community for over 35 years.

Dawn has resided in the Wichita area for more than 35 years. She has two grown sons and enjoys spending time with her grandchildren as well as playing golf, running, and biking.

#### SCOPE OF SERVICE:

Supervision of the Commercial & Auction Divisions  
Coach associates to improve skills & increase productivity  
Generates resources and/or revenues  
Client and business development

Promote company in industry & community  
IT support and strategy development  
Strategic planning development to increase market share  
Oversee development of marketing materials

#### DEGREE:

Masters in Business Administration,  
Friends University

Bachelor's in Business Administration and Psychology  
with concentration in Mathematics, Evangel College

#### MEMBERSHIPS:

Realtors of South Central Kansas (RSCK)  
Kansas Association of Realtors (KAR)  
National Association of Realtors (NAR)

Kansas CCIM Chapter Board of Directors 2020-2021  
Women in Commercial Real Estate (WICRE)  
CIE Committee Chair 2019-2020

#### COMMUNITY INVOLVEMENT:

Kansas Women of Distinction 2012  
KREC Commercial Task Force 2018 - 2019  
WSU Center for Real Estate Advisory Board  
Chamber of Commerce KOP Committee  
United Way Allocations Panel  
Together Wichita 2014 Board of Directors

Wichita Metro Chamber of Commerce Advisory Board  
Race for the Cure  
Habitat for Humanity  
YMCA Strong Kids  
Executive Women International (EWI)  
Board of Directors (2011 - 2018)

316.260.5900 | [www.rnsck.com](http://www.rnsck.com)

1551 N. Waterfront Pkwy., Ste. 301, Wichita, KS 67206



### January Birthdays

**No January Birthdays! If your birthday is in January, and we missed it, please email De Nelson or Tammy Voth and they will get it added to the EWI Calendar.**

### Good News

**Have good news (personal or professional) to share? Send it to De Nelson, Tammy Voth, or Allison Walden to be featured in next month's Connect.**



We post the chapter meeting minutes on our EWI Wichita website at <https://ewiwichita.org/>

#### ABOUT EWI

Established in 1938, EWI is a non-profit organization with more than 1,900 member firms and 2,200 representatives in major cities throughout the United States and Canada.

EWI brings members together to promote member firms, to enhance personal and professional development, and to encourage community involvement.

As a premier organization for networking and leadership development for today's business professionals, EWI offers professional development through its Academy of Leadership, scholarships, online learning, and philanthropic initiatives with a focus on literacy.

EWI also provides over 600 board positions to women on the corporate and chapter level annually. For more information, visit [ewiconnect.com](http://ewiconnect.com).



## Corporate Connections

### Board of Directors

Our board members lead and guide our organization and represent Chapters from across the country. Below is our 2019-2020 Board.



#### **CORPORATE PRESIDENT**

FELICIA J. SENTER

Tulsa Tech

EWI of Tulsa

[felicia.senter@tulsatech.edu](mailto:felicia.senter@tulsatech.edu)



#### **PRESIDENT ELECT**

KRISTI EMMONS JONES

FedEx Services

EWI of Memphis

[kemmons@fedex.com](mailto:kemmons@fedex.com)



#### **SECRETARY / TREASURER**

KATHY SCOTT

Ball Sun Fresh

EWI of Kansas City

[46director@ballsfoods.com](mailto:46director@ballsfoods.com)



#### **DIRECTOR**

CHRISTINE HEALY

The Printer Inc.

EWI of Des Moines

[chealy1142@gmail.com](mailto:chealy1142@gmail.com)



#### **DIRECTOR**

CHERYL HOLMES

CASTO

EWI of Columbus

[cholmes@castoinfo.com](mailto:cholmes@castoinfo.com)



#### **DIRECTOR**

MARJI ZAMORA

Speedy Printing

EWI of Houston

[marji@speedyprintingtx.com](mailto:marji@speedyprintingtx.com)



#### **ADVISOR**

RONWYN ANDERSON

Individual Member

EWI of Nashville

[ronwyna@aol.com](mailto:ronwyna@aol.com)



CONNECTIONS | CAREERS | COMMUNITY

#### **JOIN THE CONVERSATION!**



[facebook.com/ewicorp](https://facebook.com/ewicorp)



[@ewicorporate](https://twitter.com/ewicorporate)



[@ewicorporate](https://www.instagram.com/ewicorporate)



[pinterest.com/ewicorporate](https://pinterest.com/ewicorporate)



#### **CORPORATE OFFICE**

CORTNEY IHDE

Executive Assistant to the EWI Corporate Board of Directors

Corporate Office Manager

[cortney@ewiconnect.com](mailto:cortney@ewiconnect.com)

## EWI of Wichita Social Media:



EwiOfWichita



ewiwichita



ewiofwichita



ewiofwichta

Share events, photos, accomplishments and more with EWI Wichita Membership in one convenient location! Email social media submissions to De Nelson and Tammy Voth at the emails listed below.

De Nelson: [Dnelson@Wichita.gov](mailto:Dnelson@Wichita.gov)

Tammy Voth: [Tvoth@txtav.com](mailto:Tvoth@txtav.com)

Share your news & photos in the monthly *Connect*

Contact: Allison Walden  
[waldena@dlwichita.com](mailto:waldena@dlwichita.com)

Deadline for January Issue:  
February 4, 2020

**Upcoming Chapter Meetings**

Third Wednesday of each month  
unless otherwise noted

**January 15, 2020****5:30 – 7:30****Chapter Meeting**

Hyatt Regency

*Featuring Kendra Scott Shop*

Squad Up Link:

<https://www.squadup.com/event/s/ewi-of-wichita--january-chapter-meeting?legacy=0>

**February 19, 2020****Lunch Meeting****March 18, 2020****Fireside Meetings****Chapter Board Meetings**

Second Tuesday of  
each month

All members are welcome

Contact Pam Dinwiddie

[pdinwiddie@txtav.com](mailto:pdinwiddie@txtav.com)