

A Message From Your President

Pam Dinwiddie | President

Spring is in the air and I'm so ready to get my hands dirty planting flowers in the yard!

If you didn't get a chance to attend our lunch chapter meeting in February, you missed a wonderful presentation. Our member firm representative Allison Walden with Downing & Lahey East Mortuary presented on "Why Preplan." Allison went over the steps one should take to get all their wishes spelled out in a living document that can be updated throughout the years. She had handouts so if you couldn't attend, please reach out to her. Also thank you to our member firm representative Jordyn Ortega with the Wichita

State University Foundation Office for hosting our chapter lunch meeting.

Allison told us this was her first time presenting, but you couldn't tell it. Another fine example of why EWI helps in your professional and personal goals such as speaking in front of large crowds.

Our EWI Corporate office sent out the LCAM (Leadership Conference and Annual Meeting) details as early bird registration opened March 2. LCAM is September 16 – 19 in Albuquerque, NM. We'll be at the Sheraton Albuquerque Uptown. The keynote speaker is Ramunda Lark Young. Please look for the flyer in the newsletter and to register for LCAM 2020 click on this link: <https://ewiconnect.com/professional-development/events-conferences/>

Our March meeting will be our Fireside Chats. Member firm representative Hayley Hobbs with Butler Community College Foundation, along with her fundraising committee have put together a list of the hosting member firms along with the member representatives who will attend. These will be throughout the month of March and since they are one of our fundraising activities held everyone will be charged a meeting fee whether you attend or not.

If you haven't attended a fireside you are in for a treat. You get the "behind the scenes" look at our member firms and I always love the more intimate feel to these meetings. (Continued on next page)

2019-2020 Officers & Directors

President

Pam Dinwiddie
Textron Aviation

Vice President

Kristina Helm
Western Associates

Secretary

Denise Wickham
Berry Companies, Inc

Treasurer

Teresa Arthur
Commerce Bank

Sergeant-at-Arms

Nancy Umholtz
Delta Dental of Kansas, Inc.

Director-at-Large

Jennifer Drace
John A. Marshall

Fundraising Director

Hayley Hobbs
Butler Community College Foundation

Communications Directors

De Nelson, City of Wichita
Tammy Voth, Textron Aviation

Membership Directors

Jan Baggett, Wichita Chamber of Commerce
Theresa Hogan, Stoutheart Financial Group

Programs Directors

Annie Murach, United Way of the Plains, Inc.
Jordyn Ortega, WSU Foundation

Committee Updates

Pam Dinwiddie | President (continued)

Please make sure you've responded back to your Fireside host if you can attend. Also, don't forget to RSVP through the SquadUp link: https://ewiwichita.org/event/march-chapter-meeting-3/?instance_id=6999 to pay by credit card or to indicate that you'd like to be invoiced.

I would like to thank Kathy Armbruster with Allen, Gibbs, Houlik, Hayley Hobbs with Butler Community College Foundation, Darna Gould with HealthCore Clinic, Kristina Helm with Western Associates, Mallory Minor with Star Lumber & Supply and Theresa Hogan with Stoutheart Financial Group for hosting this month.

I hope you are taking advantage of reading the EWI Member Community posts:

<https://my.ewiconnect.com/communities/community-home/digestviewer?tab=digestviewer&CommunityKey=a2007945-8092-4e04-ad73-30d7edcdee3f>

You can log in and select which community you'd like to be involved in. When you join a community, you can select the frequency of the emails that you receive. For some of my communities I like to get real time information so when someone posts I immediately get an email with that post. Other communities I belong to, I'm fine with getting a weekly email with all the posts combined.

EWI has been one of the best decisions I made in my career. It's opened doors, fostered relationships that I wouldn't have had, and helped shape me into a better professional for my member firm, Textron Aviation.

I truly hope you are taking advantage of all that EWI has to offer. Remember I'm just a phone call, text or email away and I'd welcome a one on one with you if you'd prefer!

All my best,
Pam



Teresa Arthur | Treasurer

The Financial Position of EWI Wichita as of 2/29/2020 is:

Chapter Operating Account:

1/31/20 Opening Balance: \$17,804.03

2/28/20 Reconciled Bank Balance: \$19,991.45

Chapter BCDP Account:

1/31/20 Opening Balance \$2,713.48

2/28/20 Reconciled Bank Balance \$2,963.48

MeriTrust Savings Account:

2/1/20 Balance \$24,243.61

2/29/20 Balance \$24,244.57

Ameriprise Endowment Account (Stoutheart Financial):

2/1/20 Balance \$65,831.58

2/29/20 Balance \$63,788.93

Please note that all **Membership Dues** are now being paid through EWI Corporate, and invoices for 2020 Dues have been sent out via email from Corporate ("Executive Women International") with instructions. Please reach out to Teresa at 261.4730 if you did not receive your invoice.

Please update your accounting records to reflect Teresa as the new EWI Wichita Treasurer when paying your **Monthly Meeting Fees**. Teresa's mailing address is:

Attn: Teresa Arthur – Commerce Bank
c/o EWI of Wichita
P.O. Box 637
Wichita, KS 67201-0637

Committee Updates



Hayley Hobbs | Fundraising Chair

This month we are all participating in Firesides! Six firms and individuals are hosting and everyone is invited. Please pay attention to your email because you will receive your invitation from the firm or member that is hosting you. Remember that Firesides are fundraising meetings and all members are charged regardless of attendance at the Fireside they are invited to. Please make sure you use Squad Up to pay! It will be open all month.



From the Family of Tracy Lucas

Dear Pam & Wichita Chapter
of EWI,
Thank you for your
kindness in remembering
Tracy with your donation.
Your thoughtfulness and
generosity are greatly
appreciated!
The Tracy Lucas Family



Two EWI alumni happened to meet one another – by chance! – on the streets of Jerusalem. Imagine our surprise!

Pictured: Jamie Hunt & Pat Campbell

LCAM Update



2020 LEADERSHIP CONFERENCE & ANNUAL MEETING



The LCAM Committee train is continuing its journey... LCAM 2020 in Albuquerque, NM (Sheraton Albuquerque Uptown) arriving September 16-19, 2020! Don't forget to open your calendars and SAVE THE DATE for LCAM 2020 in Albuquerque, New Mexico!

Registration has opened and early bird rates are available until June 19, 2020. A registration link was sent out via email.

Our LCAM 2020 schedule is nearly complete. You may visit the conference website for up-to-date specifics as they are confirmed. (<https://ewiconnect.com/professional-development/events-conferences/>)



LCAM Community Service Project

This year's 2020 LCAM local non-profit recipient is Disabled American Veterans, New Mexico Chapter. The agency has expressed that their female veterans are underserved and EWI will be helping put together care packages for them with items such as: shampoo, hairbrush, nail file, chap stick, maxi pads, deodorant, toothbrush, etc.

Keynote Speaker

Ramunda Lark Young is a Connection Strategist, SocialPreneur, community advocate and passionate leader.



LCAM Reading Rally

The Annual Reading Rally will take place on September 16 at 8:30 am at Hodgin Elementary School. The committee will provide an Amazon Wish List to chapters with a goal to have a book for each child.

Member Spotlight – Barb Boulanger

**Replacement Representative
for Patricia Vizinni**

BARB BOULANGER

Welcome Barb!



Barb began her real estate career with J.P. Weigand & Sons in 1991 as a sales agent in the West office. She then joined the Relocation Department in 1994 to help with the large Pizza Hut Corporate move. In 1996 she was promoted to Corporate Inventory Specialist for the Relocation division. Her experience with pricing, reporting and property evaluations has become a resource for many within the company. Barb accepted the position as Branch Manager at the Andover office in July of 2008. Effective February 1, 2009, she was named Branch Manager of the East Harry Office when it merged with the Andover Office. In 2011 the East Harry Branch combined offices with the J.P. Weigand East Office and Barb was named Branch Manager.

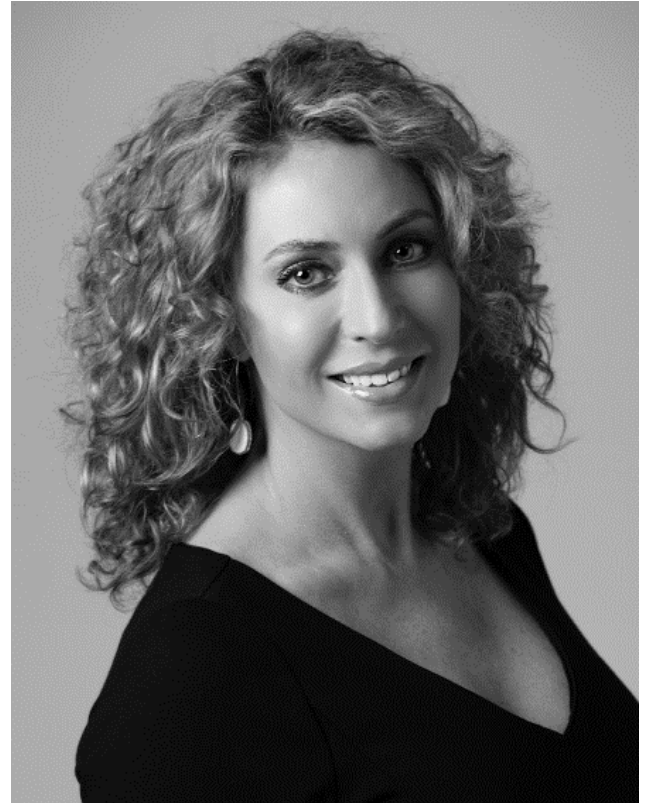
Barb enjoys working with sales agents, training and is active at both the local and state REALTOR® associations. Barb is currently serving on the RSCK (REALTORS of South Central Kansas) Board of Directors and also serves as the Board of Director Liaison for the Standard Forms committee. Barb is married with four children and three granddaughters. She enjoys spending time with family, working outside and tackling home projects.

Member Spotlight – Kelly Hunsaker

**Replacement Representative
for Sonja Seidl**

KELLY HUNSAKER

Welcome Kelly!



Kelly Hunsaker is an Oklahoma native, but came to Wichita in 2000. She graduated from Oklahoma State University in 1997. Before coming to J.P. Weigand, Kelly was the relocation director for Coldwell Banker Stucky & Associates here in Wichita. She also worked for a healthcare development company that developed facilities for skilled nursing, assisted living, memory care and independent living. Kelly started working at J.P. Weigand in January of 2013 and is the Director of Relocation & Business Development. She is the liaison between J.P. Weigand and relocation management companies. Kelly manages a team of relocation agents, represents relocation management companies in the sale of corporate owned homes and is responsible for bringing additional business opportunities to the relocation department for Weigand. She holds the RELO® Certified Coordinator (RCC) designation and the MRP® (Military Relocation Professional) certification. She received her Certified Relocation Professional (CRP) designation in 2016. Kelly is a member of the National and Kansas Association of REALTORS® and the REALTORS® of South Central Kansas.

Chapter Events – March Fireside Meetings**Fireside Meeting Details**

During the month of March, six firms/individuals will be hosting EWI members at their office/home.

You will be receiving information from the firm that will be hosting you.

Since Firesides are a fundraising meeting, all members will be charged whether they attend or not.

If you are unable to attend the meeting you are assigned to, please let Hayley Hobbs know and she will try and re-assign you.

If you have any questions, please contact:

Hayley Hobbs – hhobbs@buttlercc.edu;

Annie Murach - amurach@unitedwayplains.org; or

Jordyn Ortega – Jordyn.ortega@wichita.edu

Chapter Events – April Meeting

EWI April Chapter Meeting



Firm Night!

Hosted by Jessica Emrick, Marriott

Wednesday, April 15, 2020

5:30 – 7:00 pm

Wichita Marriott

9100 Corporate Hills Drive / Wichita, KS 67207



March Birthdays

March 13 ... Jennifer Drace

March 18 ... Sharon Thomas

March 28 ... Pat Campbell

Good News

Have good news (personal or professional) to share? Send it to De Nelson, Tammy Voth or Allison Walden to be featured in next month's Connect.



We post the chapter meeting minutes on our EWI Wichita website at <https://ewiwichita.org/>

ABOUT EWI

Established in 1938, EWI is a non-profit organization with more than 1,900 member firms and 2,200 representatives in major cities throughout the United States and Canada.

EWI brings members together to promote member firms, to enhance personal and professional development, and to encourage community involvement.

As a premier organization for networking and leadership development for today's business professionals, EWI offers professional development through its Academy of Leadership, scholarships, online learning, and philanthropic initiatives with a focus on literacy.

EWI also provides over 600 board positions to women on the corporate and chapter level annually. For more information, visit ewiconnect.com.

Corporate Connections

Board of Directors

Our board members lead and guide our organization and represent Chapters from across the country. Below is our 2019-2020 Board.



CORPORATE PRESIDENT

FELICIA J. SENTER

Tulsa Tech

EWI of Tulsa

felicia.senter@tulsatech.edu



PRESIDENT ELECT

KRISTI EMMONS JONES

FedEx Services

EWI of Memphis

kemmons@fedex.com



SECRETARY / TREASURER

KATHY SCOTT

Ball Sun Fresh

EWI of Kansas City

46director@ballsfoods.com



DIRECTOR

CHRISTINE HEALY

The Printer Inc.

EWI of Des Moines

chealy1142@gmail.com



DIRECTOR

CHERYL HOLMES

CASTO

EWI of Columbus

cholmes@castoinfo.com



DIRECTOR

MARJI ZAMORA

Speedy Printing

EWI of Houston

marji@speedyprintingtx.com



ADVISOR

RONWYN ANDERSON

Individual Member

EWI of Nashville

ronwyna@aol.com



CONNECTIONS | CAREERS | COMMUNITY

JOIN THE CONVERSATION!



facebook.com/ewicorp



[@ewicorporate](https://twitter.com/ewicorporate)



[@ewicorporate](https://www.instagram.com/ewicorporate)



pinterest.com/ewicorporate



CORPORATE OFFICE

CORTNEY IHDE

Executive Assistant to the EWI Corporate Board of Directors

Corporate Office Manager

cortney@ewiconnect.com

EWI of Wichita Social Media:



EwiOfWichita



ewiwichita



ewiofwichita



ewiofwichta

Share events, photos, accomplishments and more with EWI Wichita Membership in one convenient location! Email social media submissions to De Nelson and Tammy Voth at the emails listed below.

De Nelson: Dnelson@Wichita.gov

Tammy Voth: Tvoth@txtav.com

Share your news & photos in the monthly *Connect*

Contact: Allison Walden
waldena@dlwichita.com

Deadline for April Issue:
April 7, 2020

Upcoming Chapter Meetings

Third Wednesday of each month
unless otherwise noted

**March 2020
Fireside Meetings**

**April 15, 2020
5:30 pm**

Firm Night
Wichita Marriott

May 20, 2020
Chapter Meeting

Chapter Board Meetings
Second Tuesday of
each month

All members are welcome

Contact Pam Dinwiddie
pdinwiddie@txtav.com