

A Message From Your Incoming President



Kristina Helm | President

Hello EVERYONE! I have to start off by saying a BIG WAHOO! I am SUPER EXCITED TO be at the "HELM" this year for EWI. ☺ I know that COVID has made for a crazy few months, but I also know that our chapter has continued to stay strong and grow even through these challenging times. Please be sure to email me @ kristina@westernassociates.com if I can be praying for or helping you in anyway during these times. It is important we all know we are not alone.

My mission this year for EWI Wichita, is to work on Member Firm to Member Firm Business Building and how to help with business connections and business building within our chapter. To gain a knowledge of what each Member Firm does so that we may help refer business and support one another in the business realm. One of the key elements to EWI is bringing together key individuals from diverse businesses to promote member firms, enhance personal and professional development, and encourage community involvement. With our depth of professional knowledge and backgrounds within the Wichita Chapter I would like to focus on building up our team of professional women with encouragement, networking and business development. As we encounter a new year and new challenges with COVID-19, and the changes this had made to business, I have never been so sure that business building with each other will help be beneficial for our entire chapter.

We have our upcoming Installation of Officers on Wednesday, October 21st at 5:30pm. The meeting will be hosted at Flint Hills National Golf Club in Andover. We will be in the main clubhouse on the patio. If you have not made a reservation, please do so now at the link provided below: I hope to see everyone there!

<https://www.squadup.com/events/ewi-of-wichita--september-chapter-meeting-1>

(Yes, it is the October meeting link even though it says September

2019-2020 Officers & Directors

President

Pam Dinwiddie
Textron Aviation

Vice President

Kristina Helm
Western Associates

Secretary

Denise Wickham
Berry Companies, Inc

Treasurer

Teresa Arthur
Commerce Bank

Sergeant-at-Arms

Nancy Umholtz
Delta Dental of Kansas, Inc.

Director-at-Large

Jennifer Drace
John A. Marshall

Fundraising Director

Hayley Hobbs
Butler Community College Foundation

Communications Directors

De Nelson, City of Wichita
Tammy Voth, Textron Aviation

Membership Directors

Jan Baggett, Wichita Chamber of Commerce
Theresa Hogan, Stoutheart Financial Group

Programs Directors

Annie Murach, United Way of the Plains, Inc.
Jordyn Ortega, WSU Foundation

Most of you know, I had a baby August 31st and in my struggles with Postpartum, I realized my first focus this year, as we navigate through changing times-MENTAL HEALTH. Our Mission in EWI is Connections, Careers and Community-. What a better way to connect with each other in our communities than to help educate ourselves on Mental Health & Wellness. It is easy in these hard times to neglect our mental health and to feel alone in certain situations. I want to ensure we help each other in a positive uplifting way this year.

I am so EXCITED for our November Event- November 18th, 2020 @ Hyatt Place @ WSU from 5:30-7:30pm. We have an AMAZING speaker lined up: Taryn Zwegardt from The Village- Co Founder & Director of Counseling Services and Community Outreach. She will be speaking to us about not neglecting self care. She will address infertility or Postpartum Depression issues, facing holidays after losing a loved one, and dealing with COVID. Between Zoom calls, Homeschooling children and juggling work we have to have a streamlined work and life balance as working mothers with children. I don't know about you, but I could certainly learn a lot from this event and am looking forward to hearing her speak. With our first focus this year- MENTAL HEALTH please join me for this AWESOME EVENT!

Thank you for allowing me the opportunity to be your President this year. I know this is going to be an AMAZING YEAR! Wahoo!

Kristina Helm

Committee Updates



Teresa Arthur | Treasurer

The Financial Position of EWI
Wichita as of 9/31/2020 is:

Chapter Operating Account:

9/1/20 Opening Balance: \$17,872.16

9/30/20 Reconciled Balance: \$18,100.04

Chapter BCDP Account:

9/1/20 Opening Balance \$3,223.28

9/30/20 Reconciled Balance \$3,223.28

MeriTrust Savings Account:

9/1/20 Opening Balance \$24,250.67

9/30/20 Reconciled Balance \$24,251.66

Ameriprise Endowment Account (Stoutheart Financial):

9/1/20 Opening Balance \$69,914.33

9/30/20 Reconciled Balance \$68,887.93

A Note from the EWI Nominating Chair...Jessica Emrick Davies

I am so pleased to report our Slate of Officers for 2020-2021 is complete! I am grateful that we have so many within the membership that are excited to volunteer this coming year! At the same time, I am appreciative to those that have served on the board in the past. Without our volunteers the organization would not be what it is today.

2020-2021 Slate of Officers

Ladies of EWI, please consider the following individuals for the Officers and Directors during the 2020/2021 term.

I have a verbal consent from the following ladies listed to hold the various positions.

Proposed Slate of Officers – 2020/2021

President – Kristina Helm, Western Associates

Vice President/President Elect – Davna Gould, HealthCore Clinic

Treasurer – Kathy Armbruster, AGH, LLC

Secretary – Lori Armstrong, Derby Theaters

Proposed Slate of Directors- 2020/2021

Sergeant-at-Arms – Sydney Tuttle, Delta Dental

Membership – Jan Baggett, Wichita Chamber of Commerce
And Valerie Brashears, City of Wichita

Programs – Jessica Viramontez, Visit Wichita

Director-At-Large – Haley Hobbs, Butler County Community College
and Theresa Hogan, Stoutheart Financial

Communications – Allison Walden, Downing & Lahey Mortuary
and Jessica Emrick Davies, Wichita Marriott

Website: De Nelson, City of Wichita & Tammy Voth, Textron Aviation

Social Media: Pam Dinwiddie, Textron Aviation

Connect: Jessica Emrick Davies, Wichita Marriott

Fundraising – Mariah Regier, Sedgwick County Zoo and
Annie Life, Wichita Baseball

Advisor – Pam Dinwiddie, Textron Aviation



**EWI Installation of Officer's Meeting
October 21, 2020
The Flint Hills National Golf Club located at
1 Flint Hills National Drive, Andover, Kansas 67002**

*Directions, From Kellogg: South on Andover Road to 120th Street (also known as Pawnee), turn left. Then at the gated entrance on the right, turn right into FHN. Follow the road as it curves around until you come to a large parking lot. You are there!
The gate code will come in an email.*

**We will *make new connections* and Install the new Board of Director Officers on
an Autumn Night with
Light Hors d oeuvres in the Main Clubhouse from 5:30pm-7:30pm.
Come Meet your 2020-2021 Board of Directors**

[RSVP @ www.squadup.com/events/ewi-of-wichita--september-chapter-meeting-1](http://www.squadup.com/events/ewi-of-wichita--september-chapter-meeting-1)

(Yes, it is the October meeting link even though it says September)



Hey Gorgeous, Time for a Mental Health Check!

Don't neglect Self Care! Are you dealing with infertility or Postpartum Depression issues? Are you facing the Holidays after the loss of a loved one? Are you overwhelmed with Zoom meetings & home school children? Work life balance can be a challenge for us all regardless of our children's age.

November 18, 2020
Hyatt Place @ WSU
5:30pm-7:30pm

Speaker:

Taryn Zwegardt, LMSW
Co-founder & Director of
Counseling Services & Community Outreach



The work at the Village, reduces stigma by building awareness, improving quality care by educating mental health providers, and providing direct service for those with limited resources. They are dedicated to providing individual and group support services specifically to mothers suffering from postpartum depression and anxiety, or other mental health complications related to infertility, pregnancy loss, and/or infant loss. If you know someone who might be benefit from therapy, bring them to the November meeting!

December's Meeting will be our ANNUAL Community Outreach's Boxing of Food for Colvin Elementary. There's more of a need now, than ever before, according to Colvin's Social Worker, Julie Rinke! This year will look a little different from years past....More details are coming soon!



AUGUST MEETING



If you missed the **EWI Virtual Bootcamp** in August, you missed a real treat.



Theresa Hogan, Stoutheart Financial Group, did a fabulous job of taking us through the history and structure of EWI in a fun and meaningful way. We heard from current board members about what their position on the board entails. We heard about our scholarships, LCAM and Leadership Caucus and so much more. The best part was hearing testimonials from our current members about what EWI means to them. And the next best thing was our Amazon Gift Card Drawing. As you can see, **Tammy Voth, Textron Aviation**, was the lucky winner.

LCAM Spotlight- September Recap

I hope you were able to join the Free Virtual
2020 Leadership Conference & Annual Meeting



Kristi Emmons Jones, *Corporate President* Memphis Chapter, and her new board were introduced.

- All-member town hall meeting
- Leadership Caucus training for all Chapter members
- Award recognition celebration
- 2020 Annual Meeting



[Lori Giovannoni](#) spoke on
Presentation Skills via Zoom meetings

Break outs included Membership and
Fun Fundraising Ideas!



Mark Your Calendars!!!

The September 2021 LCAM Conference is in Albuquerque, New Mexico

LCAM Spotlight –

The Corporate President, each year, selects a chapter from the organization that exemplifies the spirit of the organization, has accomplished a goal with phenomenal results, has embraced the vision and mission of what EWI stands for, OR has just simply done an awesome job this year!

Our chapter walked away this year with a very coveted leadership award!
The Tillie Award!

Pam Dinwiddie and her board of directors did a fabulous job this year leading the Chapter. Felicia Senter, EWI Corporate President for 2019-2020, was impressed with how our chapter quickly moved from traditional chapter meetings to virtual Zoom meetings due to COVID and appreciated that Pam invited the entire corporate board to participate in our Zoom meetings. The Wichita chapter had the highest increase in membership this year, out of 38 chapters across the USA and Canada! Kudos to the membership directors Jan Baggett with Wichita Metro Chamber of Commerce & Theresa Hogan with Stoutheart Financial! Great job!





Wichita Chapter's First 3 EWI Presidents:

Mary Williams – 1970
The Coleman Company*

Wanda Lee Zuercher – 1971
Love Box Company, Inc.*

Dorothy Johansen – 1972
Cessna Aircraft Company*

According to Veronica Weeks, 1955 INK (EWI's first magazine) editor, "The Tillie Award was the brainchild of Past National President, Ruby Sorber, of Payne Heating Company, Los Angeles Chapter (who served the organization during 1951-1952.) She recognized the need for an incentive to improve the general quality of the Chapter Notebooks, and to provide more avenues of contact and information between the Chapters and Corporate Office."

Each year a national committee was appointed to judge the Chapter Notebooks. Verona stated the awarding of the Tillie was one of the most anticipated moments of the National Convention. In commemoration of EWI's 70th Anniversary, the Corporate Board felt it fitting to resurrect the Tillie Award at this important milestone in EWI history. Tillie was first awarded in 1951 to EWI of Las Vegas and the final award was presented in 1971 to EWI of Wichita. Tillie was awarded for the finest Chapter reporting; Wendy Cowley, 2007-2008 Corporate President, modified the award to include recognition for best practices.

With approval and support of the Corporate Board, it was decided that Tillie would be awarded based upon review of Chapter PULSE newsletters, visits with Chapters, and conversations with the membership. The Corporate Board looked for a Chapter doing something big, exciting, and cutting-edge for the reinstatement of the Tillie.

Events – 2020-2021 Reading Rally & Botanica's Illuminations

EWI Annual 3rd Grade

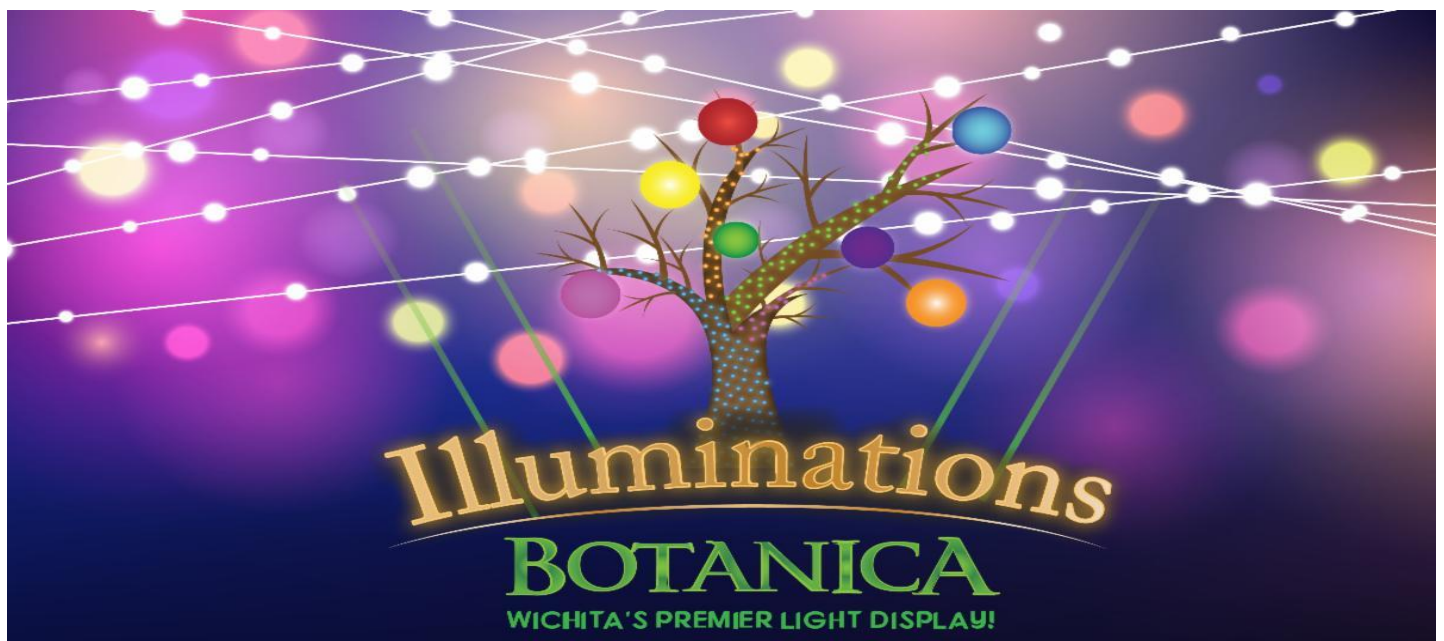
Reading Rally

Has been moved to the Spring of 2021
at Colvin Elementary School's request

Colvin Elementary School
2820 S. Roosevelt

Everyone is Welcome! Contact Nancy Umholtz
(numholtz@deltadentalks.com)

or Jessica Emrick Davies for more information on
Sponsorship Opportunities for the Reading Rally
(jessicaemrick@wichitamarriott.com)



Illuminations
BOTANICA
WICHITA'S PREMIER LIGHT DISPLAY!

WALK THRU	AND	DRIVE THRU
Nov 14 - Jan 9		Nov 14 - Jan 30
\$13 Adults		Sunday - Thursday
\$9 Children & Members		\$20 per car
2 & under are FREE		Friday - Saturday
		\$25 per car

You MUST go to botanica.org to pre-purchase your tickets for Illuminations with a selected date and time slot. NO tickets will be sold at the door. There is also a limited number of guests for each night due to keeping people safe and social distanced this year so many nights will sell out. Safety procedures, changes due to Covid-19, and other frequently asked questions can be found on our website.



RECOGNITION

Did you see the EWI Firms Featured in the Wichita Business Journal?

DIVERSITY & INCLUSION AWARD:

Executives:

Junetta Everett - Delta Dental

Teresa Lovelady - Health Core

Firms:

City of Wichita

High Touch Technologies

WOMEN WHO LEAD:

Executive - Peggy Ward - J.P. Weigand & Sons

WOMEN IN BUSINESS, INTERVIEWS

(Reason for their Career Choice, Mentors, Biggest Challenges, Advice Received & Given, Greatest Professional Achievement)

Richelle Knotts, ReeceNichols South Central Kansas

Heather Rinkenbaugh, Butler Community College

Ebony Clemons Ajibolade, Evergy

Stephanie Gaskill Jakub, J.P. Weigand & Sons, Inc.

Congratulations!

EXECUTIVES
OF THE YEAR



Paul **ALLEN**
AGH

Wichita Business Journal's
2020 Executives of the Year award
Paul Allen of Allen, Gibbs and Houlik, LLC.

PROMOTION CORNER

Congratulations **Monique Boyd** @ member firm **Spirit AeroSystems**, on her recent promotion to First Level Manager, Executive Administration.

Monique will continue to support Sam Marnick, member firm executive, and will now have direct responsibility for Wichita executive assistants and global oversight to the executive administrative role!

Allison Morris Walden, has been promoted to Vice President of **Downing & Lahey East Mortuary!**





Kristina and Clint Helm celebrated the birth of their daughter, Presleigh Grae born August 31st at 7:50am. Presleigh weighed 9lbs. 9 oz. and was 20" long at her delivery!



Allison & Tyler Walden celebrated birth of their baby boy, Joseph "Joey" Parker born October 8 at 9:42am.

Joey weighs 8 pounds 2 ounces and is 21.25 inches long.

Allison and Joey are doing well!

Would you like us to post a Professional recognition via a chapter email, Connect article or announce it on our EWI social media? If so, please send those items to President Kristina Helm and copy the Communications Director, Allison Walden so that they can be shared!



October Birthdays

October 2 ... Theresa Hogan
October 15 ... Annie Life

Have you met Cortney Ihde?

She supports the
Corporate board of directors,
and all EWI chapters!



Executive Assistant/Office Manager,
Executive Women International
Work: 262.269.5625
Personal: 262.443.0814
cortney@ewiconnect.com



We post the chapter meeting minutes on our EWI Wichita website at
<https://ewiwichita.org/>

ABOUT EWI

Established in 1938, EWI is a non-profit organization with more than 1,900 member firms and 2,200 representatives in major cities throughout the United States and Canada.

EWI brings members together to promote member firms, to enhance personal and professional development, and to encourage community involvement.

As a premier organization for networking and leadership development for today's business professionals, EWI offers professional development through its Academy of Leadership, scholarships, online learning, and philanthropic initiatives with a focus on literacy.

EWI also provides over 600 board positions to women on the corporate and chapter level annually. For more information, visit ewiconnect.com.



CONNECTIONS | CAREERS | COMMUNITY

Corporate Connections

JOIN THE CONVERSATION!



facebook.com/ewicorp



@ewicorporate



@ewicorporate



pinterest.com/ewicorporate

Board of Directors

Our Corporate Board members lead and guide our organization and represent Chapters from across the country. Below is our 2020-2021 board.



**CORPORATE PRESIDENT
KRISTI EMMONS JONES**

Amare Global

EWI of Memphis

kemm64@gmail.com



**PRESIDENT-ELECT
CHRISTINE HEALY**

The Printer Inc.

EWI of Des Moines

chealy1142@gmail.com



**SECRETARY / TREASURER
CHARLIE ROSENQUIST**

BlueCross BlueShield of
Tennessee

EWI of Chattanooga

charlie_rosenquist@bcbst.com



**DIRECTOR
KATHY SCOTT**

Balls Foods

EWI of Kansas City

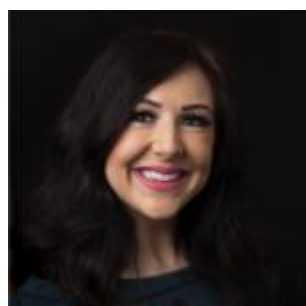
46director@ballsfoods.com



**DIRECTOR CHERYL HOLMES
CASTO**

EWI of Columbus

cholmes@castoinfo.com



**DIRECTOR CHRISTINE
LAIRD**

Greater Oklahoma
City Chamber of
Commerce

EWI of Oklahoma City

claird@remergeok.org



DIRECTOR MARJI ZAMORA

Speedy Printing

EWI of Houston

marji@speedyprintingtx.com



**ADVISOR
FELICIA J. SENTER**

Tulsa Tech

EWI of Tulsa

felicia.senter@tulstatech.edu

EWI of Wichita Social Media:



EwiOfWichita



ewiwichita



ewiofwichita



ewiofwichta

Share events, photos, accomplishments and more with EWI Wichita Membership in one convenient location! Email social media submissions to Pam Dinwiddie at the emails listed below.

pdinwiddie@txtav.com

Share your news & photos in the monthly *Connect*

Contact: Jessica Emrick

jessica.emrick@wichitamariott.com

Deadline for November Issue:
November 3, 2020

Upcoming Chapter Meetings

Third Wednesday of each month unless otherwise noted

October 21, 2020**Installation of Officers**

Flint Hills National Club

5:30 – 7:30 pm**November 18, 2020**

Hyatt Place at WSU

5:30 – 7:30 pm

December 2, 2020 Deadline
Boxing of Food for Colvin Elementary

Chapter Board Meetings

Second Tuesday of
each month until further notice

All members are welcome.

Contact Kristina Helm

kristina@westernassociates.com