

## *A Message From Your EWI President*



### **Kristina Helm | President**

Happy NOVEMBER! We are just a few short months away from 2021. I am thrilled to say we will end 2020 with some FUN events as a Chapter. If you do not feel comfortable attending events in person yet, we will allow for a Zoom option for the November meeting.

I am so EXCITED for our November Event- November 18<sup>th</sup> 2020 @ Hyatt Place @ WSU from 5:30-7:30pm. We have an AMAZING speaker lined up: Taryn Zwegardt- Co Founder & Director of Counseling Services and Community Outreach. I don't know about you, but I could certainly learn a lot from this event and am looking forward to hearing her speak. MENTAL HEALTH is a main focus this year, please join me for this AWESOME EVENT! RSVP now at

<https://www.squadup.com/events/ewi-of-wichita--november-chapter-meeting-1>

Thank you for allowing me the opportunity to be your President this year. I know this is going to be an AMAZING YEAR!

Wahoo!

Kristina Helm

[kristina@westernassociates.com](mailto:kristina@westernassociates.com)

## **2020-2021 Officers & Directors**

### **President**

Kristina Helm  
Western Associates

### **Vice President**

Davna Gould  
HealthCore Clinic,

### **Secretary**

Lori Armstrong  
Derby Plaza Theaters

### **Treasurer**

Kathy Armbruster  
Allen, Gibbs, and Houlik, LLC

### **Sergeant-at-Arms**

Sydney Tuttle  
Delta Dental of Kansas, Inc.

### **Directors-at-Large**

Haley Hobbs, Butler County Community College  
Theresa Hogan, Stoutheart Financial

### **Fundraising Directors**

Annie Life, Wichita Baseball  
Mariah Regier, Sedgwick County Zoo

### **Communications Directors**

Allison Walden, Downing and Lahey Mortuary  
Jessica Emrick Davies, Wichita Marriott

### **Membership Directors**

Jan Baggett, Wichita Chamber of Commerce  
Valerie Brashears, City of Wichita

### **Programs Director**

Jessica Viramontez, Visit Wichita

### **Advisor**

Pam Dinwiddie, Textron Aviation



## Committee Updates



### Kathy Armbruster | Treasurer

The Financial Position of EWI Wichita as of 10/31/2020 is:

#### Chapter Operating Account:

10/1/20 Opening Balance: \$18,100.04

10/30/20 Reconciled Balance: \$18,267.43

#### Chapter BCDP Account:

10/1/20 Opening Balance \$3,223.28

10/30/20 Reconciled Balance \$3,223.28

#### MeriTrust Savings Account:

10/1/20 Opening Balance \$24,251.66

10/30/20 Reconciled Balance \$24,252.69

#### Ameriprise Endowment Account (Stoutheart Financial):

10/1/20 Opening Balance \$68,887.93

10/30/20 Reconciled Balance \$68,112.89

***Remember to send  
invoice payments  
to the new Treasurer!***

Kathy Armbruster  
Allen, Gibbs & Houlik, L.C.  
301 N Main St Suite 1700  
Wichita, KS 67202  
316-291-4139

**EWI Officers – 2020/2021**

President – Kristina Helm, Western Associates

Vice President/President Elect – Davna Gould, HealthCore Clinic

Treasurer – Kathy Armbruster, AGH, LLC

Secretary – Lori Armstrong, Derby Plaza Theaters

**EWI Directors- 2020/2021**

Sergeant-at-Arms – Sydney Tuttle, Delta Dental

Membership – Jan Baggett, Wichita Chamber of Commerce

And Valerie Brashears, City of Wichita

Programs – Jessica Viramontez, Visit Wichita

Director-At-Large – Haley Hobbs, Butler County Community College and Theresa Hogan, Stoutheart Financial

Communications – Allison Walden, Downing & Lahey Mortuary  
and Jessica Emrick Davies, Wichita Marriott

*Website:* De Nelson, City of Wichita & Tammy Voth, Textron Aviation

*Social Media:* Pam Dinwiddie, Textron Aviation

*Connect:* Jessica Emrick Davies, Wichita Marriott

Fundraising – Mariah Regier, Sedgwick County Zoo and

Annie Life, Wichita Baseball

Advisor – Pam Dinwiddie, Textron Aviation

Hey Gorgeous, Time for a Mental Health Check!

Don't neglect Self Care! Are you dealing with infertility or Postpartum Depression issues? Are you facing the Holidays after the loss of a loved one? Are you overwhelmed with Zoom meetings & home school children? Work life balance can be a challenge for us all regardless of our children's age.

**November 18, 2020**  
**Hyatt Place @ WSU**  
**5:30pm-7:30pm**

**Speaker:**

**Taryn Zweygardt, LMSW**  
**Co-founder & Director of**  
**Counseling Services & Community Outreach**





The work at The Village, reduces stigma by building awareness, improving quality care by educating mental health providers, and providing direct service for those with limited resources. The group is dedicated to providing individual and group support services specifically to mothers suffering from postpartum depression and anxiety, or other mental health complications related to infertility, pregnancy loss, and/or infant loss. If you know someone who might benefit from therapy, bring them to the November meeting!

Speaker: Taryn Zweygardt, LMSW  
Co-founder & Director of  
Counseling Services & Community Outreach  
**Licensed Master Level Social Worker**



5:30pm Social at Hyatt Place @ WSU  
[4703 E. 19th Street North, Wichita, Kansas,  
United States, 67208](#)







Kristina and Clint Helm celebrated the birth of their daughter, Presleigh Grae born August 31<sup>st</sup> at 7:50am. Presleigh weighed 9lbs. 9 oz. and was 20" long at her delivery!



Allison & Tyler Walden celebrated birth of their baby boy, Joseph "Joey" Parker born October 8 at 9:42am.

Joey weighs 8 pounds 2 ounces and is 21.25 inches long.

Allison and Joey are doing well!



**EWI Corporate hosts a free monthly Professional Development webinar available to all EWI members?**

## **DECEMBER PROFESSIONAL DEVELOPMENT WEBINAR**

**Save the date: WEBINAR - Leading with Clarity & Confidence (even from your living room)**

**December 1, 2020**

**3:00 PM ET / 2:00 PM CT**

### **Description**

When we made our 2020 goals, we certainly didn't plan for a pandemic to impact how and where we work and lead. Leading from your living room doesn't need to hinder your ability to show up as the best version of you. Join us for a free webinar to learn simple strategies to lead as your most clear and confident self, even while working remotely.

This webinar will provide you practical tools to:

- Reveal your leadership values and brand and use them to advance your career
- Shift from stalling and into creativity and coach your teams to do the same
- Overcome the fears that keep you from influencing others as your best self
- Influence with clarity and confidence, even while working from your living room

Executive Women International® brings together key individuals from diverse businesses for the purposes of:

**Connections** - Promoting member firms

**Careers** - Enhancing personal and professional development

**Community** - Encouraging community involvement

**DO YOU HAVE A NEED?** Are you in the market looking for gift ideas for Christmas (movie tickets, zoo membership, etc.) or a particular service?... Dental Insurance, Event Venues, Hotel, CPA, Financial planning, Death prearrangements, etc... **STOP & SHOP "FIRST"** with your EWI Sisters!!



EWI of Wichita is a member of the Wichita Regional Chamber of Commerce. The Chamber's purpose statement is: Success for our members, Leadership for our community and Prosperity for our region. That purpose drives the Chamber to work hard every day to help build a great climate for our business community. There are many benefits of being a Chamber member, but I'd like to highlight a few that might be the most relevant to our EWI representatives.

The Chamber publishes a weekly eSynergy email newsletter that promotes Chamber members, highlights upcoming events and other news. They also publish the Advocate newsletter that gives updates on all things important to business that the Chamber advocates for. Anyone of our EWI members can sign up for the Chamber's publications. Below are the instructions.

- To sign up for the Chamber's publications, fill out the form at <https://www.wichitachamber.org/main/contact/>.

EWI members are also eligible to request login credentials that will allow you to do the following:

- Represent EWI at Chamber events – representatives of Chamber Members can access members-only events and reduced pricing for other events (including networking and educational opportunities)
- View videos in the Video Library
- Submit EWI events to the community calendar (events for non-Chamber Members are not eligible for posting)

If you don't already have a login through your company, you can request a login through EWI's Chamber membership by contacting Rebecca Saxton, Membership Data Manager, at [rsaxton@wichitachamber.org](mailto:rsaxton@wichitachamber.org). Include your:

- First & last name
- Email
- Company
- Job title
- Phone number

I hope you find this information helpful and if you have any questions, please contact Jan Baggett at [jbaggett@wichitachamber.org](mailto:jbaggett@wichitachamber.org)





# COLVIN ELEMENTARY

## Food Drive



This year's event will look a little different but "there is more of a need now, than ever before" Colvin's Social Worker states. Due to COVID-19 we kindly ask you to donate complete food boxes for this event (partner with friend). Boxes will be distributed at the November meeting. Boxes must be returned prior to or at December Chapter Meeting which will be held at the Marriott.

- 2 (3lb Boxes) Spaghetti
- 1 (67oz) Spaghetti Sauce
- 1 (16 oz bag) Egg Noodles
- 1 bag Dry Beans
- 4 boxes Macaroni & Cheese
- 1 (28oz jar) Peanut Butter
- 1 (30oz jar) Jelly
- 4 cans Vienna Sausages
- 6 (14.5 oz) canned vegetables
- 4 packets Instant Mashed Potatoes
- 1 box (10 packets) Oatmeal
- 4 (26oz cans) Cream of chicken/mushroom
- 4 (10oz cans) Canned Chicken
- 1 (2 lb bag) Long Grain White Rice
- 2 packets Instant Spanish Rice
- 2 cans Pork & Beans
- 2 boxes Tuna or Chicken Helper
- 10 packages Ramon Noodles
- 4 (4oz cans) Tuna
- 1 (6pack) Shelf Stable Milk

Questions, please contact:

Davna Gould [dgould@healthcoreclinic.org](mailto:dgould@healthcoreclinic.org)

Kristina Helm [kristina@westernassociates.com](mailto:kristina@westernassociates.com)

## **COLVIN FOOD DRIVE INFORMATION!**

At our November 18<sup>th</sup> Event Darna Gould and Kristina Helm will have boxes available to send with you for the Colvin Elementary Food Drive. Kristina is EXCITED to see what we do as a chapter this year for the AMAZING families at Colvin Elementary. SPECIAL REMINDER: we request FULL BOXES be delivered to the Marriott

If you are unable to attend the November 18th meeting please email [kristina@westernassociates.com](mailto:kristina@westernassociates.com) and/or Darna Gould [dgould@healthcoreclinic.org](mailto:dgould@healthcoreclinic.org) and they will help arrange a time to give you the empty box(es) you need. Please make arrangements with whom you want to share boxes with now, so that you are ready to go when we distribute empty boxes for you to fill at the November 18th meeting.

### **ALL BOXES ARE DUE TO THE MARRIOTT BY DECEMBER 2, 2020!!!**

We will have our DECEMBER MEETING on Wednesday, December 2nd at 5:30pm at the Wichita Marriott. We will help load all boxes into trucks and then finish with a plated meal and wine exchange. Don't forget to wear your funniest **CHRISTMAS SWEATERS & MASKS TO THIS MEETING!!!** We want to show our holiday cheer and have some **FUN!** The Squad Up Link for the December meeting is coming. It will arrive in a separate email.

### **Drop off information for FULL Boxes of Food prior to DECEMBER 2nd:**

Drop Off at Wichita Marriott 9100 Corporate Hills Drive, behind the Corporate Hills post office. Jessica Emrick Davies is in the office on Monday, November 30<sup>th</sup> and Tuesday, December 1<sup>st</sup> from 9:30am to 4:30pm. Her direct line is 316-462-3164. You can call when you are on your way or shoot her an email ([jessica.emrick@wichitamariott.com](mailto:jessica.emrick@wichitamariott.com)) to tell her what day you are dropping off. If it's after hours.....you can drop it off at the front desk and ask them to place in her office. Please notify her either way so she may follow up on anything dropped off after hours.





## October's Installation of Officers was hosted at Flint Hills National Golf Club



## LCAM Spotlight –

The Corporate President, each year, selects a chapter from the organization that exemplifies the spirit of the organization, has accomplished a goal with phenomenal results, has embraced the vision and mission of what EWI stands for, OR has just simply done an awesome job this year!

Our chapter walked away this year with a very coveted leadership award! The Tillie Award!

Pam Dinwiddie and her board of directors did a fabulous job this year leading the Chapter. Felicia Senter, EWI Corporate President for 2019-2020, was impressed with how our chapter quickly moved from traditional chapter meetings to virtual Zoom meetings due to COVID and appreciated that Pam invited the entire corporate board to participate in our Zoom meetings. The Wichita chapter had the highest increase in membership this year, out of 38 chapters across the USA and Canada! Kudos to the membership directors Jan Baggett with Wichita Metro Chamber of Commerce & Theresa Hogan with Stoutheart Financial! Great job!

Pam handed it over to Kristina at the October meeting to hold during her year of service to the group!







### Wichita Chapter's First 3 EWI Presidents:

Mary Williams – 1970  
The Coleman Company\*

Wanda Lee Zuercher – 1971  
Love Box Company, Inc.\*

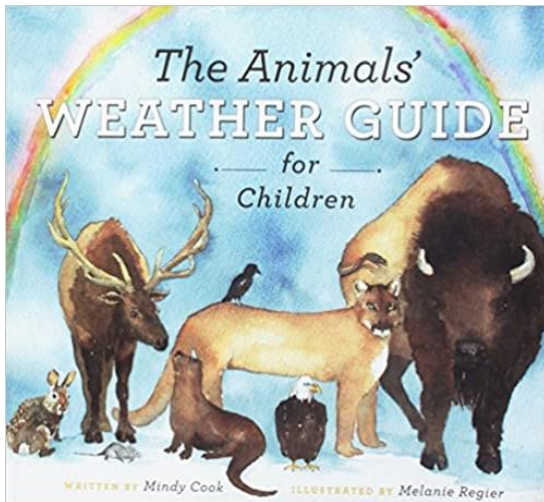
Dorothy Johansen – 1972  
Cessna Aircraft Company\*

According to Veronica Weeks, 1955 INK (EWI's first magazine) editor, "The Tillie Award was the brainchild of Past National President, Ruby Sorber, of Payne Heating Company, Los Angeles Chapter (who served the organization during 1951-1952.) She recognized the need for an incentive to improve the general quality of the Chapter Notebooks, and to provide more avenues of contact and information between the Chapters and Corporate Office."

Each year a national committee was appointed to judge the Chapter Notebooks. Verona stated the awarding of the Tillie was one of the most anticipated moments of the National Convention. In commemoration of EWI's 70th Anniversary, the Corporate Board felt it fitting to resurrect the Tillie Award at this important milestone in EWI history. Tillie was first awarded in 1951 to EWI of Las Vegas and the final award was presented in 1971 to EWI of Wichita. Tillie was awarded for the finest Chapter reporting; Wendy Cowley, 2007-2008 Corporate President, modified the award to include recognition for best practices.

With approval and support of the Corporate Board, it was decided that Tillie would be awarded based upon review of Chapter PULSE newsletters, visits with Chapters, and conversations with the membership. The Corporate Board looked for a Chapter doing something big, exciting, and cutting-edge for the reinstatement of the Tillie.

## Events – 2020-2021 Reading Rally



### EWI Annual 3<sup>rd</sup> Grade

### Reading Rally

Has been moved to the Spring of 2021  
at Colvin Elementary School's request

**Colvin Elementary School**  
**2820 S. Roosevelt**

A long time ago, when the world was young, Father Time and Mother Nature talked about how to parent the earth, sea and sky. They decided that Father Time would be in charge of sunrises, sunsets, tides, waves, hours, minutes and seconds. Mother Nature would be in charge of the climate and the changing seasons, including flowers blooming, grass growing, wheat ripening, and the leaves turning colors. Mother Nature decided when to cause the winds to blow, the rain to fall, and when the majestic storm clouds would build into hurricanes and turn into tornadoes, but Father Time decided how long each one could last before it was to pass. The animals learn how to protect and care for themselves in different types of weather and animals always know about the changes in weather before we do. We can learn from them! Let the animals' instinctive behaviors teach you how to prepare for the weather and to keep you safe.

Mindy East will donate a set of books to the school library and the classroom. She will give everyone a bookmark with items for an emergency preparedness kit.

She has been written up in The Washington Post and endorsed by AccuWeather & the Post.



Severe weather season begins in April and runs through June! Personal safety, responsibility and self-reliance can be top of mind presence for the students.

**Everyone is Welcome! Contact Nancy Umholtz**  
**([numholtz@deltadentalks.com](mailto:numholtz@deltadentalks.com))**

**or Jessica Emrick Davies for more information**  
**on Sponsorship Opportunities for the Reading**  
**Rally ([jessicaemrick@wichitamariott.com](mailto:jessicaemrick@wichitamariott.com))**



## RECOGNITION

*Did you see the EWI Firm- Berry Companies, Featured on KPTS?*



*If you missed it, you can view it on youtube.com*

*<https://www.youtube.com/watch?v=wkqDkqQMsmU&t=44s>*

**One-On-One with Victor Hogstrom - Fred Berry -  
KPTS aired the program on October 29<sup>th</sup> at 7:30 p.m.  
Berry Companies founder Fred Berry talked about the importance that  
faith and kindness have played in his business and personal success.**



## RECOGNITION

*Did you see the EWI Firms Featured in the Wichita Business Journal?*

### WICHITA STATE UNIVERSITY FOUNDATION:

Executives of the Year:

Dr. Elizabeth King, President and CEO

Pam Dinwiddie with Textron Aviation has been asked to serve on the EWI Corporate Member Retention and Recruitment Committee

Our November 18<sup>th</sup> event will be available via **ZOOM** as well as, in person. If you choose the Zoom option you will still need to sign up on the Squad Up Link listed below and choose the \$20.00 option for ZOOM. If you are coming in person, please sign up at the squad up link listed below and choose the \$30.00 in person option.

We hope this allows everyone to be a part of events during these times. If you have any questions, please do not hesitate to email

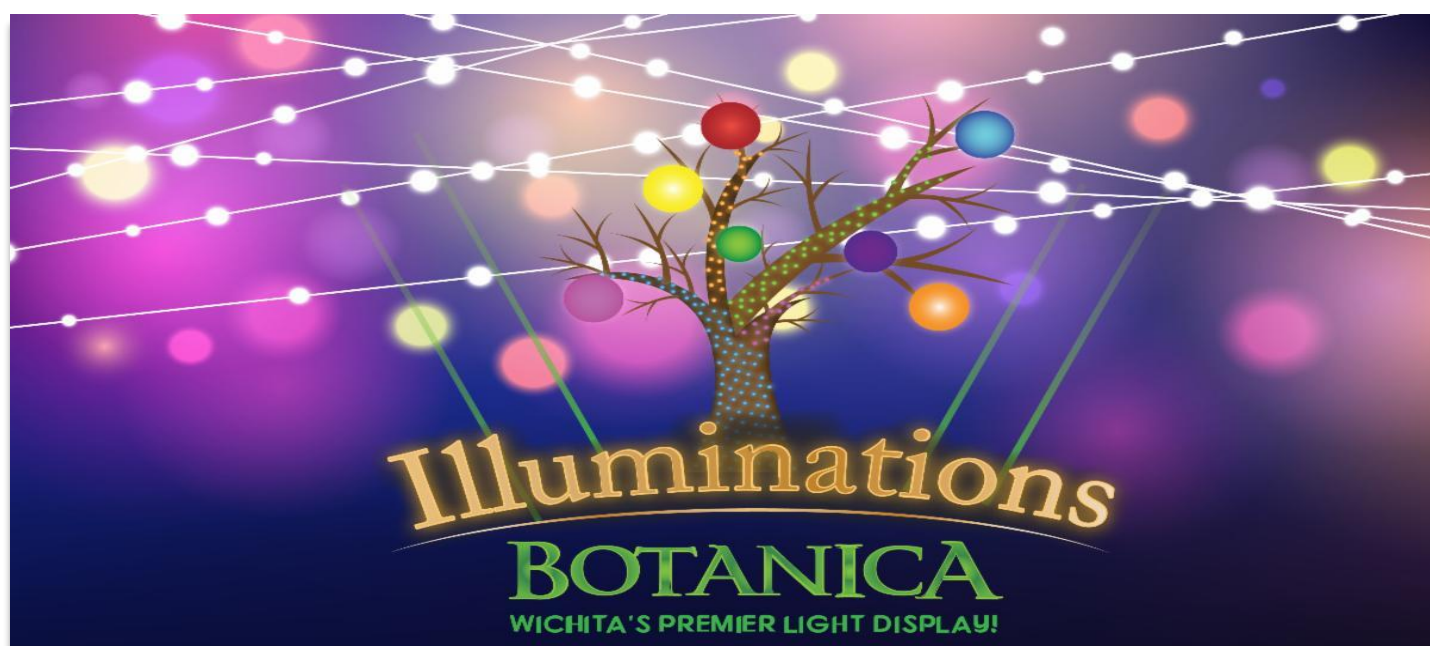
Kristina@westernassociates.com or call Kristina at 316-712-3053



[squadup.com/events/ewi-of-wichita--november-chapter-meeting-1](https://squadup.com/events/ewi-of-wichita--november-chapter-meeting-1)



## Wichita Community Events



**Illuminations**  
**BOTANICA**  
WICHITA'S PREMIER LIGHT DISPLAY!

<b>WALK THRU</b>	<b>AND</b>	<b>DRIVE THRU</b>
<b>Nov 14 - Jan 9</b>		<b>Nov 14 - Jan 30</b>
<b>\$13 Adults</b>		<b>Sunday - Thursday</b> <b>\$20 per car</b>
<b>\$9 Children &amp; Members</b>		<b>Friday - Saturday</b> <b>\$25 per car</b>
<b>2 &amp; under are FREE</b>		

You MUST go to [botanica.org](http://botanica.org) to pre-purchase your tickets for Illuminations with a selected date and time slot. NO tickets will be sold at the door. There is also a limited number of guests for each night due to keeping people safe and social distanced this year so many nights will sell out. Safety procedures, changes due to Covid-19, and other frequently asked questions can be found on our website.

From MyEWI Community on Corporate Website  
**Let the excitement begin! LCAM 2021 - Albuquerque, NM**



From the desk of.....

Charlie Rosenquist, EWI Corporate Secretary/Treasurer  
2021 LCAM Chair-EWI of Chattanooga-BlueCross BlueShield of TN

My goal is to ensure that all possible ways of sharing our journey to LCAM 2021 are covered! That includes me stepping out of my comfort zone and begin using some of the amazing tools EWI provides....including this community. I am looking forward to everyone assisting in building this community so we can receive feedback and suggestions as we continue to prepare for LCAM 2021! Let's begin with the few things that we have already shared:



When: September 16-18, 2021

Where: Albuquerque, New Mexico

Venue: Sheraton Albuquerque Uptown, 2700 Louisiana Blvd, NE, Albuquerque, NM 87110

LCAM Registration cost:

\$650 Early Bird Registration (March 1, 2021 – June 30, 2021)

•\$750 Regular Registration (July 1, 2021 – September 16, 2021)

**New This Year:**

**Chapter Incentive for Leadership Caucus:**

- Leadership Caucus will be open to any member who would like to pay the \$200 fee for Early Bird Registration or \$250 for registrations after July 7, 2021.
- To encourage Chapters to have their members to register early and through the Chapter, we are offering the following Chapter Incentive for Chapters who register during the EARLY BIRD REGISTRATION DATES:
  - \$200 each for 1 member
  - \$150 each for 2 members
  - \$125 each for 3 or more members
- **Registration for Chapter Incentives must go through Corporate office.**

Would you like us to post a Professional recognition via a chapter email, Connect article or announce it on our EWI social media? If so, please send those items to President Kristina Helm and copy the Communications Director, Allison Walden so that they can be shared!



### Have you met Cortney Ihde?

She supports the  
Corporate board of directors,  
and all EWI chapters!



### November Birthdays

**November 9 ... Lori Armstrong**  
**November 12 ... Barb Boulanger**  
**November 13....Tammy Voth**

Executive Assistant/Office Manager,  
Executive Women International  
Work: 262.269.5625  
Personal: 262.443.0814  
[cortney@ewiconnect.com](mailto:cortney@ewiconnect.com)



We post the chapter meeting minutes on our EWI Wichita website at  
<https://ewiwichita.org/>

#### ABOUT EWI

Established in 1938, EWI is a non-profit organization with more than 1,900 member firms and 2,200 representatives in major cities throughout the United States and Canada.

EWI brings members together to promote member firms, to enhance personal and professional development, and to encourage community involvement.

As a premier organization for networking and leadership development for today's business professionals, EWI offers professional development through its Academy of Leadership, scholarships, online learning, and philanthropic initiatives with a focus on literacy.

EWI also provides over 600 board positions to women on the corporate and chapter level annually. For more information, visit [ewiconnect.com](http://ewiconnect.com).



## CORPORATE OFFICE UPDATES



Our Giveback Code:

**GIVEBACK0EFF**

<https://www.kendrascott.com/>

## Kendra Scott Fundraiser for EWI Corporate November 20 & 21

EWI Corporate is having a Kendra Scott fundraiser just in time for all of your holiday shopping!

### Mark Your Calendars!

Join us on Friday, November 20 and Saturday, November 21, 2020 as we participate in the Kendra Scott Gives Back Program. The EWI BCDP Program will receive 20% of the overall sales from the event. Proceeds will be used to fund the Corporate Reading Rally and Corporate ASIST Scholarships for 2021.

## kendra's GIFT PICKS

My latest go-to's  
to give – and get!



## Shop for Good Online & In-Store!

### HOW TO ENTER YOUR GIVEBACK CODE

1

Click on the bag in the top right corner of your screen.

2

You'll see a bar that says "Enter Coupon Code" both in your cart and at checkout.

3

Insert your giveback code at one of the two places, then hit "Apply".





CONNECTIONS | CAREERS | COMMUNITY

## Corporate Connections

### JOIN THE CONVERSATION!



facebook.com/ewicorp



@ewicorporate



@ewicorporate



pinterest.com/ewicorporate

## Board of Directors

Our Corporate Board members lead and guide our organization and represent Chapters from across the country. Below is our 2020-2021 board.



**CORPORATE PRESIDENT  
KRISTI EMMONS JONES**

Amare Global

EWI of Memphis

[kemm64@gmail.com](mailto:kemm64@gmail.com)



**PRESIDENT-ELECT  
CHRISTINE HEALY**

The Printer Inc.

EWI of Des Moines

[chealy1142@gmail.com](mailto:chealy1142@gmail.com)



**SECRETARY / TREASURER  
CHARLIE ROSENQUIST**

BlueCross BlueShield of  
Tennessee

EWI of Chattanooga

[charlie\\_rosenquist@bcbst.com](mailto:charlie_rosenquist@bcbst.com)



**DIRECTOR  
KATHY SCOTT**

Balls Foods

EWI of Kansas City

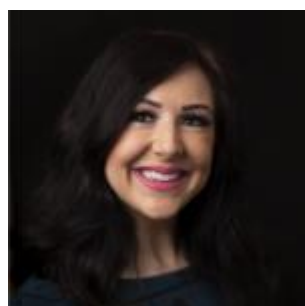
[46director@ballsfoods.com](mailto:46director@ballsfoods.com)



**DIRECTOR CHERYL HOLMES  
CASTO**

EWI of Columbus

[cholmes@castoinfo.com](mailto:cholmes@castoinfo.com)



**DIRECTOR CHRISTINE  
LAIRD**

Greater Oklahoma  
City Chamber of  
Commerce

EWI of Oklahoma City

[claird@remergeok.org](mailto:claird@remergeok.org)



**DIRECTOR MARJI ZAMORA**

Speedy Printing

EWI of Houston

[marji@speedyprintingtx.com](mailto:marji@speedyprintingtx.com)



**ADVISOR  
FELICIA J. SENTER**

Tulsa Tech

EWI of Tulsa

[felicia.senter@tulstatech.edu](mailto:felicia.senter@tulstatech.edu)

## EWI of Wichita Social Media:



EwiOfWichita



ewiwichita



ewiofwichita



ewiofwichta

Share events, photos, accomplishments and more with EWI Wichita Membership in one convenient location! Email social media submissions to Pam Dinwiddie at the emails listed below.

[pdinwiddie@txtav.com](mailto:pdinwiddie@txtav.com)

Share your news & photos in the monthly *Connect*

Contact: Jessica Emrick

[jessica.emrick@wichitamariott.com](mailto:jessica.emrick@wichitamariott.com)

Deadline for December Issue:  
December 3, 2020

**Upcoming Chapter Meetings**

Third Wednesday of each month unless otherwise noted

**November 18<sup>th</sup> , 2020**

Hyatt Place at WSU

**5:30 – 7:30 pm****December 2<sup>nd</sup> , 2020**

Wichita Marriott

Corporate Hills Ballroom.

**Loading of Boxed Food for Colvin  
Elementary****5:30 – 7:30 pm****Chapter Board Meetings**

Second Tuesday of  
each month until further notice

All members are welcome.

Contact Kristina Helm

[kristina@westernassociates.com](mailto:kristina@westernassociates.com)