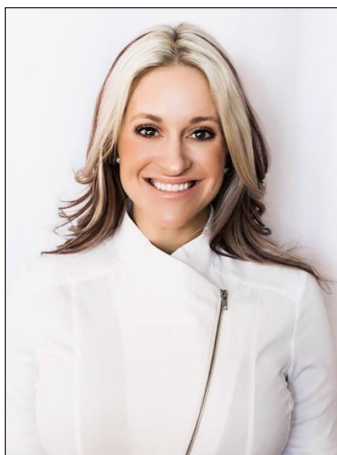


Wichita EWIConnect

EWI Wichita ... Chartered 1970 ... January 2021

A Message From Your EWI President



Hello!!! I am so thankful for the start of an AMAZING NEW YEAR! So excited to start fresh! This month we are going to host the Board and Brush event on January 20th from 5:30pm-7:30pm. I hope that you will join us at this event! I sent an email on 1/5/21 with the squad up link to register for this FUN EVENT! Very rarely do we all get to get together so I thought this would be a great way to have some FUN and spend time with each other to kick off the 2021 year!

This would be a great meeting to invite a guest to come and meet our AMAZING CHAPTER of women!

We have an amazing opportunity in 2021 to make a difference in our community as well as within our chapter. If your business is doing anything that you would like to highlight within our chapter, or if your business has a need please email me and let me know so that we can work together as a chapter to help support and be there for our member firms. Please email me directly and I will help distribute information to our chapter.

Thank you for allowing me the opportunity to be your President this year. I know this is going to be an AMAZING YEAR!

Wahoo!

Kristina Helm kristina@westernassociates.com 316.712.3053

2020—2021 Officers & Directors

President

Kristina Helm
Western Associates

Vice President

Davna Gould
HealthCore Clinic

Secretary

Lori Armstrong
Derby Plaza Theaters

Treasurer

Kathy Armbruster
Allen, Gibbs, and Houlik, LLC

Sergeant-at-Arms

Sydney Tuttle
Delta Dental of Kansas, Inc.

Directors-at-Large

Haley Hobbs, Butler County Community College
Theresa Hogan, Stoutheart Financial

Fundraising Directors

Annie Life, Wichita Baseball
Mariah Regier, Sedgwick County Zoo

Communications Directors

Allison Walden, Downing and Lahey Mortuary
Jessica Emrick Davies, Wichita Marriott

Membership Directors

Jan Baggett, Wichita Chamber of Commerce
Valerie Brashears, City of Wichita

Programs Director

Jessica Viramontez, Visit Wichita

Advisor

Pam Dinwiddie, Textron Aviation

President's Message p. 1 ... Committee Reports p. 2 ... Did you Know? January Meeting, Community Events, Reading Rally, Spotlight, Corporate Updates/Directors/Officers p. 3-12 Birthdays & Corporate Info p. 13-16

DO YOU HAVE A NEED? Are you in the market looking for a particular service?
Dental Insurance, Event Venues, Hotel, CPA, Financial Planning,
Death Prearrangements, etc? “STOP & SHOP FIRST” with your EWI sisters!!



***Remember to send
invoice payments
to the new Treasurer!***

Kathy Armbruster
Allen, Gibbs & Houlik, L.C.
301 N Main St Suite 1700
Wichita, KS 67202
316-291-4139

Chapter Operating Account:

12/1/20 Opening Balance: \$15,327.82

12/31/20 Reconciled Balance: \$14,916.42

Chapter BCDP Account:

12/1/20 Opening Balance \$3,223.28

12/31/20 Reconciled Balance \$3,223.28

MeriTrust Savings Account:

12/1/20 Opening Balance \$24,253.68

12/31/20 Reconciled Balance \$24,254.74

Ameriprise Endowment Account (Stoutheart Financial):

12/1/20 Opening Balance \$73,019.47

12/31/20 Reconciled Balance \$74,951.93



EWI Corporate hosts a free monthly
Professional Development webinar
available to all EWI members?

FEBRUARY PROFESSIONAL DEVELOPMENT WEBINAR

Save the date: WEBINAR – Building your Business with Trust in a Dynamic Environment



Tuesday, February 2, 2021
3:00 PM ET / 12:00 PM PT

Presenter: Roseann Freitas
Hawaii Marketplace Manager

During challenging times, it is even more important to focus on trust, honesty, transparency, and integrity to survive. Learn how to be a trustworthy company, and the impact it can have on your bottom line. Members will learn the components of trust, why trust is essential, and how to be a trustworthy company.

Roseann Freitas is the Hawaii Marketplace Manager for the Better Business Bureau. Northwest + Pacific. As the face of the BBB in Hawaii, Roseann's role includes promoting trust in the marketplace via media, strategic relations, business, and consumer education. She loves assisting trustworthy companies and highlighting unethical business practices. Roseann has a Bachelor of Science in Business Administration with a concentration in Accounting from Mount Olive College in North Carolina and volunteers with Executive Women International Honolulu Chapter and the National Kitchen and Bath Association Aloha Chapter.

Executive Women International® brings together key individuals from diverse businesses for the purposes of:

Connections - Promoting member firms

Careers - Enhancing personal and professional development

Community - Encouraging community involvement



EWI of Wichita is a member of the Wichita Regional Chamber of Commerce. The Chamber's purpose statement is: Success for our members, Leadership for our community and Prosperity for our region. That purpose drives the Chamber to work hard every day to help build a great climate for our business community. There are many benefits of being a Chamber member, but I'd like to highlight a few that might be the most relevant to our EWI representatives.

The Chamber publishes a weekly eSynergy email newsletter that promotes Chamber members, highlights upcoming events and other news. They also publish the Advocate newsletter that gives updates on all things important to business that the Chamber advocates for. Anyone of our EWI members can sign up for the Chamber's publications. Below are the instructions.

EWI members are also eligible to request login credentials that will allow you to do the following:

- To sign up for the Chamber's publications, fill out the form at <https://www.wichitachamber.org/main/contact/>.
- Represent EWI at Chamber events – representatives of Chamber Members can access members-only events and pricing for other events (including networking and educational opportunities)
- View videos in the Video Library
- Submit EWI events to the community calendar (events for non-Chamber Members are not eligible for posting)

If you don't already have a login through your company, you can request a login through EWI's Chamber membership by contacting Rebecca Saxton, Membership Data Manager, at rsaxton@wichitachamber.org. Include your:

- First & last name, Email, Company, Job Title and Phone Number.

I hope you find this information helpful and if you have any questions, please contact Jan Baggett

at jbaggett@wichitachamber.org

Executive Women International Launches New Website December 2020**CHECK YOUR EMAIL! YOU SHOULD HAVE RECEIVED THIS!!!**

We are thrilled to announce that Executive Women International has launched a new website at www.ewiconnect.com. Our goal with this newly designed website is to create an enhanced experience for our trusted and valued members. We know you will enjoy the new website with its fresh look and easy to access information. This portal will also serve as an excellent source of information for prospective members who visit our website. This new website will provide you with increased value and benefits including:

- A searchable membership directory
- Online Event Calendar
- Ability to edit your profile and pay membership dues online
- Ability to search by Chapter
- Integration with the MyEWI Online Community with Single Sign On (SSO) capability
- And more!

Please take a couple of minutes to activate your account by following the three simple steps below.

Step 1: Go to <http://www.ewiconnect.com>

Step 2: Find the “Sign In” box in the center of the homepage. The first field is your username, the second field is

for your password. Your username is [j](#)(YOUR EMAIL ADDRESS) and the password **EWI2020**

Step 3: Once you’ve signed in, please create a new username (if desired) and update your password.

Now that you’re in, you can make changes to your profile, register for upcoming events, and have a look around the website!

We hope you find the new website with a fresh look, easy to access information and we also wish to establish this portal as a source of information for those who visit our site.

For any questions, suggestions, feedback, or comments, please e-mail us at ewi@ewiconnect.com

EWI-WICHITA CHAPTER

JANUARY MEETING

Come enjoy an evening of DIYing with your fellow EWI gals!

Wednesday, January 20th

5:30 – 7:30 PM

Board & Brush

1108 E Douglas Ave.

**Please bring your own
beverages/wine/drinks Appetizers and finger
foods will be provided**

**Please RSVP by January 15th using the Squad Up
link:**

**<https://boardandbrush.com/wichita/events/ewiwichita>
chapter/ *Type in our access code: **EWIWICHITA*****

***You will have to preselect the board you wish to
create when you register!***



RECOGNITION

Did you see the EWI Firms Honored this month?

2020 SCK MLS President's Award:



Reece Nichols

**Dawn Truman, General Manager
of the Commercial Division**

South-Central Kansas MLS 2020 President's Award
for outstanding service in the real estate industry

Dawn Truman is a strong leader and has a passion to help her agents in any way she can.

Not only does she make our company better but she supports and furthers our industry as well through her positions at the Kansas CCIM Chapter and SCK MLS

EWI Past President

RECOGNITION

Did you see the EWI Firms Featured in the Wichita Business Journal?

Excellence in Health Care Administration

Teresa Lovelady

President/CEO, HealthCore Clinic



What are you doing to mentor women in your industry? As the CEO at HealthCore Clinic, I actively engage with staff and ask about their 10-year plan. I strongly encourage continued education and professional development especially for younger women. I create opportunities for individuals to experiment and take calculated risks to advance their professional careers. I also serve as a positive role model and share my professional challenges and successes openly. I have found that this allows others to connect in an authentic way while providing the opportunity to share meaningful feedback and support for each other. This type of mentor/mentee relationship allows both of us to exchange roles and grow as a mentor and mentee.

THE CHUNG REPORT featured individuals leading the push toward a better Wichita.

Junetta Everett, Vice President of Professional Relations, Delta Dental of Kansas



Junetta is used to firsts. She was the first African-American in Wichita State's dental hygiene program. She was also one of the first employees of Delta Dental, which now boasts over 100 employees. She was the first in her family to graduate college, as well, ending a cycle of poverty and replacing it with courage and tenacity.

Everett is also the first African-American to lead the Wichita Regional Chamber of Commerce. She started the first black student union at her community college and now leads Delta Dental as vice president of professional relations. She has also lent her perspective to boards and organizations including the Kansas Leadership Center, Oral Health Kansas Dental Champion, the Wichita State National Advisory Council, Kansas Health Foundation, Exploration Place, Wesley Medical Center and, finally, the Wichita Regional Chamber of Commerce.



LCAM²⁰²¹_{ewi}
Reach Renew Reimagine

LEADERSHIP CONFERENCE & ANNUAL MEETING

Albuquerque, New Mexico | Sheraton Uptown

REGISTRATION OPENS
MARCH 1, 2021



Some EWI meetings will be available via **ZOOM** as well as in person. If you choose the Zoom option you will still need to sign up on the Squad Up Link and choose the \$20.00 option for ZOOM. If you are coming in person, please sign up at the squad up link listed below and choose the \$30.00 in person option. We hope this allows everyone to be a part of events during these uncertain times. If you have any questions, please do not hesitate to email Kristina@westernassociates.com or call Kristina at 316-712-3053



Have you met the New Replacement Representative?

Allison Le Bio

Allison's passion is educational architecture, especially at the high school level. It is important to Allison to understand just how her district clients want to educate their students so that the design reinforces that vision. She understands that all educational buildings are unique and represent community at the most fundamental level. For her, designing for school districts is the opportunity to create timeless structures that students remember even years later.



Shannon Bohm is her Executive and was recognized recently in the Wichita Business Journal.



EXECUTIVES OF THE YEAR SERIES IN THE WICHITA BUSINESS JOURNAL

When asked, "What advice do you have for younger executives who want to run companies?"

She replied: Be curious and a good listener. Observe leaders that you value and learn from their actions. Ask for feedback-enjoy the positive, learn from the not-so-positive. Trust your instinct. Realize that there is more than one path to success



Wichita Community Events



Please submit any volunteer needs your company may have

to Jessica.Emrick@wichitamariott.com and it will be posted in our monthly newsletter. We have a great resource to be able to spread the word with our members and companies.

Looking for volunteer opportunities to fill some time or just have the desire to help out? Look in this corner each week for ways to help out in your community!

Illuminations
BOTANICA
WICHITA'S PREMIER LIGHT DISPLAY!

WALK THRU	AND	DRIVE THRU
Nov 14 - Jan 9		Nov 14 - Jan 30
\$13 Adults		Sunday - Thursday \$20 per car
\$9 Children & Members		Friday - Saturday \$25 per car
2 & under are FREE		

You MUST go to botanica.org to pre-purchase your tickets for Illuminations with a selected date and time slot. NO tickets will be sold at the door. There is also a limited number of guests for each night due to keeping people safe and social distanced this year so many nights will sell out. Safety procedures, changes due to Covid-19, and other frequently asked questions can be found on our website.



"I just really want you guys to know in a very personal way how you are blessing the people that receive the food boxes. It really means a lot!" *Julie Rinke, LMSW, LAC*
Social Worker-Colvin Elementary

Wichita Community Events



Colvin Elementary

Students, Teachers & Families that received food boxes over the Holiday Break sent thank you cards to the Wichita Chapter of EWI. Thank you to all the firms that donated food or money. Thank you to the ladies that boxed food at the December meeting and to those that dropped off the boxes at the school. It's a team effort! It's a great feeling to know we do make a difference in our community!



Happy Birthday to YOU!**January Birthdays**

January 14... Marcia Miller

January 18 ... Gina Hess

January 20...Connie Velghe

January 20...D'Ann Drennan

February Birthdays

February 3...Nancy Umholtz

February 6....Jordyn Ortega

February 12...Becky Hall

February 19...Jessica Viramontez

February 23....Mallory Minor

ABOUT EWI

Established in 1938, EWI is a non-profit organization with more than 1,900 member firms and 2,200 representatives in major cities throughout the United States and Canada.

EWI brings members together to promote member firms, to enhance personal and professional development, and to encourage community involvement.

As a premier organization for networking and leadership development for today's business professionals, EWI offers professional development through its Academy of Leadership, scholarships, online learning, and philanthropic initiatives with a focus on literacy.

EWI also provides over 600 board positions to women on the corporate and chapter level annually. For more information, visit ewiconnect.com



Executive Assistant/Office Manager

Cortney Ihde

Work: 262.269.5625

Personal: 262.443.0814

cortney@ewiconnect.com

DON'T FORGET

We post the chapter meeting minutes on our EWI Wichita website at: <https://ewiwichita.org/>



EWI Corporate

Recruitment & Retention

Christine Laird, ReMerge of Oklahoma City



Good morning all!

As reported in yesterday's January Connect, the corporate recruitment committee has re-launched the C3 campaign with new incentives! This year's campaign will run through August 31 with winners announced at LCAM. Below are some key details about the C3 campaign for your reference:

- 1 successful referral: Bronze - \$200 in chapter marketing monies
- 2 successful referrals: Silver - \$400 in chapter marketing monies
- 3 or more successful referrals: Gold - \$500 in chapter marketing monies

The Chapter that reaches gold status with the most referrals overall during the campaign will be declared the 'Ultimate Winner' and will receive guest speaker coverage (max value of \$500) and \$400 in Chapter marketing monies.

To qualify for the ultimate winner incentive a Chapter must reach gold status. If there is a tie for the ultimate winner incentive, the tiebreaker will be the Chapter that has the best retention percentage during the current fiscal year.

Recruitment committee co-chair Ashley Day has begun following up with chapters who submitted leads for C3 from the 2019 LCAM. We are eager to support your success in this year's campaign and promote growth across the organization.

Please don't hesitate to reach out to me with any questions about this year's C3 campaign: claird@remergeok.org.

Let's start working those referrals!

Christine Laird
Director of Learning and Continuing Care
ReMerge of Oklahoma City
Oklahoma City

EWI Corporate Board of Directors

Our Corporate Board members lead and guide our organization and represent Chapters from across the country. Below is our 2020-2021 board.



Corporate President
Kristi Emmons Jones
 Amare Global
 EWI of Memphis
 kemm64@gmail.com



President-Elect
Christine Healy
 The Printer Inc.
 EWI of Des Moines
 chealy1142@gmail.com



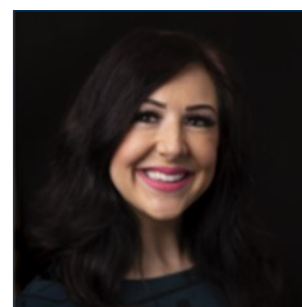
Secretary/Treasurer
Charlie Rosenquist
 Blue Cross/Blue Shield of TN
 EWI of Chattanooga
 charlie_rosenquist@bcbst.com



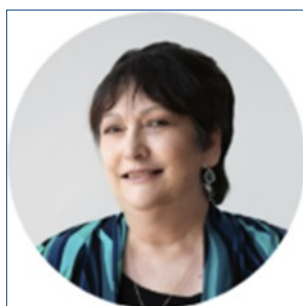
Director
Kathy Scott
 Balls Foods
 EWI of Kansas City
 46director@ballsfoods.com



Director
Cheryl Holmes
 CASTO
 EWI of Columbus
 cholmes@castoinfo.com



Director
Christine Laird
 Greater OKC Chamber
 of Commerce
 EWI of OKC
 claird@remergeok.org



Director
Marji Zamora
 Speedy Printing
 EWI of Houston
 marji@speedyprintingtx.com



Advisor
Felicia J. Senter
 Tulsa Tech
 EWI of Tulsa
 felicia.senter@tulsatech.edu

EWI of Wichita Social Media:

EwiOfWichita



ewiwichita



Ewiofwichita



ewiofwichita

*Share events, photos, accomplishments and more with EWI
Wichita Membership in one convenient location! Email social
media submissions to Pam Dinwiddie at pdinwiddie@txtav.com*

Share your news & photos in the monthly
Connect

Contact: Jessica Emrick
Jessica.emrick@wichitamarriott.com

Deadline for February Issue:
February 4, 2021

Upcoming Chapter Meetings

*Third Wednesday of each month
unless otherwise noted.*

January 20, 2021

Board and Brush
5:30pm-7:30pm

Chapter Board Meetings

*Second Tuesday of each month
unless otherwise noted.*

All members are welcome.

Contact Kristina Helm
Kristina@westernassociates.com