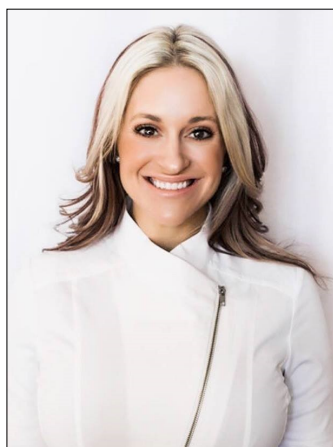


Wichita EWIConnect

EWI Wichita ... Chartered 1970 ... February 2021

A Message From Your EWI President



Hello!!! I cannot believe it is already FEBRUARY! WOW! I wanted to let all of you know how excited I am for our February event this month. We will be holding a FUN Speed Business Dating event in order for us to get to know businesses within our EWI chapter as well as each other. I hope you all can make this safe and socially distanced event at the Marriott. I think it will be a great opportunity for all of us. Connecting with each other as well as businesses within our chapter is such an AMAZING way to network.

In addition, if you know of anyone you want to invite to a EWI event to get to know more about us, please let me know and both Jan Baggett and myself will help you. Do not be afraid to talk about EWI with women of business. This is a great way for us to help grow our chapter in the future.

Wahoo!

Kristina Helm kristina@westernassociates.com 316.712.3053

2020—2021 Officers & Directors

President

Kristina Helm
Western Associates

Vice President

Davna Gould
HealthCore Clinic

Secretary

Lori Armstrong
Derby Plaza Theaters

Treasurer

Kathy Armbruster
Allen, Gibbs, and Houlik, LLC

Sergeant-at-Arms

Sydney Tuttle
Delta Dental of Kansas, Inc.

Directors-at-Large

Haley Hobbs, Butler County Community College
Theresa Hogan, Stoutheart Financial

Fundraising Directors

Annie Life, Wichita Baseball
Mariah Regier, Sedgwick County Zoo

Communications Directors

Allison Walden, Downing and Lahey Mortuary
Jessica Emrick Davies, Wichita Marriott

Membership Directors

Jan Baggett, Wichita Chamber of Commerce
Valerie Brashears, City of Wichita

Programs Director

Jessica Viramontez, Visit Wichita

Advisor

Pam Dinwiddie, Textron Aviation

President's Message p. 1 ... Committee Reports p. 2 ... Did you Know? January Meeting,
Community Events, Spotlight, Corporate Updates/Directors/Officers p. 3-11
Birthdays & Corporate Info p. 12-15

DO YOU HAVE A NEED? Are you in the market looking for a particular service?
Dental Insurance, Event Venues, Hotel, CPA, Financial Planning,
Death Prearrangements, etc? "STOP & SHOP FIRST" with your EWI sisters!!



**Remember to send
invoice payments
to the new Treasurer!**

Kathy Armbruster
Allen, Gibbs & Houlik, L.C.
301 N Main St Suite 1700
Wichita, KS 67202
316-291-4139

Chapter Operating Account:

1/1/21 Opening Balance: \$14,916.42

1/29/21 Reconciled Balance: \$15,655.23

Chapter BCDP Account:

1/1/21 Opening Balance \$3,223.28

1/29/21 Reconciled Balance \$3,223.28

MeriTrust Savings Account:

1/1/2 Opening Balance \$24,254.74

1/31/21 Reconciled Balance \$24,255.74

Ameriprise Endowment Account (Stoutheart Financial):

1/1/21 Opening Balance \$74,951.93

1/31/21 Reconciled Balance \$74,227.26

Executive Women International® brings together key individuals from diverse businesses for the purposes of:

Connections - Promoting member firms

Careers - Enhancing personal and professional development

Community - Encouraging community involvement



**EWI Corporate hosts a free monthly
Professional Development webinar
available to all EWI members?**

MARCH PROFESSIONAL DEVELOPMENT WEBINAR

**Save the date: WEBINAR – Your Energy is your POWER
Tuesday, March 2, 2021**



**Tuesday, March 2, 2021
3:00 PM ET / 12:00 PM PT**

Are you exhausted? Drained? Wiped out? Do you wonder to yourself, “How did my life get here?” In this one-hour virtual presentation, you will learn how to discover and leverage your special talents so that you rejuvenate yourself, gain more energy, and energize your life. Lisa M. Liszcz, Ph.D. found through her coaching and research that many professional women have lost the enthusiasm they once had for their careers. Many feel irrelevant and like they are “token” leaders. They don’t feel valued by their peers and upper management. Many women feel exhausted. They want to be more creative and autonomous. They want to help others, but they don’t have the time or energy to do so. This presentation is based on Dr. Liszcz’s best-selling book, *Feminine Emergence*. She will share how you can balance your energy for success and joy in your career and your life. Dr. Liszcz will outline what is missing from a life, team or organization that is out of balance.

You will learn her three secrets for success:

The Most effective way to have unencumbered and unlimited success in your career is to learn one thing that does not require you to take another course or get another degree. It's simple and will help you be more of who YOU are.

By eliminating 50% of what you're currently doing, you can live out the career and life of your dreams. You will at least double your confidence, energy, and sense of peace; and you will become a more authentic leader.

the key to creating the career and life you desire is to spend 10 minutes a day on one simple strategy that no one is talking about. It's easy, painless, and you can do it anywhere. It's just 10 minutes!



EWI of Wichita is a member of the Wichita Regional Chamber of Commerce. The Chamber's purpose statement is: Success for our members, Leadership for our community and Prosperity for our region. That purpose drives the Chamber to work hard every day to help build a great climate for our business community. There are many benefits of being a Chamber member, but I'd like to highlight a few that might be the most relevant to our EWI representatives.

The Chamber publishes a weekly eSynergy email newsletter that promotes Chamber members, highlights upcoming events and other news. They also publish the Advocate newsletter that gives updates on all things important to business that the Chamber advocates for. Anyone of our EWI members can sign up for the Chamber's publications. Below are the instructions.

EWI members are also eligible to request login credentials that will allow you to do the following:

- To sign up for the Chamber's publications, fill out the form at <https://www.wichitachamber.org/main/contact/>.
- Represent EWI at Chamber events – representatives of Chamber Members can access members-only events and pricing for other events (including networking and educational opportunities)
- View videos in the Video Library
- Submit EWI events to the community calendar (events for non-Chamber Members are not eligible for posting)

If you don't already have a login through your company, you can request a login through EWI's Chamber membership by contacting Rebecca Saxton, Membership Data Manager, at rsaxton@wichitachamber.org. Include your:

- First & last name, Email, Company, Job Title and Phone Number.

I hope you find this information helpful and if you have any questions, please contact Jan Baggett

at jbaggett@wichitachamber.org

Executive Women International Launches New Website December 2020

CHECK YOUR EMAIL! YOU SHOULD HAVE RECEIVED THIS!!!

We are thrilled to announce that Executive Women International has launched a new website at www.ewiconnect.com. Our goal with this newly designed website is to create an enhanced experience for our trusted and valued members. We know you will enjoy the new website with its fresh look and easy to access information. This portal will also serve as an excellent source of information for prospective members who visit our website. This new website will provide you with increased value and benefits including:

- A searchable membership directory
- Online Event Calendar
- Ability to edit your profile and pay membership dues online
- Ability to search by Chapter
- Integration with the MyEWI Online Community with Single Sign On (SSO) capability
- And more!

Please take a couple of minutes to activate your account by following the three simple steps below.

Step 1: Go to <http://www.ewiconnect.com>

Step 2: Find the “Sign In” box in the center of the homepage. The first field is your username, the second field is

for your password. Your username is j(YOUR EMAIL ADDRESS) and the password **EWI2020**

Step 3: Once you’ve signed in, please create a new username (if desired) and update your password.

Now that you’re in, you can make changes to your profile, register for upcoming events, and have a look around the website!

We hope you find the new website with a fresh look, easy to access information and we also wish to establish this portal as a source of information for those who visit our site.

For any questions, suggestions, feedback, or comments, please e-mail us at ewi@ewiconnect.com

EWI – Wichita B2B Speed Dating

Join us for an evening of Business-to-Business Speed Dating!

Please bring a quick, 3 minute write up on your business – what you do, your business needs, etc., your business cards and something to take notes with.

17
FEB

Wichita Marriott

9100 E Corporate Hills Drive
Wichita, KS 67207





Dinner will be provided – cash bar available

5:30 -
7:30
P.M.



YOU ARE INVITED

To Host a Fireside Lunch or Dinner.

-  Fireside lunch/dinners offer members the opportunity to make connections & develop lasting Relationships both personally and professionally while showcasing your firm.
-  The March Fireside Gatherings are one of EWI Wichita Chapter's Fundraiser Events for the year
-  The hosting firm will determine the location, time, and menu for their Fireside Gathering, in the month of March. In addition, the hosting firm will be responsible for the cost associated with the meal.
-  If your firm would like to host a Fireside Gathering, Please contact Mariah Regier with Sedgwick County Zoo Phone: 316-266-8252 or email:



Lemonades

*Savory slices of shortbread
with a refreshingly tangy lemon
flavored icing.*



Girl Scout S'mores

*Crispy graham cookies
double-dipped in creme icing and*



Peanut Butter Patties

*Crispy vanilla cookies layered
with peanut butter and covered
with a chocolaty coating*



Caramel

Chocolate Chip

Rich caramel, semi-sweet

*Chocolate chips, and a hint of sea salt
in a chewy, gluten-free cookie.**

Hi! I'm Charlotte (Allison Walden's
daughter—with Downing & Lahey
Mortuaries).

I'll be at our February EWI Meeting to sell
Girl Scout cookies! Packages are \$5 each.
If you won't be at the meeting, but would
like cookies, please reach out to my mom
at waldena@dlwichita.com

THANK YOU for helping me reach my goal!



Caramel deLites

*Vanilla cookies topped with caramel,
sprinkled with toasted coconut, and
laced with chocolaty stripes*

NEW Toast-Yay!

*French Toast-inspired cookies
dipped in delicious icing and full of
flavor in every bite. Yay!*

Peanut Butter Sandwich

*Crisp and crunchy oatmeal cookie s
with creamy peanut butter filling*

Thin Mints

*Crispy chocolate wafers dipped in a
mint chocolaty coating.*

Shortbread Trefoils

Traditional shortbread cookies.



RECOGNITION

Did you see the EWI Firms Featured in the Wichita Business Journal?

Reece Nichols

**Interview with Dawn Truman, General Manager
of the Commercial Division
& EWI Past President**



Why is it important to be involved on boards of directors? It's so important to be involved in the community in some capacity. Serving on boards of directors is one of the ways I give back to the community, through my participation and by offering my time, efforts, and experience. Involvement on boards enriches relationships with other community members and leaders, and allows us to be more effective in our community.

What kind of role do you like to play on boards? I have served on boards as a secretary, treasurer, president, and several other roles. I try to serve in roles that best utilize my experience. It's so important to use your knowledge base from both formal education and real-world experience so that you can help other organizations grow and flourish.

How should a person get involved in boards? I always try to serve on boards of organizations with missions that I am passionate about, or with which I want to develop stronger relationships to benefit both our firm and community. For women seeking to get involved serving on boards, I recommend the Executive Women's Group (EWI). EWI is a wonderful organization that offers a great environment for building board leadership skills.

Best advice for young women who want to serve? If you serve on a board, be committed. Recognize that you are obligated to use your time, efforts and energy to help that organization flourish. A lot of people don't realize how time consuming it can be, and the commitment goes far beyond attending board meetings. However, it can be extremely rewarding to be able to serve and benefit the community.

Who are your mentors and how have they influenced your career? Dr. Don Hackett, Family Business Fellow and Associate Professor at Wichita State University, has been a great mentor, particularly concerning boards. He has emphasized construct, leadership and legalities of a board and various roles within a board.

What are you doing to mentor women in your industry? Within my industry, I serve as the committee chair for the Commercial Information Exchange through South Central Kansas MLS and I serve on the Kansas Chapter Certified Commercial Investment Member Board. I work closely with the other women on these boards. I have also mentored female agents, managers and staff in commercial real estate at my firm throughout my years in the industry.

What has been your career path? After graduating from college with a double major in Psychology and Business Administration and a minor in Mathematics, I moved to Kansas and was hired as an administrative assistant for a local commercial real estate firm. I worked there for 35 years. In 2019, I joined ReeceNichols South Central Kansas as Vice President and General Manager of the Commercial & Auction Divisions.



LCAM²⁰²¹_{ewi}
Reach Renew Reimagine

LEADERSHIP CONFERENCE & ANNUAL MEETING

Albuquerque, New Mexico | Sheraton Uptown

REGISTRATION OPENS
MARCH 1, 2021



Some EWI meetings will be available via **ZOOM** as well as in person. If you choose the Zoom option you will still need to sign up on the Squad Up Link and choose the \$20.00 option for ZOOM. If you are coming in person, please sign up at the squad up link listed below and choose the \$30.00 in person option. We hope this allows everyone to be a part of events during these uncertain times. If you have any questions, please do not hesitate to email Kristina@westernassociates.com or call Kristina at 316-712-3053



Wichita Community Events



Please submit any volunteer needs your company may have

to Jessica.Emrick@wichitamarriott.com and it will be posted in our monthly newsletter. We have a great resource to be able to spread the word with our members and companies.

Looking for volunteer opportunities to fill

Scholarship Opportunities

Our ASIST and EWISP scholarships are available to help you achieve your educational and career goals. Applications open in January. Scholarships are awarded at both the Chapter and Corporate level.

Executive Women International (EWI) offers two programs, **EWISP** and **ASIST**, to help qualified applicants to address their academic goals. Each chapter conducts their **EWISP** and/or **ASIST** programs and develops their own criteria regarding deadlines, limiting areas, schools and partner agencies. Applicants must first apply through the local chapter.

EWISP

Executive Women International Scholarship Program (EWISP) encourages, motivates and assists high school seniors pursuing a business or professional career. All high school senior students in public, private and parochial schools with an intent to pursue a four-year degree in any business or professional field of study are eligible to apply.

Open to high school seniors

Winner receives \$1,000 each semester for one year

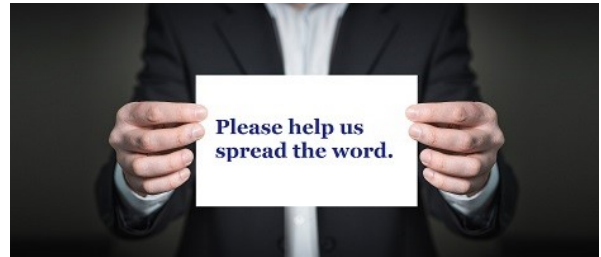
Awarded in May of each year

Scholarship funds applied to tuition and books

Information packets sent to high school guidance counselors in Wichita & surrounding area

Wichita Community Events

Scholarship Opportunity continued....



ASIST

The Adult Students in Scholastic Transition (ASIST) Scholarship is a non-discriminatory, educational scholarship program for the benefit of non-traditional students. These include persons who are past high school age and who are entering a college, university, trade school and/or the workforce for the first time; non-traditional students already enrolled in a college/university or trade program; are retraining due to changes in the workplace; or who otherwise are not the traditional college or trade school student, recently finished with high school.

The ASIST Scholarship Program helps provide financial support to adult students in a variety of transitional situations. The goal of the ASIST Program is to enable recipients to improve their self-esteem and to have a positive impact on the recipient's personal life, employment, family and community.

Open to adult students at transitional points in their lives

Applicants may be single parents, individuals just entering the workforce or displaced workers

Awarded in June of each year

Applicant must be 18 years or older

Must reside in Sedgwick or adjacent county

EWISP and ASIST Applications can be found on the website.

<https://ewiwichita.org/community-2/scholarships/>

City News

Date: February 5, 2021

Contact: City Communications, (316) 268-4351

Wichita Community Events



Nomination to Recognize Excellent Public Service Employees Opens

Beginning today, residents are encouraged to nominate public service employees for the annual Excellence in Public Service Award. Now in its 33rd year, the award recognizes employees from the City of Wichita, Sedgwick County and Wichita Public Schools who exhibit the highest standard of service.

The nomination process is open through 5 p.m., Friday, February 26. Nomination forms are available in the City Manager's Office at 455 N. Main, the County Manager's Office at 525 N. Main and Wichita Public Schools' Strategic Communications Office at 903 S. Edgemoor. Nomination forms can also be printed from [wichita.gov](https://www.wichita.gov) and turned in at the City Manager's Office – City Hall 13th Floor, 455 N. Main. Nominations will also be accepted online at <https://lfforms.wichita.gov/Forms/Excellence>.

The Excellence in Public Service Award honors public employees who go beyond the call of duty and demonstrate the following:

- Exemplary performance that has contributed to the public interest
- Innovative problem-solving skills that have improved service delivery
- Adherence to high ethical standards in carrying out job responsibilities
- A record of community involvement through participation in civic organizations
- Significant contribution toward COVID-19 response in the workplace or community

Honorees will be selected by a committee comprised of nine public and private sector representatives. Due to the cancellation of last year's awards, the DeVore Foundation will honor up to six winners (two per organization) should those nominations meet the criteria. In August, they will be surprised at work by their supervisors, colleagues, selection committee members and media.

The winners will receive \$2,500 and will be honored at a reception attended by family, friends, co-workers, previous honorees, the selection committee and members of the DeVore Foundation in September. The Excellence in Public Service Award is sponsored by the DeVore Foundation and KSN News.

Happy Birthday to YOU!**January Birthdays**

January 14... Marcia Miller

January 18 ... Gina Hess

January 20...Connie Velghe

January 20...D'Ann Drennan

February Birthdays

February 3...Nancy Umholtz

February 6....Jordyn Ortega

February 12...Becky Hall

February 19...Jessica Viramontez

February 23....Mallory Minor

ABOUT EWI

Established in 1938, EWI is a non-profit organization with more than 1,900 member firms and 2,200 representatives in major cities throughout the United States and Canada.

EWI brings members together to promote member firms, to enhance personal and professional development, and to encourage community involvement.

As a premier organization for networking and leadership development for today's business professionals, EWI offers professional development through its Academy of Leadership, scholarships, online learning, and philanthropic initiatives with a focus on literacy.

EWI also provides over 600 board positions to women on the corporate and chapter level annually. For more information, visit ewiconnect.com



Executive Assistant/Office Manager

Cortney Ihde

Work: 262.269.5625

Personal: 262.443.0814

cortney@ewiconnect.com

DON'T FORGET

We post the chapter meeting minutes on our EWI Wichita website at: <https://ewiwichita.org/>



CHAPTER CHAMPION'S CHALLENGE



EWI Corporate

Recruitment & Retention

Christine Laird, ReMerge of Oklahoma City

Good morning all!

As reported in yesterday's January Connect, the corporate recruitment committee has relaunched the C3 campaign with new incentives! This year's campaign will run through August 31 with winners announced at LCAM. Below are some key details about the C3 campaign for your reference:

- 1 successful referral: Bronze - \$200 in chapter marketing monies
- 2 successful referrals: Silver - \$400 in chapter marketing monies
- 3 or more successful referrals: Gold - \$500 in chapter marketing monies

The Chapter that reaches gold status with the most referrals overall during the campaign will be declared the 'Ultimate Winner' and will receive guest speaker coverage (max value of \$500) and \$400 in Chapter marketing monies.

To qualify for the ultimate winner incentive a Chapter must reach gold status. If there is a tie for the ultimate winner incentive, the tiebreaker will be the Chapter that has the best retention percentage during the current fiscal year.

Recruitment committee co-chair Ashley Day has begun following up with chapters who submitted leads for C3 from the 2019 LCAM. We are eager to support your success in this year's campaign and promote growth across the organization.

Please don't hesitate to reach out to me with any questions about this year's C3 campaign: claird@remergeok.org.

Let's start working those referrals!

Christine Laird
Director of Learning and Continuing Care
ReMerge of Oklahoma City
Oklahoma City

EWI Corporate Board of Directors

Our Corporate Board members lead and guide our organization and represent Chapters from across the country. Below is our 2020-2021 board.



Corporate President
Kristi Emmons Jones
 Amare Global
 EWI of Memphis
 kemm64@gmail.com



President-Elect
Christine Healy
 The Printer Inc.
 EWI of Des Moines
 chealy1142@gmail.com



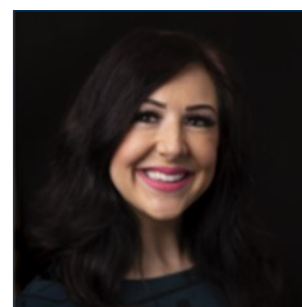
Secretary/Treasurer
Charlie Rosenquist
 Blue Cross/Blue Shield of TN
 EWI of Chattanooga
 charlie_rosenquist@bcbst.com



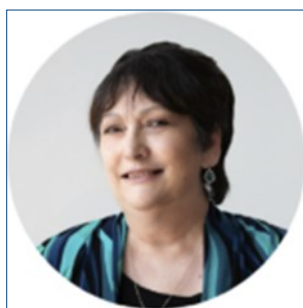
Director
Kathy Scott
 Balls Foods
 EWI of Kansas City
 46director@ballsfoods.com



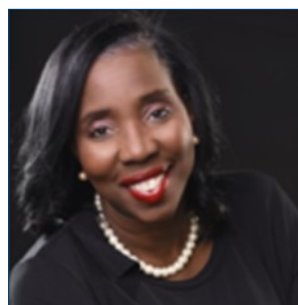
Director
Cheryl Holmes
 CASTO
 EWI of Columbus
 cholmes@castoinfo.com



Director
Christine Laird
 Greater OKC Chamber
 of Commerce
 EWI of OKC
 claird@remergeok.org



Director
Marji Zamora
 Speedy Printing
 EWI of Houston
 marji@speedyprintingtx.com



Advisor
Felicia J. Senter
 Tulsa Tech
 EWI of Tulsa
 felicia.senter@tulsatech.edu

EWI of Wichita Social Media:

EwiOfWichita



ewiwichita



Ewiofwichita



ewiofwichita

*Share events, photos, accomplishments and more with EWI
Wichita Membership in one convenient location! Email social
media submissions to Pam Dinwiddie at pdinwiddie@txtav.com*

Share your news & photos in the monthly
Connect

Contact: Jessica Emrick
Jessica.emrick@wichitamarriott.com

Deadline for March Issue:
March 2, 2021

Upcoming Chapter Meetings

*Third Wednesday of each month
unless otherwise noted.*

February 17, 2021

Wichita Marriott

5:30pm-7:30pm

March Fireside Fundraiser**Dates set by Hostesses****Chapter Board Meetings**

*Second Tuesday of each month
unless otherwise noted.*

All members are welcome.

Contact Kristina Helm
Kristina@westernassociates.com