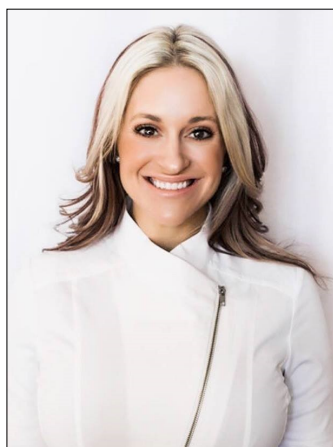


# Wichita ewiConnect

EWI Wichita ... Chartered 1970 ... March 2021

## *A Message From Your EWI President*



MARCH IS HERE! Which means it is **TIME FOR FIRESIDES!** You should have received information from your host for your fireside by now. If by any chance, you have a conflict with the fireside you are assigned to, please email me and let me know so that we can possibly offer you another fireside opportunity. Please make sure you go to the squad up link listed below and pay for your March fireside. All fireside funds will be allocated to our fundraising moey. (Everyone will only pay ONE TIME for March firesides, we are offering the Western Associates Fireside to everyone as a BONUS, so if you end up doing two firesides please note you only pay once).

<https://www.squadup.com/events/ewi-of-wichita-fundraising-event---fireside-events>

All EWI members are **INVITED** to my fireside which is Friday March 26<sup>th</sup> !! See the enclosed flyer for the detailed information on Page 10! Please note, there is a separate link for RSVP to the WA Fireside because I need your shirt size for the event!

April EWI Event: Please get EXCITED for our Speaker Darah Klima- Regional Sales Director with The Buckle. She is such an AMAZING woman of business that has a personality you will LOVE! Her energy and positivity are infectious. Please join us for our April event. Venue Details are forthcoming.

I hope you ladies are doing GREAT! I am excited to see all of you at these events! Wahoo!

Kristina Helm [kristina@westernassociates.com](mailto:kristina@westernassociates.com) 316.712.3053

### 2020—2021 Officers & Directors

#### **President**

Kristina Helm  
Western Associates

#### **Vice President**

Davna Gould  
HealthCore Clinic

#### **Secretary**

Lori Armstrong  
Derby Plaza Theaters

#### **Treasurer**

Kathy Armbruster  
Allen, Gibbs, and Houlik, LLC

#### **Sergeant-at-Arms**

Sydney Tuttle  
Delta Dental of Kansas, Inc.

#### **Directors-at-Large**

Haley Hobbs, Butler County Community College  
Theresa Hogan, Stoutheart Financial

#### **Fundraising Directors**

Annie Life, Wichita Baseball  
Mariah Regier, Sedgwick County Zoo

#### **Communications Directors**

Allison Walden, Downing and Lahey Mortuary  
Jessica Emrick Davies, Wichita Marriott

#### **Membership Directors**

Jan Baggett, Wichita Chamber of Commerce  
Valerie Brashears, City of Wichita

#### **Programs Director**

Jessica Viramontez, Visit Wichita

#### **Advisor**

Pam Dinwiddie, Textron Aviation

President's Message p. 1 ... Committee Reports p. 2-3... Did you Know? Meeting Info, Spotlight, B2B, Corporate Updates/Directors/Officers p. 3-11  
Community Events, LCAM. Birthdays & Corporate Info p. 12-19

DO YOU HAVE A NEED? Are you in the market looking for a particular service?  
Dental Insurance, Event Venues, Hotel, CPA, Financial Planning,  
Death Prearrangements, etc? "STOP & SHOP FIRST" with your EWI sisters!!



Send your payments to:

Kathy Armbruster  
Allen, Gibbs & Houlik, L.C.  
301 N Main St Suite 1700  
Wichita, KS 67202  
316-291-4139

**Chapter Operating Account:**

2/1/21 Opening Balance: \$15,655.23

2/26/21 Reconciled Balance: \$18,289.48

**Chapter BCDP Account:**

2/1/21 Opening Balance \$3,223.28

2/26/21 Reconciled Balance \$3,223.28

**MeriTrust Savings Account:**

2/1/2 Opening Balance \$24,255.74

2/28/21 Reconciled Balance \$24,256.67

**Ameriprise Endowment Account (Stoutheart Financial):**

2/1/21 Opening Balance \$74,227.26

2/28/21 Reconciled Balance \$75,350.18

Executive Women International® brings together key individuals from diverse businesses for the purposes of:

**Connections** - Promoting member firms

**Careers** - Enhancing personal and professional development

**Community** - Encouraging community involvement

## ***Membership Report from the***

**Membership Co-Chairs**

**Jan Baggett - Cell: 807-3934**

**Valerie Brashears - Cell: 213-4414**



**Recruiting is easy! Try it!**

Kristina Helm is having a March Fireside and is inviting all of EWI of Wichita to her firm, Western Associates Facility, in Marion, KS. We will meet at the Wichita Marriott on Friday, March 26 at 3:00 and carpool. We will tour the facility, eat and then drive back. And from what I hear, she has lots of fun activities planned for us. This would be a great meeting to bring a guest, a prospect, an Executive or someone in your office. This is also a cool way to show off one of our member firms.

The April 21<sup>st</sup> EWI Meeting Speaker will be Darah Kilma, Regional Sales Manager for Buckle. She will be talking about WORK/LIFE balance as a Regional Sales Manager. She will also talk about positivity in the workplace and how to push yourself outside your comfort zone to truly grow in your career. She will also talk about COVID and how her company has had to work to change and grow through this time. This is going to be a great meeting. Take the time to invite a guest, a prospect, an Executive or someone in your office.

Bringing someone to an EWI meeting is an easy way to showcase EWI and maybe gain a new firm and representative. I'm sure you know of at least one person that could really use EWI to grow their career and broaden their connections. This is such a great organization that does great things, and we need to tout it.

We encourage everyone to work on their own "Elevator Speech" so they can be ready when there is an opportunity to talk to someone about EWI. Mine is: EWI is a great opportunity for someone to develop business relationships and valuable community connections, to grow personally and professionally, to develop leadership experiences, to have a forum to share ideas and promote your firm, and to participate in philanthropic initiatives that make a big difference in the lives of many people in our city.

Several of the prospects we are working on right now have been a referral from an EWI rep that just happened to bring up the subject of EWI in their normal interactions and found there was interest. If you aren't comfortable recruiting someone, just send us your prospect names and we will take it from there.

Work on YOUR elevator speech and be prepared to tout the benefits of EWI of Wichita.





***EWI Corporate* hosts a free monthly  
Professional Development webinar  
available to all EWI members?**

## **MAY PROFESSIONAL DEVELOPMENT WEBINAR**

**Save the date: WEBINAR – LEADERSHIP WITH PANACHE  
INSPIRE MOTIVATE AND INFLUENCE**

**Tuesday, May 4, 2021  
3:00 PM ET / 12:00 PM PT**



**Presenter: Diana Hoyt**  
**Chief Strategist & Trainer**  
**Formula for Fundraising**

How do you as business leaders and as volunteer leaders become the best you can be and inspire, motivate and influence co-workers, vendors, and colleagues? How can you truly make an impactful difference? Three leadership concepts, not new, but woven together can indeed inspire, motivate, and influence – whether you are leading a team of hundreds or being a solopreneur. Embracing these three ideas can shift your perspective and awaken a sense of determination and well-being.

You will learn her three secrets for success:

- 1) Understand the role of "why" they do what they do
- 2) Create Strategies for being a thought leader
- 3) Identify how to be a transformational leader



EWI of Wichita is a member of the Wichita Regional Chamber of Commerce. The Chamber's purpose statement is: Success for our members, Leadership for our community and Prosperity for our region. That purpose drives the Chamber to work hard every day to help build a great climate for our business community. There are many benefits of being a Chamber member, but I'd like to highlight a few that might be the most relevant to our EWI representatives.

The Chamber publishes a weekly eSynergy email newsletter that promotes Chamber members, highlights upcoming events and other news. They also publish the Advocate newsletter that gives updates on all things important to business that the Chamber advocates for. Anyone of our EWI members can sign up for the Chamber's publications. Below are the instructions.

EWI members are also eligible to request login credentials that will allow you to do the following:

- To sign up for the Chamber's publications, fill out the form at <https://www.wichitachamber.org/main/contact/>.
- Represent EWI at Chamber events – representatives of Chamber Members can access members-only events and pricing for other events (including networking and educational opportunities)
- View videos in the Video Library
- Submit EWI events to the community calendar (events for non-Chamber Members are not eligible for posting)

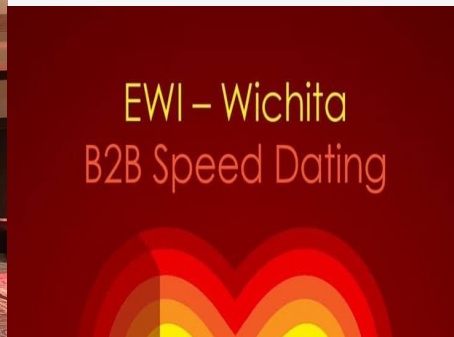
If you don't already have a login through your company, you can request a login through EWI's Chamber membership by contacting Rebecca Saxton, Membership Data Manager, at [rsaxton@wichitachamber.org](mailto:rsaxton@wichitachamber.org). Include your:

- First & last name, Email, Company, Job Title and Phone Number.

I hope you find this information helpful and if you have any questions, please contact Jan Baggett

at [jbaggett@wichitachamber.org](mailto:jbaggett@wichitachamber.org)

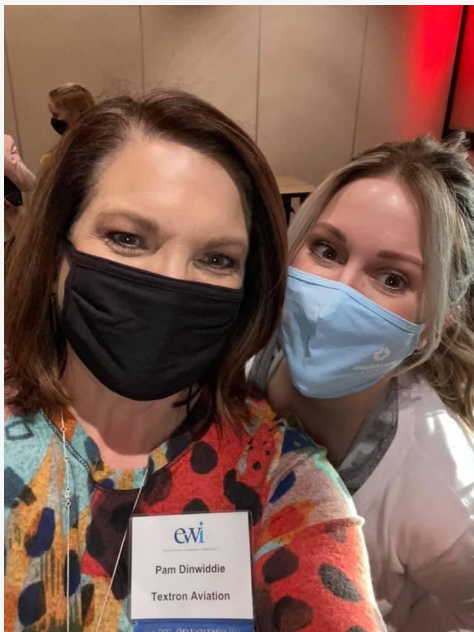




## EWI B2B

## February Meeting

B2B –A business model that focuses on selling products & services to other companies.







## EWI B2B February Meeting Networking at it's finest!



EWI B2B

Networking at  
it's finest!

*Wichita Marriott*

Jessica.emrick@wichitamariott.com 316-462-3164 Direct

All Day Decorating!

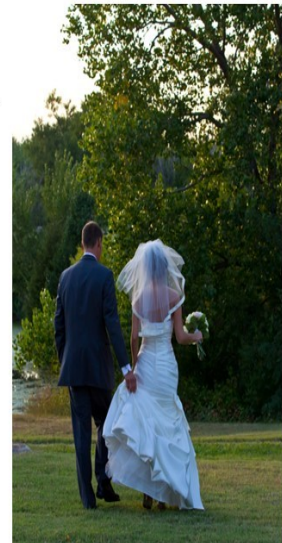


Planning a Holiday Party, Fundraiser, Wedding or Conference?

Do you want the most value for your money?

As an EWI Sister, enjoy **Discounted Room Rental** with complimentary tables, chairs, & linens. Marriott will set up and clean up the room!

Complimentary dance floor and cake cutting! **Discounted Sleeping Rooms** and **Complimentary Airport Shuttle** To and From the Airport. Keep all your guests in one central location! After a night of drinking, guests can just go on up to their room. Meet family in the Great Room for breakfast before they leave town the morning after the event. Celebrations don't have to stop just because everything else did! Celebrate in style with luxury accommodations. *Socially distanced setups available!*



# Business to Business Feature



Samantha Marnick  
Executive



Tami Portela  
Representative



Amy Williams  
Executive



Monique Boyd  
Representative

**How long has Spirit AeroSystems, Inc. been in the Wichita community?**

15 years

**What is Spirit AeroSystems, Inc.'s mission?**

Global diversified design and manufacturing champion.

**Tell us something interesting about Spirit AeroSystems, Inc.?**

Spirit is a 15 year old company with a 100 year history – which included 1,644 B-29's in Wichita up to a peak rate of 4.2/day and 35,000 employees.

In 1977, the 500<sup>th</sup> 737 fuselage delivered, in 1983 the 1,000<sup>th</sup> 737 fuselage delivered, in 2018 the 10,000<sup>th</sup> 737 fuselage was delivered.



# Business to Business Feature

## What is the size of Spirit AeroSystems, Inc.?

Spirit AeroSystems, with headquarters in Wichita, KS is one of the world's largest non-OEM designers and manufacturers of aerostructures for commercial and defense aircraft. In addition to its Wichita facilities, Spirit has locations in Tulsa and McAlester, OK; Kinston, NC; Biddeford, ME; San Antonio, TX; Prestwick, Scotland; Belfast, Northern Ireland; Subang, Malaysia; Casablanca, Morocco; Saint-Nazaire, France. The company's core products include fuselages, pylons, nacelles and wing components. Additionally, Spirit provides maintenance, repair, and overhaul services.

Spirit AeroSystems is a \$7 billion global company, with more than 14,800 employees worldwide. About 8,000 of those employees are located at the company's corporate headquarters in Wichita.

## How does Spirit AeroSystems, Inc. benefit the Wichita community?

Spirit AeroSystems supports the Wichita community in several ways. Spirit executives serve on local business' board of directors. Employees volunteer across the city to help non-profit charities. Both employees and Spirit AeroSystems gives and raises donations throughout the year for several ongoing events we support year round. When the unthinkable happens everyone steps up to help their co-worker and community.

## What does Spirit AeroSystems, Inc. have planned for the future?

Spirit AeroSystems, Inc. is working to apply research and emerging technologies in designing, fabricating, assembling, and integrating components and structures for premier commercial and defense aerospace programs.





## March Fireside HOST Firms

**John A. Marshall Company – Jennifer Drace**

**Star Lumber – Mallory Minor**

**Downing & Lahey Mortuaries & Crematory – Allison Walden**

**Textron Aviation – Tammy Voth and Pam Dinwiddie**

**Western Associates-Kristina Helm**

# YOU WILL BE INVITED!

The March Fireside Gatherings are one of EWI Wichita Chapter's Fundraiser Events for the year and the Host Firms have been picked! Watch your email and/or mail for invitations to a Fireside lunch or dinner. They offer members the opportunity to make connections and develop lasting Relationships both personally and professionally while showcasing their firm. The hosting firm will determine the location, time, and menu for their Fireside Gathering, in the month of March. Look for those invitations to come soon!

Questions? Please contact Mariah Regier with Sedgwick County Zoo

Phone: 316-266-8252 or email: [Mariah.Regier@scz.org](mailto:Mariah.Regier@scz.org)



**BONUS:** Western Associates is renting *THE PARTY BUS* for **ALL EWI Members** on **Friday, March 26th** to transport those interested to Marion where the WA headquarters is located.

President Helm will meet us at the Wichita Marriott at 1:45pm– She is coordinating a party bus to come pick all of us up at the Marriott so that we can all ride together to and from Marion as it's one hour away. **THIS WILL BE A TON OF FUN!**

***Behind the Scenes Tour*** of the facility in Marion– We will meet her team, tour the production facilities and learn more about the promotional products and specialty advertising industry.

Followed by a Social & Hors d'oeuvres @the beautiful historic Elgin Hotel - 7:00pm Head Back to Wichita on the Bus. Please **register online by March 15 @ [washows.com](http://washows.com)** be sure to include your shirt size when you register as you will receive a FUN EWI T shirt!

## RECOGNITION

*Did you see the EWI Firms Featured in the Wichita Business Journal?*

**Mentoring in this Moment....  
The challenges for women who wish to help lift others  
have never been greater or more necessary to overcome.**

**AS A MENTOR, HOW ARE YOU MENTORING DIFFERENTLY  
DURING THIS TIME OF THE PANDEMIC?**



"This pandemic has taught me to be more intentional in my relationships. In the past, meeting for coffee or lunch or stopping by to see a co-worker to check in was a part of the workday. Now, ensuring I check in more frequently than a scheduled mentoring time is important. This is not only good for making sure others know you are thinking of them and are there for them, but also for my own mental well-being. Human connection is so important and finding new ways to connect will help us all get through this."...Michelle Gifford

"Working from home, by myself, presented new challenges for how I would satisfy my need to interact with people socially & professionally. It forced me to think outside the box and be creative in finding meaningful connections. Thus, I focused on intentional inclusivity. I registered to be a company mentor, being matched with another employee, meeting bimonthly to discuss professional development and leadership growth. I also seek out and schedule one on one virtual chats/coffee time/lunch with those who are not part of my regular work team. This has allowed me to broaden my circle of influence, but has also afforded me the opportunity to learn about another's perceptions, culture and experiences."....Sherii Farmer



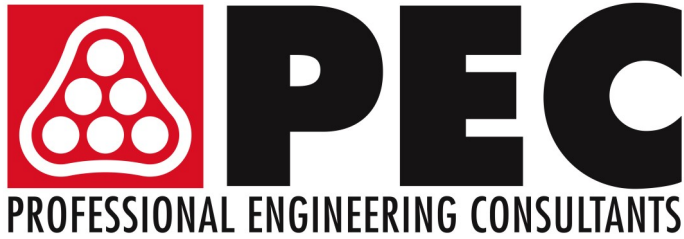
"Besides Zoom and phone calls instead of coffee and lunch dates, my conversations have shifted from more typical career path or professional development topics to personal well being and health. The pandemic has proven hard in so many different ways for women in particular that mentoring conversations have become a time to provide more overall support and connection during this time."...

Nicole Alexander

"Pre-pandemic, I would meet mentees at a coffee shop or schedule time in a my office. With the pandemic, I am thankful for virtual tools that allow me to keep connected such as Zoom or Teams. The ability to add video has helped to keep the connection a little more personal, even though we can't be physically face to face." ...Katie Wesbrooks







**Recognized by WBJ as the Largest Engineering firm in the Wichita area**

**Ranked by Total number of Wichita-area registered and/or licensed engineers**

## **Professional Engineering Consultants PA**

Joe Surmeier, President/CEO

EWI Representative: Ashley Kracke

EWI Executive: Carol Horsh



RSVP for the March Fireside at

<https://www.squadup.com/events/ewi-of-wichita-fundraising-event---fireside-events>

It has been brought to our attention, some members are having problems RSVP'ing through Squad Up.

If anyone has trouble with a rsvp, we suggest they use another browser (like Google Chrome) other than Internet Explorer.

You can also go to the website Chapter Calendar to rsvp for the March meeting and click on tickets: <https://ewiwichita.org/connections-2/chapter-calendar/>



# Registration



**LCAM<sup>2021</sup>**  
*Reach Renew Reimagine*

## LEADERSHIP CONFERENCE & ANNUAL MEETING

Albuquerque, New Mexico | Sheraton Uptown

REGISTRATION OPENS  
**MARCH 1, 2021**

Some EWI meetings will be available via **ZOOM** as well as in person. If you choose the Zoom option you will still need to sign up on the Squad Up Link and choose the \$20.00 option for ZOOM. If you are coming in person, please sign up at the squad up link listed below and choose the \$30.00 in person option. We hope this allows everyone to be a part of events during these uncertain times. If you have any questions, please do not hesitate to email [Kristina@westernassociates.com](mailto:Kristina@westernassociates.com) or call Kristina at 316-712-3053



## Wichita Community Events



Please submit any volunteer needs your company may have

to [Jessica.Emrick@wichitamarriott.com](mailto:Jessica.Emrick@wichitamarriott.com) and it will be posted in our monthly newsletter. We have a great resource to be able to spread the word with our members and companies.

Looking for volunteer opportunities to fill

## Scholarship Opportunities

**Our ASIST and EWISP scholarships are available to help you achieve your educational and career goals. Applications open in January. Scholarships are awarded at both the Chapter and Corporate level.**

**Executive Women International (EWI)** offers two programs, **EWISP** and **ASIST**, to help qualified applicants to address their academic goals. Each chapter conducts their **EWISP** and/or **ASIST** programs and develops their own criteria regarding deadlines, limiting areas, schools and partner agencies. Applicants must first apply through the local chapter.

### EWISP

Executive Women International Scholarship Program (EWISP) encourages, motivates and assists high school seniors pursuing a business or professional career. All high school senior students in public, private and parochial schools with an intent to pursue a four-year degree in any business or professional field of study are eligible to apply.

Open to high school seniors

Winner receives \$1,000 each semester for one year

Awarded in May of each year

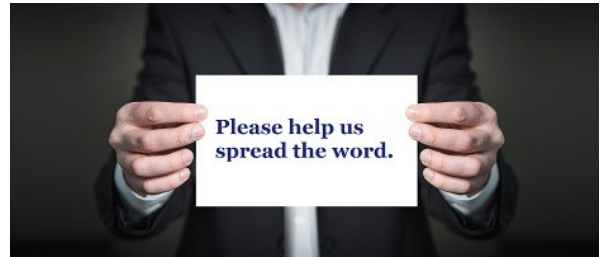
Scholarship funds applied to tuition and books

Information packets sent to high school guidance counselors in Wichita & surrounding area



## Wichita Community Events

Scholarship Opportunity continued....



### ASIST

The Adult Students in Scholastic Transition (ASIST) Scholarship is a non-discriminatory, educational scholarship program for the benefit of non-traditional students. These include persons who are past high school age and who are entering a college, university, trade school and/or the workforce for the first time; non-traditional students already enrolled in a college/university or trade program; are retraining due to changes in the workplace; or who otherwise are not the traditional college or trade school student, recently finished with high school.

The ASIST Scholarship Program helps provide financial support to adult students in a variety of transitional situations. The goal of the ASIST Program is to enable recipients to improve their self-esteem and to have a positive impact on the recipient's personal life, employment, family and community.

Open to adult students at transitional points in their lives

Applicants may be single parents, individuals just entering the workforce or displaced workers

Awarded in June of each year

Applicant must be 18 years or older

Must reside in Sedgwick or adjacent county

EWISP and ASIST Applications can be found on the website.

<https://ewiwichita.org/community-2/scholarships/>



**March 5 ... Dawn Truman**

**March 7 ... Annie Murach**

**March 13...Jennifer Drace**

**March 18...Sharon Thomas**

**March 23....Kathy Armbruster**

**March 25....Jan Baggett**

**March 28...Pat Campbell**

**April 6...Ashley Schopf**

**April 13...Jessica Emrick Davies**

**April 13..Allison Walden**

**April 21...Fonda Ellis**

**April 22 ...Kristina Helm**

**April 25...Allison Le**

#### **ABOUT EWI**

Established in 1938, EWI is a non-profit organization with more than 1,900 member firms and 2,200 representatives in major cities throughout the United States and Canada.

EWI brings members together to promote member firms, to enhance personal and professional development, and to encourage community involvement.

As a premier organization for networking and leadership development for today's business professionals, EWI offers professional development through its Academy of Leadership, scholarships, online learning, and philanthropic initiatives with a focus on literacy.

EWI also provides over 600 board positions to women on the corporate and chapter level annually. For more information, visit [ewiconnect.com](http://ewiconnect.com)



**Executive Assistant/Office Manager**

**Cortney Ihde**

Work: 262.269.5625

#### **DON'T FORGET**

We post the chapter meeting minutes on our EWI Wichita website at: <https://ewiwichita.org/>



## CHAPTER CHAMPION'S CHALLENGE



EWI Corporate

### Recruitment & Retention

Christine Laird, ReMerge of Oklahoma City

Good morning all!

The corporate recruitment committee has relaunched the C3 campaign with new incentives! This year's campaign will run through August 31 with winners announced at LCAM. Below are some key details about the C3 campaign for your reference:

- 1 successful referral: Bronze - \$200 in chapter marketing monies
- 2 successful referrals: Silver - \$400 in chapter marketing monies
- 3 or more successful referrals: Gold - \$500 in chapter marketing monies

The Chapter that reaches gold status with the most referrals overall during the campaign will be declared the 'Ultimate Winner' and will receive guest speaker coverage (max value of \$500) and \$400 in Chapter marketing monies.

To qualify for the ultimate winner incentive a Chapter must reach gold status. If there is a tie for the ultimate winner incentive, the tiebreaker will be the Chapter that has the best retention percentage during the current fiscal year.

Recruitment committee co-chair Ashley Day has begun following up with chapters who submitted leads for C3 from the 2019 LCAM. We are eager to support your success in this year's campaign and promote growth across the organization.

Please don't hesitate to reach out to me with any questions about this year's C3 campaign: [claird@remergeok.org](mailto:claird@remergeok.org).

Let's start working those referrals!

Christine Laird  
Director of Learning and Continuing Care  
ReMerge of Oklahoma City  
Oklahoma City  
405-208-7203



## ***EWI Corporate Board of Directors***

Our Corporate Board members lead and guide our organization and represent Chapters from across the country. Below is our 2020-2021 board.



**Corporate President**  
**Kristi Emmons Jones**  
 Amare Global  
 EWI of Memphis  
 kemm64@gmail.com



**President-Elect**  
**Christine Healy**  
 The Printer Inc.  
 EWI of Des Moines  
 chealy1142@gmail.com



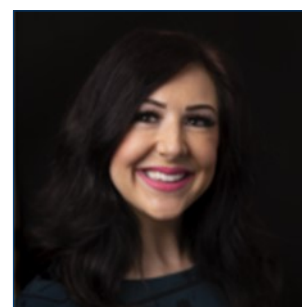
**Secretary/Treasurer**  
**Charlie Rosenquist**  
 Blue Cross/Blue Shield of TN  
 EWI of Chattanooga  
 charlie\_rosenquist@bcbst.com



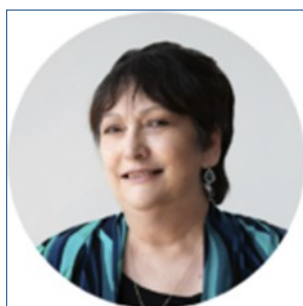
**Director**  
**Kathy Scott**  
 Balls Foods  
 EWI of Kansas City  
 46director@ballsfoods.com



**Director**  
**Cheryl Holmes**  
 CASTO  
 EWI of Columbus  
 cholmes@castoinfo.com



**Director**  
**Christine Laird**  
 Greater OKC Chamber  
 of Commerce  
 EWI of OKC  
 claird@remergeok.org



**Director**  
**Marji Zamora**  
 Speedy Printing  
 EWI of Houston  
 marji@speedyprintingtx.com



**Advisor**  
**Felicia J. Senter**  
 Tulsa Tech  
 EWI of Tulsa  
 felicia.senter@tulsatech.edu

**EWI of Wichita Social Media:**

EwiOfWichita



ewiwichita



Ewiofwichita



ewiofwichita

*Share events, photos, accomplishments and more with EWI  
Wichita Membership in one convenient location! Email social  
media submissions to Pam Dinwiddie at [pdinwiddie@txtav.com](mailto:pdinwiddie@txtav.com)*

Share your news & photos in the monthly  
*Connect*

Contact: Jessica Emrick  
[Jessica.emrick@wichitamarriott.com](mailto:Jessica.emrick@wichitamarriott.com)

**Deadline for March Issue:**  
**April 6, 2021**

**Upcoming Chapter Meetings**

*Third Wednesday of each month  
unless otherwise noted.*

**March Fireside Fundraiser**

**Dates set by Hostesses**

**April Meeting**

**Wednesday, April 21**

Speaker - Darah Klima -

Regional Sales Manager- Buckle

**Chapter Board Meetings**

*Second Tuesday of each month  
unless otherwise noted.*

**All members are welcome.**

Contact Kristina Helm  
[Kristina@westernassociates.com](mailto:Kristina@westernassociates.com)