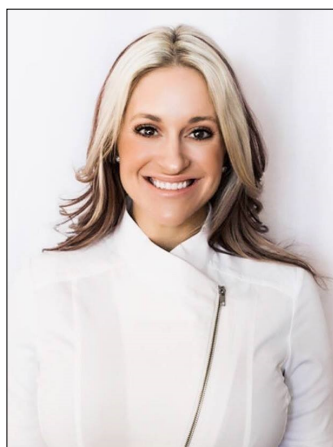


# Wichita EWIConnect

EWI Wichita ... Chartered 1970 ... April 2021

## *A Message From Your EWI President*

Kristina Helm- President



Hello EWI WICHITA! It is so great to know that light is at the end of this COVID-19 Tunnel. I appreciate everyone for hanging in there with us as we fine tune things this year, navigating changes with COVID-19. April 21<sup>st</sup> is our EWI Event featuring Darah Klima, with The Buckle! She is a personal dear friend of mine as well as a ROCKSTAR woman in business.

Her positivity is infectious and she will always leave you happier and smiling from your interactions with her. I have told her all about EWI and would love to show her a strong headcount if everyone feels comfortable to come.

Please make sure you register on the squad up link I provided in the calendar invite. It is also helpful if you respond to my calendar invite as well so that I can gauge a headcount. May will be a **DAYTIME EWI event** for those of you that daytime works best, I CAN'T WAIT TO SEE YOU! Invites will be going out for this event soon, so please watch your emails.

QUOTE OF THE MONTH: "There are three ways to ultimate success. The first way is to be kind. The second way is to be kind. The third way is to be kind. –Mister Rogers  
Wahoo!

Kristina Helm [kristina@westernassociates.com](mailto:kristina@westernassociates.com) 316.712.3053

## 2020—2021 Officers & Directors

### President

Kristina Helm  
Western Associates

### Vice President

Davna Gould  
HealthCore Clinic

### Secretary

Lori Armstrong  
Derby Plaza Theaters

### Treasurer

Kathy Armbruster  
Allen, Gibbs, and Houlik, LLC

### Sergeant-at-Arms

Sydney Tuttle  
Delta Dental of Kansas, Inc.

### Directors-at-Large

Haley Hobbs, Butler County Community College  
Theresa Hogan, Stoutheart Financial

### Fundraising Directors

Mariah Regier, Sedgwick County Zoo

### Communications Directors

Allison Walden, Downing and Lahey Mortuary  
Jessica Emrick Davies, Wichita Marriott

### Membership Directors

Jan Baggett, Wichita Chamber of Commerce  
Valerie Brashears, City of Wichita

### Programs Director

Jessica Viramontez, Visit Wichita

### Advisor

Pam Dinwiddie, Textron Aviation

President's Message p. 1 ... Committee Reports p. 2-3... Did you Know?  
Member Spotlight, Meetings, B2B, Corporate Updates/Directors/Officers p. 3-10  
Community Events, LCAM. Birthdays & Corporate Info p. 11-16

**DO YOU HAVE A NEED?** Are you in the market looking for a particular service?  
 Dental Insurance, Event Venues, Hotel, CPA, Financial Planning,  
 Death Prearrangements, etc? **“STOP & SHOP FIRST”** with your EWI sisters!!



Send your payments to:

Kathy Armbruster  
 Allen, Gibbs & Houlik, L.C.  
 301 N Main St Suite 1700  
 Wichita, KS 67202  
 316-291-4139

**Chapter Operating Account:**

3/1/21 Opening Balance: \$18,289.48

3/31/21 Reconciled Balance: \$18,900.10

**Chapter BCDP Account:**

3/1/21 Opening Balance \$3,223.28

3/31/21 Reconciled Balance \$3,223.28

**MeriTrust Savings Account:**

3/1/2 Opening Balance \$24,256.67

3/31/21 Reconciled Balance \$24,257.70

**Ameriprise Endowment Account (Stoutheart Financial):**

3/1/21 Opening Balance \$75,350.18

3/31/21 Reconciled Balance \$75,982.26

Executive Women International® brings together key individuals from diverse businesses for the purposes of:

**Connections** - Promoting member firms

**Careers** - Enhancing personal and professional development

**Community** - Encouraging community involvement

## ***Membership Report from the***

**Membership Co-Chairs**

**Jan Baggett - Cell: 807-3934**

**Valerie Brashears - Cell: 213-4414**



**Recruiting is easy! Try it!**

**The April 21<sup>st</sup> EWI Meeting Speaker will be Darah Kilma, Regional Sales Manager for Buckle. She will be talking about WORK/LIFE balance as a Regional Sales Manager. She will also talk about positivity in the workplace and how to push yourself outside your comfort zone to truly grow in your career. She will also talk about COVID and how her company has had to work to change and grow through this time. This is going to be a great meeting. Take the time to invite a guest, a prospect, an Executive or someone in your office.**

**Bringing someone to an EWI meeting is an easy way to showcase EWI and maybe gain a new firm and representative. I'm sure you know of at least one person that could really use EWI to grow their career and broaden their connections. This is such a great organization that does great things, and we need to tout it.**

**We encourage everyone to work on their own "Elevator Speech" so they can be ready when there is an opportunity to talk to someone about EWI. Mine is: EWI is a great opportunity for someone to develop business relationships and valuable community connections, to grow personally and professionally, to develop leadership experiences, to have a forum to share ideas and promote your firm, and to participate in philanthropic initiatives that make a big difference in the lives of many people in our city.**

**Several of the prospects we are working on right now have been a referral from an EWI rep that just happened to bring up the subject of EWI in their normal interactions and found there was interest. If you aren't comfortable recruiting someone, just send us your prospect names and we will take it from there.**

**Work on YOUR elevator speech and be prepared to tout the benefits of EWI of Wichita.**





***EWI Corporate* hosts a free monthly  
Professional Development webinar  
available to all EWI members?**

## **MAY PROFESSIONAL DEVELOPMENT WEBINAR**

**Save the date: WEBINAR – LEADERSHIP WITH PANACHE  
INSPIRE MOTIVATE AND INFLUENCE**

**Tuesday, May 4, 2021  
3:00 PM ET / 12:00 PM PT**



**Presenter: Diana Hoyt  
Chief Strategist & Trainer  
Formula for Fundraising**

How do you as business leaders and as volunteer leaders become the best you can be and inspire, motivate and influence co-workers, vendors, and colleagues? How can you truly make an impactful difference? Three leadership concepts, not new, but woven together can indeed inspire, motivate, and influence – whether you are leading a team of hundreds or being a solopreneur. Embracing these three ideas can shift your perspective and awaken a sense of determination and well-being.

You will learn her three secrets for success:

- 1) Understand the role of "why" they do what they do
- 2) Create Strategies for being a thought leader
- 3) Identify how to be a transformational leader



# New Member SPOTLIGHT



Executive for Julie Simon

**JOLEY RILEY**

Executive for Shannon Eggleston

**MOJI ROSSON**



Executive for Erika Koch

**JESSICA BURROW**



Meritrust Replacement

Representative for Debbie Pfingston

**JULIE SIMON**



Additional Representative

**SHANNON EGGLESTON**



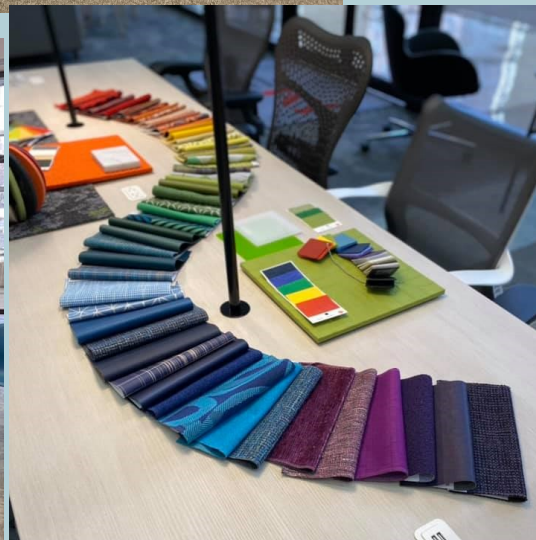
Additional Representative

**ERIKA KOCH**

Be sure to welcome them and learn more about them  
as they are introduced at upcoming meetings!



## March Fireside







Beechcraft

BY TEXTRON AVIATION

## March Fireside





## March Fireside





## March Fireside





# Business to Business Feature



**ReeceNichols**  
SOUTH CENTRAL KANSAS

*An Independently Owned and Operated Member of the Reece & Nichols Alliance, Inc.*



Richelle Knotts  
Executive



Dawn Truman  
Representative

**How long has ReeceNichols been in the Wichita community?**

Since January 2019

**What is the size of Reece Nichols?**

We currently have 95 agents and office locations in East Wichita, West Wichita, Derby, and Hutchinson.

**What is ReeceNichols' mission?**

To inspire a positive, lasting impact through dedicated service.

**How can ReeceNichols company assist other EWI firms?**

At ReeceNichols South Central Kansas, we provide our clients with the most knowledgeable professionals that can assist you with all your real estate needs. As a full-service real estate company, we are here for you whether you are a buyer, seller, corporation, investor, developer, landlord, or tenant. We cover all industry sectors such as residential, relocation, commercial, auction, industrial, office, retail, and investment.

**What has EWI (or connections formed in EWI) provided for your company?**

EWI has provided us with valuable relationships. These relationships are not only friendships but also professional as they have connected us with other local businesses. Being connected through this organization, members support each other and help their businesses grow, and in turn, strengthen the Wichita community. The connections we have made with member firms have provided our company with many solutions on a daily basis.

**What does your company have planned for the future?**

Our plan for the future is growth. Not only in the number of agents, transactions, or geographical coverage but our involvement in the community and our dedication to client services. As we grow in these ways, we will also strengthen our culture of dedication, teamwork, and results.

# Business to Business Feature

## How is your company involved in the Wichita community?

ReeceNichols SCK is all about rewarding lives – the lives of our agents, our employees, and our fellow community members. To put action to our values, we are actively volunteering and donating to several local organizations here in the Wichita community. Our most recent is our partnership with the Wichita Ronald McDonald House in the form of the Gold Key Project. Agents committed to the Gold Key project donate \$100 from every closing they have in 2021 to the Ronald McDonald House. In addition to monetary donations, we also make and serve meals at the House every third Thursday of the month. The Ronald McDonald House is just one of the organizations we are committed to helping, we also volunteer at Victory in the Valley, Giving the Basics, and several others throughout the year.



## What's an interesting fact about your business that others may not know?

Through our parent company of 3,000 agents in Kansas City, we are local, regional, and global. With connections in the KC market and being an affiliate of Leading Real Estate Companies of the World, our network spans from coast to coast and everywhere in between. With this wide network, we also have access to top tools in the industry. In 2020 RN was ranked #1 in the State of Kansas and Missouri.

## Who are your mentors and how have they influenced your career?

Dr. Don Hackett, Family Business Fellow and Associate Professor at Wichita State University, has been a great mentor, particularly concerning boards. He has emphasized construct, leadership and legalities of a board and various roles within a board. Through this mentorship and service on the EWI board, I [Dawn Truman] have developed the confidence and willingness to serve on boards that I am passionate about.

## What are you doing to mentor women in your industry?

Within my industry, I [Dawn] serve as the committee chair for the Commercial Information Exchange through South Central Kansas MLS and I serve on the Kansas Chapter Certified Commercial Investment Member Board. I work closely with other women on these boards. I have also mentored female agents, managers and staff in commercial real estate at my firm throughout my years in the industry.



Early Bird Pricing will save members \$100 by registering by June 30th !

## CONFERENCE REGISTRATION

\$650 - Early Bird Ends June 30

\$750 - Regular Registration Ends Sept 10



### LEADERSHIP CONFERENCE & ANNUAL MEETING

Albuquerque, New Mexico | Sheraton Uptown

REGISTRATION OPENS  
MARCH 1, 2021

## LEADERSHIP CONFERENCE & ANNUAL MEETING

September 16-18, 2021

EWI's Leadership Conference and Annual Meeting (LCAM) is an annual professional development conference where members from our Chapters gather to connect, network and grow professionally through keynote speakers, workshops, seminars, group discussions, and more. During LCAM, delegates also conduct the business of the organization during our annual meeting. We also hold social gatherings, Reading Rally events, recognize our members for their accomplishments, and learn new ideas.

### KIM BECKING

Momentum Motivation

### KEYNOTE ADDRESS

Resign as General Manager of the Universe: Five Keys to Avoid Burnout and Move from Chaos to Calm



## Wichita Community Events



Please submit any volunteer needs your company may have

to [Jessica.Emrick@wichitamarriott.com](mailto:Jessica.Emrick@wichitamarriott.com) and it will be posted in our monthly newsletter. We have a great resource to be able to spread the word with our members and companies.

Looking for volunteer opportunities to fill

## Scholarship Opportunities

**Our ASIST and EWISP scholarships are available to help you achieve your educational and career goals. Applications open in January. Scholarships are awarded at both the Chapter and Corporate level.**

**Executive Women International (EWI)** offers two programs, **EWISP** and **ASIST**, to help qualified applicants to address their academic goals. Each chapter conducts their **EWISP** and/or **ASIST** programs and develops their own criteria regarding deadlines, limiting areas, schools and partner agencies. Applicants must first apply through the local chapter.

### EWISP

Executive Women International Scholarship Program (EWISP) encourages, motivates and assists high school seniors pursuing a business or professional career. All high school senior students in public, private and parochial schools with an intent to pursue a four-year degree in any business or professional field of study are eligible to apply.

Open to high school seniors

Winner receives \$1,000 each semester for one year

Awarded in May of each year

Scholarship funds applied to tuition and books

Information packets sent to high school guidance counselors in Wichita & surrounding area

## Wichita Community Events

Scholarship Opportunity continued....



### ASIST

The Adult Students in Scholastic Transition (ASIST) Scholarship is a non-discriminatory, educational scholarship program for the benefit of non-traditional students. These include persons who are past high school age and who are entering a college, university, trade school and/or the workforce for the first time; non-traditional students already enrolled in a college/university or trade program; are retraining due to changes in the workplace; or who otherwise are not the traditional college or trade school student, recently finished with high school.

The ASIST Scholarship Program helps provide financial support to adult students in a variety of transitional situations. The goal of the ASIST Program is to enable recipients to improve their self-esteem and to have a positive impact on the recipient's personal life, employment, family and community.

Open to adult students at transitional points in their lives

Applicants may be single parents, individuals just entering the workforce or displaced workers

Awarded in June of each year

Applicant must be 18 years or older

Must reside in Sedgwick or adjacent county

EWISP and ASIST Applications can be found on the website.

<https://ewiwichita.org/community-2/scholarships/>





**April 6...Ashley Schopf**

**May 8...Jeanetta Bolin**

**April 13...Jessica Emrick Davies**

**April 13..Allison Walden**

**April 21...Fonda Ellis**

**April 22 ...Kristina Helm**

**April 25...Allison Le**

#### **ABOUT EWI**

Established in 1938, EWI is a non-profit organization with more than 1,900 member firms and 2,200 representatives in major cities throughout the United States and Canada.

EWI brings members together to promote member firms, to enhance personal and professional development, and to encourage community involvement.

As a premier organization for networking and leadership development for today's business professionals, EWI offers professional development through its Academy of Leadership, scholarships, online learning, and philanthropic initiatives with a focus on literacy.

EWI also provides over 600 board positions to women on the corporate and chapter level annually. For more information, visit [ewiconnect.com](http://ewiconnect.com)



**Executive Assistant/Office Manager**

**Cortney Ihde**

Work: 262.269.5625

#### **DON'T FORGET**

We post the chapter meeting minutes on our EWI Wichita website at: <https://ewiwichita.org/>

## ***EWI Corporate Board of Directors***

Our Corporate Board members lead and guide our organization and represent Chapters from across the country. Below is our 2020-2021 board.



**Corporate President**  
**Kristi Emmons Jones**  
 Amare Global  
 EWI of Memphis  
 kemm64@gmail.com



**President-Elect**  
**Christine Healy**  
 The Printer Inc.  
 EWI of Des Moines  
 chealy1142@gmail.com



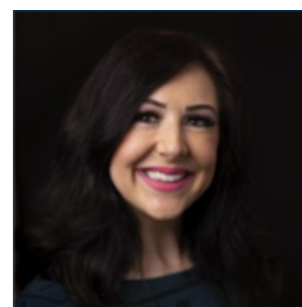
**Secretary/Treasurer**  
**Charlie Rosenquist**  
 Blue Cross/Blue Shield of TN  
 EWI of Chattanooga  
 charlie\_rosenquist@bcbst.com



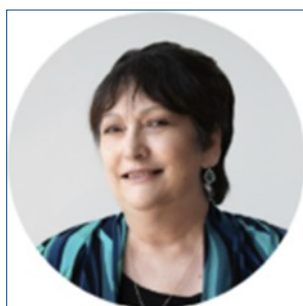
**Director**  
**Kathy Scott**  
 Balls Foods  
 EWI of Kansas City  
 46director@ballsfoods.com



**Director**  
**Cheryl Holmes**  
 CASTO  
 EWI of Columbus  
 cholmes@castoinfo.com



**Director**  
**Christine Laird**  
 Greater OKC Chamber  
 of Commerce  
 EWI of OKC  
 claird@remergeok.org



**Director**  
**Marji Zamora**  
 Speedy Printing  
 EWI of Houston  
 marji@speedyprintingtx.com



**Advisor**  
**Felicia J. Senter**  
 Tulsa Tech  
 EWI of Tulsa  
 felicia.senter@tulsatech.edu

**EWI of Wichita Social Media:**

EwiOfWichita



ewiwichita



Ewiofwichita



ewiofwichita

*Share events, photos, accomplishments and more with EWI  
Wichita Membership in one convenient location! Email social  
media submissions to Pam Dinwiddie at [pdinwiddie@txtav.com](mailto:pdinwiddie@txtav.com)*

Share your news & photos in the monthly  
*Connect*

Contact: Jessica Emrick  
[Jessica.emrick@wichitamarriott.com](mailto:Jessica.emrick@wichitamarriott.com)

**Deadline for May Issue:**  
**May 4, 2021**

**Upcoming Chapter Meetings**

*Third Wednesday of each month  
unless otherwise noted.*

**April Meeting****Wednesday, April 21****Hyatt Place at WSU**

Speaker - Darah Klima -

Regional Sales Manager- Buckle

**Chapter Board Meetings**

*Second Tuesday of each month  
unless otherwise noted.*

**All members are welcome.**

Contact Kristina Helm  
[Kristina@westernassociates.com](mailto:Kristina@westernassociates.com)