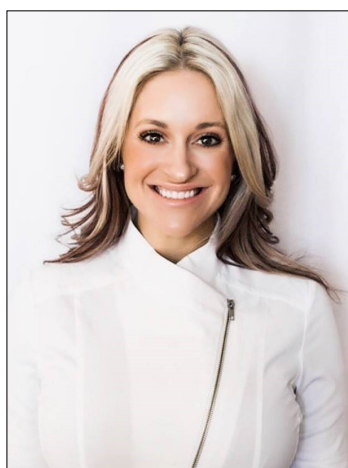


Wichita ewiConnect

EWI Wichita ... Chartered 1970 ... May 2021

A Message From Your EWI President



Kristina Helm- President

What a GREAT TIME OF YEAR! Spring is here (kind of) LOL heading into summer. I want to challenge all of you to ask yourselves what your passion is in EWI and ask yourselves how you can help be more involved next year. Serving on a committee or on the board is such an EXCELLENT way to get involved and learn more about EWI. As we go into nominations for next year's committees/board I would love to challenge all of you to be open to help serve next year. I am so thankful I jumped in the first year I started, it has truly helped me get the most out of EWI.

If you have a question on what or how you can serve, email me.

There is so much to learn, it is ok to have questions. We have an AMAZING event planned for our lunch hour next week- Wednesday May 21st from 11:30-1:00pm. This is going to be an AMAZING panel discussion on Diversity, Equity & Inclusion. Please do not forget to register through Squad Up for this awesome EWI Lunch! July we will be focusing on the AMAZING Non-Profit Organization KIDSCOPE! If you do not know what it is, look them up on line and read through what this AMAZING organization does for Wichita and our surrounding communities. More information to come soon regarding this. I want to encourage all of you to send an email, positive note, text or phone call to someone in EWI this week. Let them know your thinking of them and call just to say hi. Let's help spread POSITIVITY in our chapter!

QUOTE OF THE MONTH: "Happiness is a mood, positivity is a mindset" –Author Unknown

Kristina Helm kristina@westernassociates.com 316.712.3053

2020—2021 Officers & Directors

President

Kristina Helm
Western Associates

Vice President

Davna Gould
HealthCore Clinic

Secretary

Lori Armstrong
Derby Plaza Theaters

Treasurer

Kathy Armbruster
Allen, Gibbs, and Houlik, LLC

Sergeant-at-Arms

Sydney Tuttle
Delta Dental of Kansas, Inc.

Directors-at-Large

Haley Hobbs, Butler County Community College
Theresa Hogan, Stoutheart Financial

Fundraising Directors

Mariah Regier, Sedgwick County Zoo

Communications Directors

Allison Walden, Downing and Lahey Mortuary
Jessica Emrick Davies, Wichita Marriott

Membership Directors

Jan Baggett, Wichita Chamber of Commerce
Valerie Brashears, City of Wichita

Programs Director

Jessica Viramontez, Visit Wichita

Advisor

Pam Dinwiddie, Textron Aviation

President's Message p. 1 ... p. 2-3... Treasurer's Report, Did you Know?
Member Meetings, B2B, Corporate Updates/Directors/Officers, LCAM p. 4-14
Colvin Elementary Reading Rally, Birthdays & Corporate Info p. 15-18

DO YOU HAVE A NEED? Are you in the market looking for a particular service?
Dental Insurance, Event Venues, Hotel, CPA, Financial Planning,
Death Prearrangements, etc? "STOP & SHOP FIRST" with your EWI sisters!!



Send your payments to:

Kathy Armbruster
Allen, Gibbs & Houlik, L.C.
301 N Main St Suite 1700
Wichita, KS 67202
316-291-4139

Chapter Operating Account:

4/1/21 Opening Balance: \$18,900.10

4/30/21 Reconciled Balance: \$20,487.09

Chapter BCDP Account:

4/1/21 Opening Balance \$3,223.28

4/31/21 Reconciled Balance \$1,945.28

MeriTrust Savings Account:

4/1/21 Opening Balance \$24,257.70

4/30/21 Reconciled Balance \$24,258.70

Ameriprise Endowment Account (Stoutheart Financial):

4/1/21 Opening Balance \$75,982.26

4/30/21 Reconciled Balance \$77,909.00

Executive Women International® brings together key individuals from diverse businesses for the purposes of:

Connections - Promoting member firms

Careers - Enhancing personal and professional development

Community - Encouraging community involvement



May Meeting– May 19th at Larkspur Bistro and Bar

Moderator: Dawn Truman, ReeceNichols South Central Kansas;

The Expert Panel included

**Cindy Claycomb, Wichita City Council Member; Kaye Monk-Morgan, Wichita State University
and Amy Williams, Spirit Aerosystems.**

**Diversity Equity and Inclusion -
Powerhouse panel discussions on DEI
initiatives in today's workplace & how
to stay relevant and involved.**





***EWI Corporate* hosts a free monthly Professional Development webinar available to all EWI members?**

When: Tuesday, June 1, 2021 2:00 PM ET

Where: https://ewiconnect.zoom.us/webinar/register/WN_NQm6NXoCT02rNJXLHZCmXw

Contact: Cortney Ihde
cortney@ewiconnect.com 262-269-5625



Kim Becking

Change, uncertainty and disruption are guaranteed – especially now. But growth and progress are not. How you deal with this ever-changing high stress pandemic and post-pandemic world is completely up to you. You have a choice. You can stay stuck or develop a Momentum Mindset® so that you can move forward and grow with grit in the midst of the change and uncertainty.

Kim shares her own stories of resilience in life and business with healthy doses of vulnerability, humor, and motivation and will share how to use resilience to not only navigate and cope during change and uncertainty, but build a Momentum Mindset where you push past limited thinking and use the adversity, change and uncertainty in your life and the world as the fuel needed to propel you forward – stronger and better than before.

Leave this program equipped with the tools you need to transform your mindset to think differently, conquer change and challenges and create the everyday resilience required in this ever-changing complex pandemic world to build momentum and accelerate your success NO MATTER WHAT!

Leave this program learning how to:

- Enhance your ability to adapt to change, deal with the unexpected, and develop greater flexibility
 - Develop key techniques and simple mindset shifts you can use to reduce stress
- Maintain a positive attitude, create more focus, and become more present, productive, engaged, and connected



Early Bird Pricing will save members \$100 by registering by June 30th !

CONFERENCE REGISTRATION

\$650 - Early Bird Ends June 30

\$750 - Regular Registration Ends Sept 10



LCAM²⁰²¹
ewi
Reach Renew Reimagine

LEADERSHIP CONFERENCE & ANNUAL MEETING

Albuquerque, New Mexico | Sheraton Uptown

REGISTRATION OPENS
MARCH 1, 2021

LEADERSHIP CONFERENCE & ANNUAL MEETING

September 16-18, 2021

EWI's Leadership Conference and Annual Meeting (LCAM) is an annual professional development conference where members from our Chapters gather to connect, network and grow professionally through keynote speakers, workshops, seminars, group discussions, and more. During LCAM, delegates also conduct the business of the organization during our annual meeting. We also hold social gatherings, Reading Rally events, recognize our members for their accomplishments, and learn new ideas.

KIM BECKING

Momentum Motivation

KEYNOTE ADDRESS

Resign as General Manager of the Universe: Five Keys to Avoid Burnout and Move from Chaos to Calm



Leadership Conference & Annual Meeting –LCAM Memories

2011 LCAM Minneapolis, MN



Sharon Phillips, Metro Courier; Dawn Truman, JP Weigand; Jan Baggett, Wichita Regional Chamber of Commerce; Candace Parry, Kansas Health Foundation; Helen Nicoli, SJCF Architecture; Carolyn Sayer, Carolyn Sayer's Fine Jewelry; Connie Velghe, Westar Energy; Theresa Hogan, Stoutheart Financial

I went to LCAM in Minneapolis. I can't put into words how valuable the experience was in so many ways. Getting to network with ladies from all over the US was so awesome and really opened my eyes to how large EWI really is and how many resources we have to help us make our Chapter and our careers better. I was able to glean so many ideas for our EWI, was able to bond with our own reps that went, and was able to make so many new friends. Plus there was too much fun. You can probably tell that by the dancing girls picture. That was at the closing Gala that had several impersonators attending – Joan Rivers announced the guests as they were arriving on the red carpet, Bette Midler sang and flitted around the event just being herself, Cyndi Lauper showed up for the dance and karaoke.

I know you want to know if we got to go to the Mall of America. Yes we did and we even got to ride a City Cycle and ride the train. If you ever get the opportunity to attend an LCAM, it's definitely worth it!

Jan Baggett, Wichita Regional Chamber of Commerce



2012 LCAM

*Theresa Hogan, Stoutheart Financial;
Angela Telford, Sedgwick County Zoo;
Helen Nicolj, SJCF Architecture; Risa-
Carter, IFG; Pat Campbell, WSU Founda-
tion; Pam Fullinwider, WSU Foundation.*



2013 LCAM Dallas, TX

Kim Weprin, Associated Integrated Marketing; De Nelson, City of Wichita; Pat Campbell, WSU Foundation; Jenny Stephens, Star Lumber & Supply; Angela Telford, Sedgwick County Zoo; Denise Wickham, Berry Companies; Debbie Pfingsten, Meritrust

2014 LCAM

Washington DC



*Davna Gould, HealthCore Clinic; Debbie Pfingsten, Meritrust;
Angela Telford, Sedgwick County Zoo; Candace Parry, Kansas Health Foundation;
Tracy Lucas, High Touch Technologies; Jenny Stephens, Star Lumber & Supply;
Kim Weprin, Associated Integrated Marketing; Pat Campbell, WSU Foundation*

2015 LCAM

Tulsa, OK

LCAM gave me an opportunity to get to know the women better. Who knew Davna could beat the drums like she did AND Tami Barker can do a mean two step!

Karen Smith, Retired
Evergy Representative



Nancy Umholtz, Delta Dental; Candace Parry, Kansas Health Foundation; Tami Barker, Hyatt Regency; De Nelson, City of Wichita; Karen Smith, Westar; Davna Gould, HealthCore Clinic; Dawn Truman, JP Weigand





*2016 LCAM
Spokane, Washington*

Helen Nicoli, SJCF Architecture; Tracy Lucas, High Touch Technologies; Dawn Truman, JP Weigand; Davna Gould, HealthCore Clinic; Tami Barker, Hyatt Regency

**LCAM 2017
Grapevine, TX**



Dawn Truman, JP Weigand; Jessica Emrick, Wichita Marriott; Gina Hess, Kansas Health Foundation; Tami Barker, Hyatt Regency; Theresa Hogan, Stoutheart Financial; Davna Gould, HealthCore Clinic; Karen Smith, Westar Energy, Teresa Arthur, Commerce Bank



2018 LCAM Raleigh, NC -Davna Gould, HealthCore Clinic; Jessica Emrick, Wichita Marriott; Pam Dinwiddie, Textron Aviation; Gina Hess, Kansas Health Foundation



2019 LCAM Milwaukee, WI Pam Dinwiddie, Textron Aviation; Jessica Emrick Davies, Wichita Marriott, Kristina Helm, Western Associates; Davna Gould, HealthCore Clinic; Gina Hess, Kansas Health Foundation



2020 LCAM WATCH Party –Ashley Kracke, PEC; Kathy Armbruster, AGH LC; Sydney Tuttle, Delta Dental; Pam Dinwiddie, Textron Aviation; Theresa Hogan, Stoutheart Financial; Jan Bagget, Wichita Chamber of Commerce; Annie Life, Wind Surge Baseball; Denise Wickham, Berry Companies; Teresa Arthur, Commerce Bank, not pictured, Jessica Emrick Davies, Wichita Marriott

LCAM FUN FACTS !

2018 –Hurricane Florence hit the coast of North Carolina 4 days before we landed in Raleigh. The plane was full of Red Cross volunteers coming and going. The Red Cross Head-quarter Station was in Raleigh to help the cities that had flooded. It was a great conference! Jessica Emrick Davies, Wichita Marriott.

LCAM TESTIMONIALS

While I learned a lot about how to manage our chapter at LCAM what I got the most out of was spending time with my fellow LCAM friends. I really got to know people and have a good time with them and visit. These ladies became my friends and it made belonging to EWI so much better!! Tami Barker, Past President

The main take away I always have from LCAM is energized, lasting connections and friendships.

I'll never forget when my boss asked if I had a contact with FedEx through EWI and I could proudly say I did. Kristi Emmons-Jones was working at FedEx at the time. I reached out to her and she was able to help me connect my senior vice president with their senior vice president.

Pam Dinwiddie, Textron Aviation

Business to Business Feature



Dr. Jeff Ettling
Executive
President & CEO



Becky Hall
Representative
Office Specialist
Administration



Mariah Regier
Representative
Group Events &
Attractions Coordinator



How long has Sedgwick County Zoo been in the Wichita community?

50 years – We are celebrating our 50th Anniversary this year!

What is the size of Sedgwick County Zoo?

The 224-acre Sedgwick County Zoo opened in 1971 and has been ranked among the best zoos in the world. The Zoo has the 13th largest animal collection in all North American Association of Zoo's & Aquarium facilities. Displaying more than 3,000 animals of nearly 400 species. The collection includes the 13th largest of species and specimens, including amphibians, reptiles, birds and mammals.

The Sedgwick County Zoo is a not-for-profit organization funded through a unique partnership between Sedgwick County government and the Sedgwick County Zoological Society, Inc.

What is Sedgwick County Zoo's mission?

Inspiring respect and conservation of wildlife and wild places.

What is Sedgwick County Zoo's vision statement?

Sedgwick County Zoo – a global leader in conserving wildlife and wild places at home and around the world.

What is an interesting fact about the Zoo that others may not know?

The Sedgwick County Zoo has been recognized with national and internal awards for support of field conservation programs and successful breeding of rare and endangered species.

Business to Business Feature

How can Sedgwick County Zoo assist other EWI firms?

From the drama of the Downing Gorilla Forest to the serenity of the POET Gazebo, we have venues to create an atmosphere your guests will never forget.

Party with the animals at Sedgwick County Zoo! We offer birthday party packages, wedding packages, group visits, or meeting rooms. We'll help you plan all the details so you can relax and enjoy your day.

What has EWI (or connections formed in EWI) provided for the Sedgwick County Zoo?

We have had partnerships with many businesses for events booked at the zoo, providing donation of guest passes or memberships for special events, visiting business associates and their families are encouraged to see the Zoo, and other activities.

How is Sedgwick County Zoo involved in the Wichita community?

Sedgwick County Zoo is the No. 1 outdoor family tourist attraction in Kansas. This brings many people into Wichita for restaurants, shopping, and hotel stays. We are collaborative and inclusive; we support diversity and work-life balance. We hope our commitment to caring for animals at the Sedgwick County Zoo as well as their wild counterparts will spark the same passion and care within our community.

What does the Zoo have planned for the future?

The Sedgwick County Zoo Master Plan envisions more and different animal exhibits and traveling displays. We set high standards for ourselves and expect the same from others.

Who are your mentors and how have they influenced your career?

Becky Hall: Angela Telford, Director of Talent Management, has mentored me at the Zoo and through my EWI membership.

What does the Zoo have coming in the summer months?

Sedgwick County Zoo will have a grand opening of the new Entry and Administration complex on May 27. Ribbon-cutting is at 10:00am.



Also, later this summer we will have the 50th Anniversary Celebration of Sedgwick County Zoo and opening of a new leopard exhibit.

A favorite Wichita, Zoo-bilee, returns this year with everyone wanting to celebrate twice as much for not having the event last year.

EWI READING RALLY *DROP OFF* May 20th at Colvin Elementary

The EWI Reading Rally looked a little different this year! We couldn't meet in person, so we dropped off the bags for the Third Graders to enjoy! Each bag contained School Supplies, 2 Books by Mindy Cook, Dental Kits, T-shirts, Pizza Gift Certificates, & a Juice Box. \$100 Walmart Gift Cards were presented to each 3rd Grade Teacher!

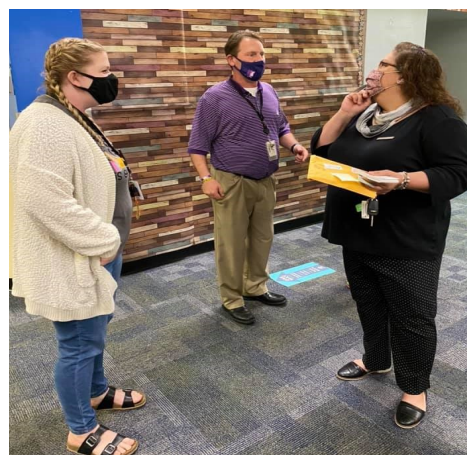


Thank you

Principle Springer for
letting us partner
with you again this
year to
promote LITERACY!



- ☒ **Stoutheart Financial** donated Bags for their goodies, and 1 individual Capri Suns per child.
- ☒ **Commerce Bank** donated School Supplies (8 Count Crayola Markers, Glue Stick, Erasers and 2 pencils)
- ☒ **Murfin Drilling** donated Gift Cards for the 3rd Grade Teachers
- ☒ **Western Associates** provided the T-Shirts
- ☒ **Delta Dental** provided dental kits (floss, toothbrush and paste)
- ☒ Pizza Gift Certificates were provided to the teachers to pass out one for each child to be redeemed on their own. A literacy discount was provided for the purchase of the Personal Pan Pizza certificates. Thank you Fugate Enterprises!





May 8...Jeanetta Bolin

June 10....Ashley Kracke

June 14....Jessica Spain

June 21 Sydney Tuttle

ABOUT EWI

Established in 1938, EWI is a non-profit organization with more than 1,900 member firms and 2,200 representatives in major cities throughout the United States and Canada.

EWI brings members together to promote member firms, to enhance personal and professional development, and to encourage community involvement.

As a premier organization for networking and leadership development for today's business professionals, EWI offers professional development through its Academy of Leadership, scholarships, online learning, and philanthropic initiatives with a focus on literacy.

EWI also provides over 600 board positions to women on the corporate and chapter level annually. For more information, visit ewiconnect.com



Executive Assistant/Office Manager

Cortney Ihde

Work: 262.269.5625

DON'T FORGET

We post the chapter meeting minutes on our EWI Wichita website at: <https://ewiwichita.org/>

EWI Corporate Board of Directors

Our Corporate Board members lead and guide our organization and represent Chapters from across the country. Below is our 2020-2021 board.



Corporate President
Kristi Emmons Jones
 Amare Global
 EWI of Memphis
 kemm64@gmail.com



President-Elect
Christine Healy
 The Printer Inc.
 EWI of Des Moines
 chealy1142@gmail.com



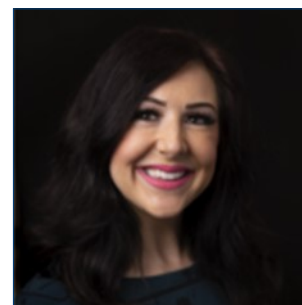
Secretary/Treasurer
Charlie Rosenquist
 Blue Cross/Blue Shield of TN
 EWI of Chattanooga
 charlie_rosenquist@bcbst.com



Director
Kathy Scott
 Balls Foods
 EWI of Kansas City
 46director@ballsfoods.com



Director
Cheryl Holmes
 CASTO
 EWI of Columbus
 cholmes@castoinfo.com



Director
Christine Laird
 Greater OKC Chamber
 of Commerce
 EWI of OKC
 claird@remergeok.org



Director
Marji Zamora
 Speedy Printing
 EWI of Houston
 marji@speedyprintingtx.com



Advisor
Felicia J. Senter
 Tulsa Tech
 EWI of Tulsa
 felicia.senter@tulsatech.edu

EWI of Wichita Social Media:

EwiOfWichita



ewiwichita



Ewiofwichita



ewiofwichita

Share events, photos, accomplishments and more with EWI Wichita Membership in one convenient location! Email social media submissions to Pam Dinwiddie at pdinwiddie@txtav.com

Share your news & photos in the monthly
Connect

Contact: Jessica Emrick
Jessica.emrick@wichitamariott.com

Deadline for June Issue:
June 1, 2021

Upcoming Chapter Meetings

*Third Wednesday of each month
unless otherwise noted.*

May Lunch Meeting

Wednesday, May 19th @ 11:30am

Diversity Equity Inclusion

Panel Speakers

Larkspur Bistro

June Fundraiser Meeting

June 16th

Wichita Marriott

5:30pm-7:30pm

Chapter Board Meetings

*Second Tuesday of each month
unless otherwise noted.*

All members are welcome.

Contact Kristina Helm
Kristina@westernassociates.com