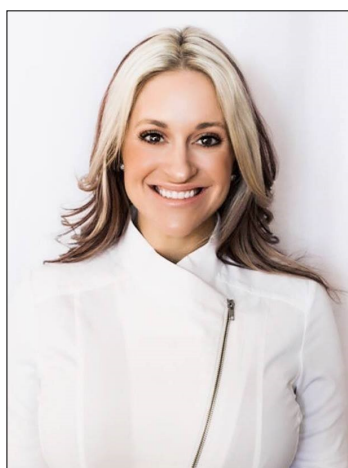


# Wichita ewiConnect

EWI Wichita ... Chartered 1970 ... June 2021

## *A Message From Your EWI President-Kristina Helm*



QUOTE OF THE MONTH: "Today only happens once, make it AMAZING"- Author Unknow

HELLO EVERYONE! I am so excited for our June Fundraiser Trivia night Wednesday 6/16. I hope to see everyone there! I wanted to send out a special thank you to our new upcoming board members for 2021-2022 for accepting their positions. An email will be sent out for the entire chapter to vote on shortly. Please keep an eye out. JULY is our month to partner with Kidzcope-please look out for an email with volunteer and donation opportunities. Kidzcope is a non profit under the Wichita Children's Home umbrella that provides for grieving children and their families with community and peer support, ensuring no child ever has to grieve alone. Within their walls, families find comfort, healing and most importantly, HOPE. We have a wonderful opportunity to partner with them in July. Watch for Emails with details forthcoming. Take time to reach out to your fellow EWI sisters to check up on each other this week if you have time. It is always wonderful to hear from each other and catch up. Wahoo!

Kristina Helm

<https://www.squadup.com/events/ewi-of-wichita--june-chapter-meeting-1>

Kristina Helm [kristina@westernassociates.com](mailto:kristina@westernassociates.com) 316.712.3053

### 2020—2021 Officers & Directors

#### **President**

Kristina Helm  
Western Associates

#### **Vice President**

Davna Gould  
HealthCore Clinic

#### **Secretary**

Lori Armstrong  
Derby Plaza Theaters

#### **Treasurer**

Kathy Armbruster  
Allen, Gibbs, and Houlik, LLC

#### **Sergeant-at-Arms**

Sydney Tuttle  
Delta Dental of Kansas, Inc.

#### **Directors-at-Large**

Haley Hobbs, Butler County Community College  
Theresa Hogan, Stoutheart Financial

#### **Fundraising Directors**

Mariah Regier, Sedgwick County Zoo

#### **Communications Directors**

Allison Walden, Downing and Lahey Mortuary  
Jessica Emrick Davies, Wichita Marriott

#### **Membership Directors**

Jan Baggett, Wichita Chamber of Commerce  
Valerie Brashears, City of Wichita

#### **Programs Director**

Jessica Viramontez, Visit Wichita

#### **Advisor**

Pam Dinwiddie, Textron Aviation

President's Message p. 1 ... p.

2-3... Treasurer's Report, Did you Know?

Member Meetings, B2B, Corporate Updates/Directors/Officers, LCAM p. 4-14

DO YOU HAVE A NEED? Are you in the market looking for a particular service?  
Dental Insurance, Event Venues, Hotel, CPA, Financial Planning,  
Death Prearrangements, etc? "STOP & SHOP FIRST" with your EWI sisters!!



Send your payments to:

Kathy Armbruster  
Allen, Gibbs & Houlik, L.C.  
301 N Main St Suite 1700  
Wichita, KS 67202  
316-291-4139

**Chapter Operating Account:**

5/1/21 Opening Balance: \$20,487.09

5/31/21 Reconciled Balance: \$20,118.81

**Chapter BCDP Account:**

5/1/21 Opening Balance \$1,945.28

5/31/21 Reconciled Balance \$1,743.28

**MeriTrust Savings Account:**

5/1/21 Opening Balance \$24,258.70

5/31/21 Reconciled Balance \$24,259.73

**Ameriprise Endowment Account (Stoutheart Financial):**

5/1/21 Opening Balance \$77,909.00

5/31/21 Reconciled Balance \$78,450.48

Executive Women International® brings together key individuals from diverse businesses for the purposes of:

**Connections** - Promoting member firms

**Careers** - Enhancing personal and professional development

**Community** - Encouraging community involvement



EWI Wichita Presents



# TRIVIA NIGHT

Wednesday, June 16th  
5:30 - 7:30 PM

## PRIZES FOR WINNING TEAM

 QUIZ RUNNER TRIVIA | WINE PULL EVENT - \$20  
| GIFT CARD SILENT AUCTION-5 TICKETS=\$20  
OR 1 TICKET = \$5 | 

Please bring guests to join us at this fun event!

CASH OR CHECK ONLY

Register here:

<https://www.squadup.com/events/ewi-of-wichita--june-chapter-meeting-1>

Wichita Marriott | 9100 E Corporate  
Hills Dr. | Wichita, KS 67207

<https://www.squadup.com/events/ewi-of-wichita--june-chapter-meeting-1>

EWI FUNDRAISING

# GIFT CARD DONATION REQUEST

Please consider donating a gift card for our fundraising meeting Gift Card Grab game!

\$10 minimum value

Any type of gift card/certificate is accepted!

## GIFT CARD GRAB

\$10 to play

Randomly choose a mystery box to reveal what gift card you've won  
All money raised goes to EWI BCDP fund.



# SPOTLIGHT



**Don Sherman with Evergy** will be honored  
at the  
Junior Achievement Business Hall of Fame Dinner

***Julie Simon has accepted the promotion  
to Private Banking Manager at  
Meritrust Credit Union***





# Business to Business Feature



Susie Santo  
Executive



Jessica Viramontez  
Representative

## **How long has Visit Wichita been in the Wichita community?**

Visit Wichita was formed as an independent organization in 1980; prior to that we were part of the Chamber of Commerce.

## **What is the size of Visit Wichita?**

15 employees & 1 summer intern.

## **What is Visit Wichita's mission?**

The mission of Visit Wichita is to market the Greater Wichita area and to advocate for the city as a destination, increasing travel and tourism as a key economic driver of the city, county, region and state.

## **How can Visit Wichita assist other EWI firms?**

Visit Wichita can assist EWI firms with planning and/or servicing any sort of meeting, convention or event their company hosts here in Wichita. Whether it's sourcing hotel meeting space and sleeping rooms on behalf of the company or assisting with all aspects of planning a successful event.



# Business to Business Feature

## How is Visit Wichita involved in the Wichita Community?

Visit Wichita works to attract meetings, conventions, sports events and leisure travel to Wichita and the new dollars that come from those efforts mean economic development for the city and the entire region. We support over 450 organization and business partners with marketing opportunities, travel and tourism information and advocacy efforts on a range of issues.

## What has EWI (or connections formed in EWI) provided for your company?

EWI has given Visit Wichita the opportunity to make connections with many different, diverse firms that are represented within our chapter. It's great to know how our firms can support one another, connect fellow members with other organizations that can provide support...it's just a really nice group to be a part of and really gives us a sense of community.

## What's an interesting fact about Visit Wichita that others may not know?

Direct spending associated with travel and tourism was over \$1.2B in 2019 and supported over 13,500 jobs in the five-county MSA (metropolitan statistical areas).

## What makes Visit Wichita stand apart from your competitors?

We have always prided ourselves on being a very customer-service oriented organization and I hear from meeting planners all the time about how they love to work with our sales and service team at Visit Wichita. Our hotel partners and venues are just as focused on service, so we offer a really compelling experience.

## What does Visit Wichita have planned for the future?

We are currently working hard to get visitors back to Wichita to help sustain and build our great local businesses who have suffered so much through the pandemic. Check out our website for information on our Places, Faces, Hearts digital campaign and be sure to look out for our new TV commercials which just launched this week! <https://www.visitwichita.com/faces-places-heart/>







Early Bird Pricing will save members \$100 by registering by June 30th !

## CONFERENCE REGISTRATION

\$650 - Early Bird Ends June 30

\$750 - Regular Registration Ends Sept 10



LCAM<sup>2021</sup>  
*ewi*  
Reach Renew Reimagine

### LEADERSHIP CONFERENCE & ANNUAL MEETING

Albuquerque, New Mexico | Sheraton Uptown

REGISTRATION OPENS  
MARCH 1, 2021

## LEADERSHIP CONFERENCE & ANNUAL MEETING

September 16-18, 2021

EWI's Leadership Conference and Annual Meeting (LCAM) is an annual professional development conference where members from our Chapters gather to connect, network and grow professionally through keynote speakers, workshops, seminars, group discussions, and more. During LCAM, delegates also conduct the business of the organization during our annual meeting. We also hold social gatherings, Reading Rally events, recognize our members for their accomplishments, and learn new ideas.

**KIM BECKING**

Momentum Motivation

### KEYNOTE ADDRESS

Resign as General Manager of the Universe: Five Keys to  
Avoid Burnout and Move from Chaos to Calm



## Leadership Conference & Annual Meeting –LCAM Memories

### *2011 LCAM Minneapolis, MN*



*Sharon Phillips, Metro Courier; Dawn Truman, JP Weigand; Jan Baggett, Wichita Regional Chamber of Commerce; Candace Parry, Kansas Health Foundation; Helen Nicoli, SJCF Architecture; Carolyn Sayer, Carolyn Sayer's Fine Jewelry; Connie Velghe, Westar Energy; Theresa Hogan, Stoutheart Financial*

I went to LCAM in Minneapolis. I can't put into words how valuable the experience was in so many ways. Getting to network with ladies from all over the US was so awesome and really opened my eyes to how large EWI really is and how many resources we have to help us make our Chapter and our careers better. I was able to glean so many ideas for our EWI, was able to bond with our own reps that went, and was able to make so many new friends. Plus there was too much fun. You can probably tell that by the dancing girls picture. That was at the closing Gala that had several impersonators attending – Joan Rivers announced the guests as they were arriving on the red carpet, Bette Midler sang and flitted around the event just being herself, Cyndi Lauper showed up for the dance and karaoke.

I know you want to know if we got to go to the Mall of America. Yes we did and we even got to ride a City Cycle and ride the train. If you ever get the opportunity to attend an LCAM, it's definitely worth it!

Jan Baggett, Wichita Regional Chamber of Commerce





## 2012 LCAM

*Theresa Hogan, Stoutheart Financial;  
Angela Telford, Sedgwick County Zoo;  
Helen Nicolj, SJCF Architecture; Risa-  
Carter, IFG; Pat Campbell, WSU Founda-  
tion; Pam Fullinwider, WSU Foundation.*



## 2013 LCAM Dallas, TX

Kim Weprin, Associated Integrated Marketing; De Nelson, City of Wichita; Pat Campbell, WSU Foundation; Jenny Stephens, Star Lumber & Supply; Angela Telford, Sedgwick County Zoo; Denise Wickham, Berry Companies; Debbie Pfingsten, Meritrust



## 2014 LCAM

### Washington DC



*Davna Gould, HealthCore Clinic; Debbie Pfingsten, Meritrust;  
Angela Telford, Sedgwick County Zoo; Candace Parry, Kansas Health Foundation;  
Tracy Lucas, High Touch Technologies; Jenny Stephens, Star Lumber & Supply;  
Kim Weprin, Associated Integrated Marketing; Pat Campbell, WSU Foundation*

## 2015 LCAM

### Tulsa, OK

LCAM gave me an opportunity to get to know the women better. Who knew Davna could beat the drums like she did AND Tami Barker can do a mean two step!

Karen Smith, Retired  
Evergry Representative



*Nancy Umholtz, Delta Dental; Candace Parry, Kansas Health Foundation; Tami Barker, Hyatt Regency; De Nelson, City of Wichita; Karen Smith, Westar; Davna Gould, HealthCore Clinic; Dawn Truman, JP Weigand*







## 2016 LCAM

*Spokane, Washington*

*Helen Nicoli, SJCF Architecture; Tracy Lucas, High Touch Technologies; Dawn Truman, JP Weigand; Davna Gould, HealthCore Clinic; Tami Barker, Hyatt Regency*

## LCAM 2017

*Grapevine, TX*



*Dawn Truman, JP Weigand; Jessica Emrick, Wichita Marriott; Gina Hess, Kansas Health Foundation; Tami Barker, Hyatt Regency; Theresa Hogan, Stoutheart Financial; Davna Gould, HealthCore Clinic; Karen Smith, Westar Energy; Teresa Arthur, Commerce Bank*





**2018 LCAM Raleigh, NC** -Davna Gould, HealthCore Clinic; Jessica Emrick, Wichita Marriott; Pam Dinwiddie, Textron Aviation; Gina Hess, Kansas Health Foundation



**2019 LCAM Milwaukee, WI** Pam Dinwiddie, Textron Aviation; Jessica Emrick Davies, Wichita Marriott, Kristina Helm, Western Associates; Davna Gould, HealthCore Clinic; Gina Hess, Kansas Health Foundation



**2020 LCAM WATCH Party** –Ashley Kracke, PEC; Kathy Armbruster, AGH LC; Sydney Tuttle, Delta Dental; Pam Dinwiddie, Textron Aviation; Theresa Hogan, Stoutheart Financial; Jan Bagget, Wichita Chamber of Commerce; Annie Life, Wind Surge Baseball; Denise Wickham, Berry Companies; Teresa Arthur, Commerce Bank, not pictured, Jessica Emrick Davies, Wichita Marriott

### **LCAM FUN FACTS !**

**2018 –Hurricane Florence hit the coast of North Carolina 4 days before we landed in Raleigh. The plane was full of Red Cross volunteers coming and going. The Red Cross Head-quarter Station was in Raleigh to help the cities that had flooded. It was a great conference! Jessica Emrick Davies, Wichita Marriott.**

### **LCAM TESTIMONIALS**

While I learned a lot about how to manage our chapter at LCAM what I got the most out of was spending time with my fellow LCAM friends. I really got to know people and have a good time with them and visit. These ladies became my friends and it made belonging to EWI so much better!! Tami Barker, Past President

**The main take away I always have from LCAM is energized, lasting connections and friendships.**

**I'll never forget when my boss asked if I had a contact with FedEx through EWI and I could proudly say I did. Kristi Emmons-Jones was working at FedEx at the time. I reached out to her and she was able to help me connect my senior vice president with their senior vice president.**

**Pam Dinwiddie, Textron Aviation**



## EWI READING RALLY *DROP OFF* May 20th at Colvin Elementary

*The EWI Reading Rally looked a little different this year! We couldn't meet in person, so we dropped off the bags for the Third Graders to enjoy! Each bag contained School Supplies, 2 Books by Mindy Cook, Dental Kits, T-shirts, Pizza Gift Certificates, & a Juice Box. \$100 Walmart Gift Cards were presented to each 3rd Grade Teacher!*



Thank you

Principle Springer for  
letting us partner  
with you again this  
year to  
promote LITERACY!



☑ **Stoutheart Financial** donated Bags for their goodies, and 1 individual Capri Suns per child.

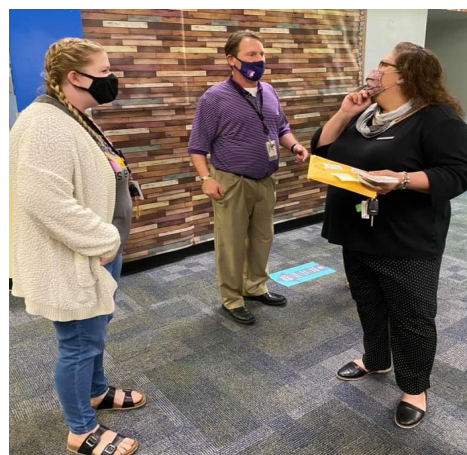
☑ **Commerce Bank** donated School Supplies (8 Count Crayola Markers, Glue Stick, Erasers and 2 pencils)

☑ **Murfin Drilling** donated Gift Cards for the 3rd Grade Teachers

☑ **Western Associates** provided the T-Shirts

☑ **Delta Dental** provided dental kits (floss, toothbrush and paste)

☑ Pizza Gift Certificates were provided to the teachers to pass out one for each child to be redeemed on their own. A literacy discount was provided for the purchase of the Personal Pan Pizza certificates. Thank you Fugate Enterprises!







**June 10....Ashley Kracke**

**June 14....Jessica Spain**

**June 21 ...Sydney Tuttle**

**July 12...Barbara McCurdy**

**July 14...Monique Boyd**

**July 22..Pam Dinwiddie**

**July 25...Sally Rose**

**July 28...Tami Portela**

#### **ABOUT EWI**

Established in 1938, EWI is a non-profit organization with more than 1,900 member firms and 2,200 representatives in major cities throughout the United States and Canada.

EWI brings members together to promote member firms, to enhance personal and professional development, and to encourage community involvement.

As a premier organization for networking and leadership development for today's business professionals, EWI offers professional development through its Academy of Leadership, scholarships, online learning, and philanthropic initiatives with a focus on literacy.

EWI also provides over 600 board positions to women on the corporate and chapter level annually. For more information, visit [ewiconnect.com](http://ewiconnect.com)



**Executive Assistant/Office Manager**

**Cortney Ihde**

Work: 262.269.5625

#### **DON'T FORGET**

We post the chapter meeting minutes on our EWI Wichita website at: <https://ewiwichita.org/>

## ***EWI Corporate Board of Directors***

Our Corporate Board members lead and guide our organization and represent Chapters from across the country. Below is our 2020-2021 board.



**Corporate President**  
**Kristi Emmons Jones**  
 Amare Global  
 EWI of Memphis  
 kemm64@gmail.com



**President-Elect**  
**Christine Healy**  
 The Printer Inc.  
 EWI of Des Moines  
 chealy1142@gmail.com



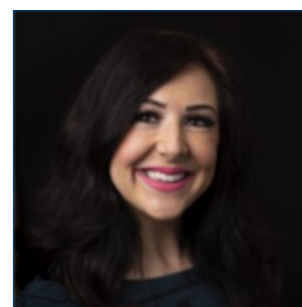
**Secretary/Treasurer**  
**Charlie Rosenquist**  
 Blue Cross/Blue Shield of TN  
 EWI of Chattanooga  
 charlie\_rosenquist@bcbst.com



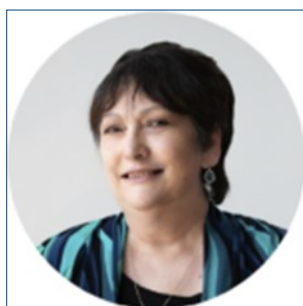
**Director**  
**Kathy Scott**  
 Balls Foods  
 EWI of Kansas City  
 46director@ballsfoods.com



**Director**  
**Cheryl Holmes**  
 CASTO  
 EWI of Columbus  
 cholmes@castoinfo.com



**Director**  
**Christine Laird**  
 Greater OKC Chamber  
 of Commerce  
 EWI of OKC  
 claird@remergeok.org



**Director**  
**Marji Zamora**  
 Speedy Printing  
 EWI of Houston  
 marji@speedyprintingtx.com



**Advisor**  
**Felicia J. Senter**  
 Tulsa Tech  
 EWI of Tulsa  
 felicia.senter@tulsatech.edu

**EWI of Wichita Social Media:**

EwiOfWichita



ewiwichita



Ewiofwichita



ewiofwichita

*Share events, photos, accomplishments and more with EWI Wichita Membership in one convenient location! Email social media submissions to Pam Dinwiddie at [pdinwiddie@txtav.com](mailto:pdinwiddie@txtav.com)*

Share your news & photos in the monthly  
*Connect*

Contact: Jessica Emrick  
[Jessica.emrick@wichitamariott.com](mailto:Jessica.emrick@wichitamariott.com)

**Deadline for July Issue:**  
**July 6, 2021**

**Upcoming Chapter Meetings**

*Third Wednesday of each month  
unless otherwise noted.*

**June Fundraiser Meeting**

**June 16th**

**Wichita Marriott**

**5:30pm-7:30pm**

**July –Kidzcope  
Volunteer Opportunity**

**Executive's Night**

**Wednesday, August 11th**

***NOTE: Second Wednesday of August***

**Chapter Board Meetings**

*Second Tuesday of each month  
unless otherwise noted.*

**All members are welcome.**

Contact Kristina Helm  
[Kristina@westernassociates.com](mailto:Kristina@westernassociates.com)