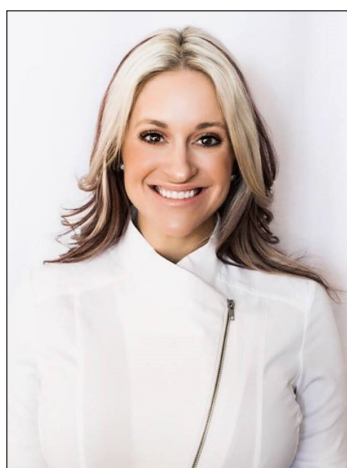




EWI Wichita ... Chartered 1970 ... July 2021

A Message From Your EWI President-Kristina Helm



HELLO THERE! I am SUPER EXCITED to be highlighting KIDZCOPE this month! If you have not heard of Kidzcope (under the Wichita Children's Home umbrella), please check them out online to see all the wonderful services they provide in our community. We have opportunities to help donate time or money to this wonderful cause this month. If you would like to donate please email me and let me know. You can sign up to help serve food July 16th OR 30th. Please consider donating funds to their organization or donating your time to help with their office needs. They're looking for help with office systems, protocols and day to day operational help. I will directly contact the ladies who said they would like to help, with more information.

QUOTE OF THE MONTH: "Today only happens once, make it AMAZING"- Author Unknown

Please remember Executive Night is coming up August 11th, be sure to remind your executives to join you for this wonderful evening where we recap the last year of EWI Wichita as well as award our scholarship winner. It has been a wonderful year ladies, excited to share all our highlights at Executive Night! Wahoo!

Kristina Helm kristina@westernassociates.com 316.712.3053

2020—2021 Officers & Directors

President

Kristina Helm
Western Associates

Vice President

Davna Gould
HealthCore Clinic

Secretary

Lori Armstrong
Derby Plaza Theaters

Treasurer

Kathy Armbruster
Allen, Gibbs, and Houlik, LLC

Sergeant-at-Arms

Sydney Tuttle
Delta Dental of Kansas, Inc.

Directors-at-Large

Haley Hobbs, Butler County Community College
Theresa Hogan, Stoutheart Financial

Fundraising Directors

Mariah Regier, Sedgwick County Zoo

Communications Directors

Allison Walden, Downing and Lahey Mortuary
Jessica Emrick Davies, Wichita Marriott

Membership Directors

Jan Baggett, Wichita Chamber of Commerce
Valerie Brashears, City of Wichita

Programs Director

Jessica Viramontez, Visit Wichita

Advisor

Pam Dinwiddie, Textron Aviation

President's Message p. 1 ... p. 2-3... Treasurer's Report, Food for Thought
Kidzcope, Executive Night, Spotlight, LCAM, Corporate Updates/Directors/Officers, LCAM,
Birthdays & Corporate Info p. 4-18

DO YOU HAVE A NEED? Are you in the market looking for a particular service?
Dental Insurance, Event Venues, Hotel, CPA, Financial Planning,
Death Prearrangements, etc? "STOP & SHOP FIRST" with your EWI sisters!!



Send your payments to:

Kathy Armbruster
Allen, Gibbs & Houlik, L.C.
301 N Main St Suite 1700
Wichita, KS 67202
316-291-4139

Chapter Operating Account:

6/1/21 Opening Balance: \$20,118.81

6/30/21 Reconciled Balance: \$21,267.06

Deposits:

- April Meeting Fees \$865.00

March Fireside Fundraisers \$175.00

- Chapter Membership Dues \$230.00

Expenses:

- Web hosting and maintenance \$108.75

- ACH funds transfer fees - \$13.00

Chapter BCDP Account:

6/1/21 Opening Balance \$1,743.28

6/30/21 Reconciled Balance \$2,143.28

Deposits: -

1. - \$500.00 Trivia Night fundraiser proceeds

Expenses: -

2. - \$100.00 reimburse Jessica Emrick for Reading Rally gift cards.

MeriTrust Savings Account:

6/1/21 Opening Balance \$24,259.73

6/30/21 Reconciled Balance \$24,260.73

June Dividend Paid: \$ 1.00

Ameriprise Endowment Account (Stoutheart Financial):

6/1/21 Opening Balance \$78,450.48

6/30/21 Reconciled Balance \$79,331.97

Executive Women International® brings together key individuals from diverse businesses for the purposes of:

Connections - Promoting member firms

Careers - Enhancing personal and professional development

Community - Encouraging community involvement

YOU GLOW
DIFFERENTLY
WHEN YOU'RE
HAPPY



FOOD FOR THOUGHT....

Struggling with Happiness?

BUILDING A HAPPINESS HABIT

How much happiness I feel is solely based on my habitual responses to life. I believe I have a choice on how much joy I experience in my life. Though I may not be able to control what happens in my life, I can always choose my reactions.

I practice looking for what is right in my life. This helps me build a habit of happiness. I practice smiling with my mouth and my eyes because my physiology changes my state and can make me feel better.

I don't try to fake happiness, instead I practice cultivating mind habits that help me feel it organically.

This is how I can create a long- lasting habit of happiness – I hope you will give it a try....

Valerie Brashears

July's Philanthropic Opportunity to benefit KIDZCOPE & Wichita Children's Home

KIDZCOPE SERVICES: At no cost to the family, children (ages 3-18) and their caregivers learn and grow while being surrounded by a supportive network of other individuals of like ages who are also facing the loss of a loved one. Through various forms of expressive arts and discussion-based activities led by trained volunteer facilitators, supported by a licensed grief counselor, children and families have the necessary support through the healing journey.

The 9-week program provides services to families from all-over South-Central Kansas. Every child's path to hope and healing is different. Because of the great community support, Kidzcope is able to serve grieving children and families **at no cost**. Kidzcope provides healing and counseling services through the generosity of volunteers, donors and community partners.

Please see list below of volunteer/donation opportunities. Please email Kristina Helm and Jessica V. separately to let us know what we can help sign you up for. There is only so much room for certain volunteers so we will have to help spread out what we do. **SPECIAL NOTE:** If you have already volunteered before with the Wichita Children's Home, you are already approved to help with some activities separately from what I will list below. Please email me if you have already volunteered for them, we have other opportunities open to you, per you have already passed their background check.

JULY VOLUNTEER OPPORTUNITIES:

7/16: Hiawatha Camp & Retreat Center

Time: 6-9pm

Description: Volunteer to help serve food, help with hospitality and greeting as well as cleaning up. This a three hour or less volunteer slot.

5 Volunteer Slots Available

7/30: Hiawatha Camp & Retreat Center

Time: 6-9pm

Description: Volunteer to help serve food, help with hospitality and greeting as well as cleaning up. This a three hour or less volunteer slot.

5 Volunteer Slots Available:

DONATION Request: EWI will provide 25 Low Maintenance Plants for 1st Camp and the 2nd Camp

VOLUNTEER TIME: Kidzcope needs some office help with spreadsheets (someone good with Excel), as well as help with office needs. If you're willing to help donate a few hours of your time to help with some of these projects they would be VERY THANKFUL! Email Kristina Helm if this interests you and she will provide more information.



WICHITA

PLEASE JOIN US FOR

Executive Night

Wednesday, August 11th 2021

5:30-7:30 PM

WICHITA MARRIOTT
9100 E CORPORATE HILLS DR
WICHITA, KS 67207





SPOTLIGHT

EWISP Scholarship



2021 EWI – Wichita Chapter
Recipient

Maria graduated in May from
Trinity Catholic High School in
Hutchinson.

College: University of Dallas

Degree: Fine Arts and Business

Goal: Become an Independent
Studio Artist and Entrepreneur.



CONNECTIONS | CAREERS | COMMUNITY



Early Bird Pricing will save members \$100 by registering by June 30th !

CONFERENCE REGISTRATION

\$750 - Regular Registration Ends Sept 10



LEADERSHIP CONFERENCE & ANNUAL MEETING

Albuquerque, New Mexico | Sheraton Uptown

REGISTRATION OPENS
MARCH 1, 2021

LEADERSHIP CONFERENCE & ANNUAL MEETING

September 16-18, 2021

EWI's Leadership Conference and Annual Meeting (LCAM) is an annual professional development conference where members from our Chapters gather to connect, network and grow professionally through keynote speakers, workshops, seminars, group discussions, and more. During LCAM, delegates also conduct the business of the organization during our annual meeting. We also hold social gatherings, Reading Rally events, recognize our members for their accomplishments, and learn new ideas.

KIM BECKING

Momentum Motivation

KEYNOTE ADDRESS

Resign as General Manager of the Universe: Five Keys to Avoid Burnout and Move from Chaos to Calm



Leadership Conference & Annual Meeting –LCAM Memories

2011 LCAM Minneapolis, MN



Sharon Phillips, Metro Courier; Dawn Truman, JP Weigand; Jan Baggett, Wichita Regional Chamber of Commerce; Candace Parry, Kansas Health Foundation; Helen Nicoli, SJCF Architecture; Carolyn Sayer, Carolyn Sayer's Fine Jewelry; Connie Velghe, Westar Energy; Theresa Hogan, Stoutheart Financial

I went to LCAM in Minneapolis. I can't put into words how valuable the experience was in so many ways. Getting to network with ladies from all over the US was so awesome and really opened my eyes to how large EWI really is and how many resources we have to help us make our Chapter and our careers better. I was able to glean so many ideas for our EWI, was able to bond with our own reps that went, and was able to make so many new friends. Plus there was too much fun. You can probably tell that by the dancing girls picture. That was at the closing Gala that had several impersonators attending – Joan Rivers announced the guests as they were arriving on the red carpet, Bette Midler sang and flitted around the event just being herself, Cyndi Lauper showed up for the dance and karaoke.

I know you want to know if we got to go to the Mall of America. Yes we did and we even got to ride a City Cycle and ride the train. If you ever get the opportunity to attend an LCAM, it's definitely worth it!

Jan Baggett, Wichita Regional Chamber of Commerce



2012 LCAM

*Theresa Hogan, Stoutheart Financial;
Angela Telford, Sedgwick County Zoo;
Helen Nicoli, SJCF Architecture; Risa-
Carter, IFG; Pat Campbell, WSU Founda-
tion; Pam Fullinwider, WSU Foundation.*



2013 LCAM Dallas, TX

Kim Weprin, Associated Integrated Marketing; De Nelson, City of Wichita; Pat Campbell, WSU Foundation; Jenny Stephens, Star Lumber & Supply; Angela Telford, Sedgwick County Zoo; Denise Wickham, Berry Companies; Debbie Pfingsten, Meritrust

2014 LCAM

Washington DC



*Davna Gould, HealthCore Clinic; Debbie Pfingsten, Meritrust;
Angela Telford, Sedgwick County Zoo; Candace Parry, Kansas Health Foundation;
Tracy Lucas, High Touch Technologies; Jenny Stephens, Star Lumber & Supply;
Kim Weprin, Associated Integrated Marketing; Pat Campbell, WSU Foundation*

2015 LCAM

Tulsa, OK

LCAM gave me an opportunity to get to know the women better. Who knew Davna could beat the drums like she did AND Tami Barker can do a mean two step!

Karen Smith, Retired
Evergry Representative



Nancy Umholtz, Delta Dental; Candace Parry, Kansas Health Foundation; Tami Barker, Hyatt Regency; De Nelson, City of Wichita; Karen Smith, Westar; Davna Gould, HealthCore Clinic; Dawn Truman, JP Weigand





2016 LCAM

Spokane, Washington

Helen Nicoli, SJCF Architecture; Tracy Lucas, High Touch Technologies; Dawn Truman, JP Weigand; Davna Gould, HealthCore Clinic; Tami Barker, Hyatt Regency

LCAM 2017

Grapevine, TX



Dawn Truman, JP Weigand; Jessica Emrick, Wichita Marriott; Gina Hess, Kansas Health Foundation; Tami Barker, Hyatt Regency; Theresa Hogan, Stoutheart Financial; Davna Gould, HealthCore Clinic; Karen Smith, Westar Energy; Teresa Arthur, Commerce Bank



2018 LCAM Raleigh, NC -Davna Gould, HealthCore Clinic; Jessica Emrick, Wichita Marriott; Pam Dinwiddie, Textron Aviation; Gina Hess, Kansas Health Foundation



2019 LCAM Milwaukee, WI Pam Dinwiddie, Textron Aviation; Jessica Emrick Davies, Wichita Marriott, Kristina Helm, Western Associates; Davna Gould, HealthCore Clinic; Gina Hess, Kansas Health Foundation



2020 LCAM WATCH Party –Ashley Kracke, PEC; Kathy Armbruster, AGH LC; Sydney Tuttle, Delta Dental; Pam Dinwiddie, Textron Aviation; Theresa Hogan, Stoutheart Financial; Jan Bagget, Wichita Chamber of Commerce; Annie Life, Wind Surge Baseball; Denise Wickham, Berry Companies; Teresa Arthur, Commerce Bank, not pictured, Jessica Emrick Davies, Wichita Marriott

LCAM FUN FACTS !

2018 –Hurricane Florence hit the coast of North Carolina 4 days before we landed in Raleigh. The plane was full of Red Cross volunteers coming and going. The Red Cross Head-quarter Station was in Raleigh to help the cities that had flooded. It was a great conference! Jessica Emrick Davies, Wichita Marriott.

LCAM TESTIMONIALS

While I learned a lot about how to manage our chapter at LCAM what I got the most out of was spending time with my fellow LCAM friends. I really got to know people and have a good time with them and visit. These ladies became my friends and it made belonging to EWI so much better!! Tami Barker, Past President

The main take away I always have from LCAM is energized, lasting connections and friendships.

I'll never forget when my boss asked if I had a contact with FedEx through EWI and I could proudly say I did. Kristi Emmons-Jones was working at FedEx at the time. I reached out to her and she was able to help me connect my senior vice president with their senior vice president.

Pam Dinwiddie, Textron Aviation

EWI READING RALLY *DROP OFF* May 20th at Colvin Elementary

The EWI Reading Rally looked a little different this year! We couldn't meet in person, so we dropped off the bags for the Third Graders to enjoy! Each bag contained School Supplies, 2 Books by Mindy Cook, Dental Kits, T-shirts, Pizza Gift Certificates, & a Juice Box. \$100 Walmart Gift Cards were presented to each 3rd Grade Teacher!

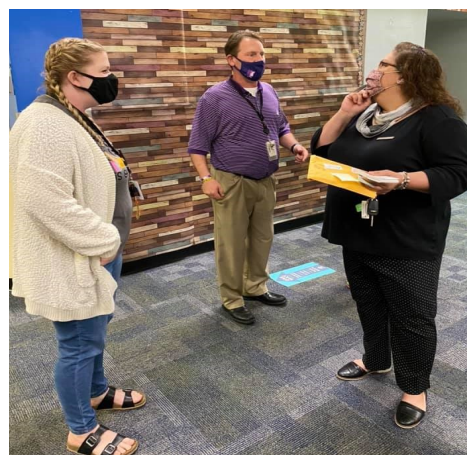


Thank you

Principle Springer for
letting us partner
with you again this
year to
promote LITERACY!



- ☑ **Stoutheart Financial** donated Bags for their goodies, and 1 individual Capri Suns per child.
- ☑ **Commerce Bank** donated School Supplies (8 Count Crayola Markers, Glue Stick, Erasers and 2 pencils)
- ☑ **Murfin Drilling** donated Gift Cards for the 3rd Grade Teachers
- ☑ **Western Associates** provided the T-Shirts
- ☑ **Delta Dental** provided dental kits (floss, toothbrush and paste)
- ☑ Pizza Gift Certificates were provided to the teachers to pass out one for each child to be redeemed on their own. A literacy discount was provided for the purchase of the Personal Pan Pizza certificates. Thank you Fugate Enterprises!





July 12...Barbara McCurdy

July 14...Monique Boyd

July 22..Pam Dinwiddie

July 25...Sally Rose

July 28...Tami Portela

August 7...Valerie Brashears

August 8...Candace Parry

August 18...Mariah Regier

August 23...Denise Wickham

ABOUT EWI

Established in 1938, EWI is a non-profit organization with more than 1,900 member firms and 2,200 representatives in major cities throughout the United States and Canada.

EWI brings members together to promote member firms, to enhance personal and professional development, and to encourage community involvement.

As a premier organization for networking and leadership development for today's business professionals, EWI offers professional development through its Academy of Leadership, scholarships, online learning, and philanthropic initiatives with a focus on literacy.

EWI also provides over 600 board positions to women on the corporate and chapter level annually. For more information, visit ewiconnect.com



Executive Assistant/Office Manager

Cortney Ihde

Work: 262.269.5625

DON'T FORGET

We post the chapter meeting minutes on our EWI Wichita website at: <https://ewiwichita.org/>

EWI Corporate Board of Directors

Our Corporate Board members lead and guide our organization and represent Chapters from across the country. Below is our 2020-2021 board.



Corporate President
Kristi Emmons Jones
 Amare Global
 EWI of Memphis
 kemm64@gmail.com



President-Elect
Christine Healy
 The Printer Inc.
 EWI of Des Moines
 chealy1142@gmail.com



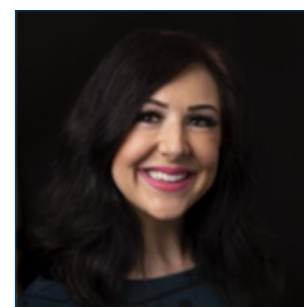
Secretary/Treasurer
Charlie Rosenquist
 Blue Cross/Blue Shield of TN
 EWI of Chattanooga
 charlie_rosenquist@bcbst.com



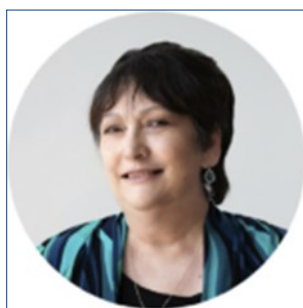
Director
Kathy Scott
 Balls Foods
 EWI of Kansas City
 46director@ballsfoods.com



Director
Cheryl Holmes
 CASTO
 EWI of Columbus
 cholmes@castoinfo.com



Director
Christine Laird
 Greater OKC Chamber
 of Commerce
 EWI of OKC
 claird@remergeok.org



Director
Marji Zamora
 Speedy Printing
 EWI of Houston
 marji@speedyprintingtx.com



Advisor
Felicia J. Senter
 Tulsa Tech
 EWI of Tulsa
 felicia.senter@tulsatech.edu

EWI of Wichita Social Media:

EwiOfWichita



ewiwichita



Ewiofwichita



ewiofwichita

*Share events, photos, accomplishments and more with EWI
Wichita Membership in one convenient location! Email social
media submissions to Pam Dinwiddie at pdinwiddie@txtav.com*

Share your news & photos in the monthly
Connect

Contact: Jessica Emrick
Jessica.emrick@wichitamariott.com

Deadline for August Issue:
August 3, 2021

Upcoming Chapter Meetings

*Third Wednesday of each month
unless otherwise noted.*

**July –Kidzcope
Volunteer Opportunities
July 16th & 30th**

Executive's Night
Wednesday, August 11th
NOTE: Second Wednesday of August

Installation of Officers
Wednesday, September 8th

Chapter Board Meetings
*Second Tuesday of each month
unless otherwise noted.*

All members are welcome.

Contact Kristina Helm
Kristina@westernassociates.com