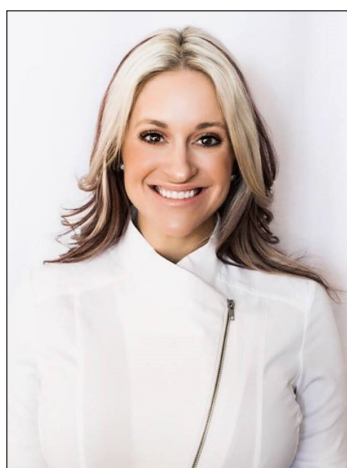


# Wichita ewiConnect

EWI Wichita ... Chartered 1970 ... August 2021

## A Message From Your EWI President-Kristina Helm



QUOTE OF THE MONTH: "There is beauty in simplicity"-  
Author Unknown

Kristina Helm- President

HELLO EVERYONE! A VERY SPECIAL THANK YOU to all who volunteered at the Kidzcope grief camps last month AND those who helped donate funds to the plants and pots for the kids at this camp. The event was a huge success and Kidzcope was so thankful for our help. If you volunteered to help with Kidzcope office needs, an email will go out soon explaining their needs and allowing for sign-ups of anyone interested. I look forward to seeing all of you at Executive Night at the Wichita Marriott Wednesday August 11<sup>th</sup>. Please join us to help congratulation Maria Rodriguez our scholarship winner as well as to reflect on our AMAZING 2020-2021 YEAR! <https://www.squadup.com/events/ewi-of-wichita--july-chapter-meeting-1>

Kristina Helm [kristina@westernassociates.com](mailto:kristina@westernassociates.com) 316.712.3053

## 2020—2021 Officers & Directors

### President

Kristina Helm  
Western Associates

### Vice President

Davna Gould  
HealthCore Clinic

### Secretary

Lori Armstrong  
Derby Plaza Theaters

### Treasurer

Kathy Armbruster  
Allen, Gibbs, and Houlik, LLC

### Sergeant-at-Arms

Sydney Tuttle  
Delta Dental of Kansas, Inc.

### Directors-at-Large

Haley Hobbs, Butler County Community College  
Theresa Hogan, Stoutheart Financial

### Fundraising Directors

Mariah Regier, Sedgwick County Zoo

### Communications Directors

Allison Walden, Downing and Lahey Mortuary  
Jessica Emrick Davies, Wichita Marriott

### Membership Directors

Jan Baggett, Wichita Chamber of Commerce  
Valerie Brashears, City of Wichita

### Programs Director

Jessica Viramontez, Visit Wichita

### Advisor

Pam Dinwiddie, Textron Aviation

President's Message p. 1 ... p. 2-6... Treasurer's Report, B2B, Executive Night, Spotlight,  
P.7-9 LCAM, Kidzcope, p. 10-12 Corporate Updates/Directors/Officers, LCAM,  
Birthdays & Corporate Info

DO YOU HAVE A NEED? Are you in the market looking for a particular service?  
Dental Insurance, Event Venues, Hotel, CPA, Financial Planning,  
Death Prearrangements, etc? "STOP & SHOP FIRST" with your EWI sisters!!



Send your payments to:

Kathy Armbruster  
Allen, Gibbs & Houlik, L.C.  
301 N Main St Suite 1700  
Wichita, KS 67202  
316-291-4139

#### **Chapter Operating Account:**

7/1/21 Opening Balance: \$21,267.06

7/31/21 Reconciled Balance: \$15,835.08

#### **Deposits:**

##### **1. Expenses:**

2. – Web hosting and maintenance \$108.75

3. – Fundraiser funds transferred to BCDP \$2,763.62

4. – LCAM registration \$2075.00 (Pam, Davna, Kristina)

5. – Marriott, June Fundraiser meeting \$964.61

#### **Chapter BCDP Account:**

7/1/21 Opening Balance \$2,143.28

7/31/21 Reconciled Balance \$4,055.57

**Deposits:** - 1. - \$245.00 KidzCope donations

2. - \$2,763.62 – Fundraiser funds transferred from Operation Account

#### **Expenses:** -

3. - \$1,009.78 – t-shirts from Western Associates for Reading Rally

4. - \$86.55 – Credit Card pmt (KidzCope project)

#### **MeriTrust Savings Account:**

7/1/21 Opening Balance \$24,260.73

7/31/21 Reconciled Balance \$24,261.76

**July Interest Paid:** \$ 1.03

#### **Ameriprise Endowment Account (Stoutheart Financial):**

7/1/21 Opening Balance \$79,331.97 7/31/21 Reconciled Baance,651.47

Executive Women International® brings together key individuals from diverse businesses for the purposes of:

**Connections** - Promoting member firms

**Careers** - Enhancing personal and professional development

**Community** - Encouraging community involvement

# Business to Business Feature



Shannon Bohm  
Executive



Allison Le  
Representative



**How long has Schafer Johnson Cox Frey Architecture been in the Wichita community?**

Since June 1, 1957

**What is the size of SJCF?**

We have 44 employees total, the majority of whom are in Wichita, along with an office in Albuquerque, New Mexico.

**What is SJCF's mission?**

To be the trusted team partner for superior architectural design in Kansas and the Midwest Region, thereby creating unique, functional and thoughtful spaces that are iconic to the communities where we work.

**How can SJCF assist other EWI firms?**

We provide not only architectural services but also master planning, feasibility studies, interior design, and more. We are happy to assist with redesigns, furniture selection, renovations, and new construction. Involving us early in a process can ensure you are ready for future building challenges, in compliance with building codes, and proactively seeking solutions that will take your facility well into the future.

**What has EWI (or connections formed in EWI) provided for your company?**



The ability to network. We know we can do great work for clients and have a long list of those who work with us regularly. Being involved in EWI helps us meet new business owners and organizations who may not know how vast our capabilities are and how we can help. EWI also provides another quality opportunity for us to be involved in the community.



### **How is your company involved in the Wichita community?**

Serving on multiple boards and committees that help drive Wichita forward is important to us; therefore, we serve, volunteer and function as thought leaders in our areas of expertise with the Transit Authority, Downtown Wichita, and various school site councils. We also partner with Big Brothers & Big Sisters, United Way, YMCA, Goodwill, Junior Achievement, Episcopal Social Services, GraceMed, and the Rotary Club to serve citizens, raise funds and create opportunity for those in our community.

### **What's an interesting fact about your business that others may not know?**

SJCF has had the honor of designing many Wichita icons, including the Wichita Library, Doc's Hanger & Education Center, Exploration Place, the redesign that expanded the Wichita Art Museum, area YMCAs, the new Riverfront Stadium, the new Southeast and Andover High Schools, and more.

### **What are you doing to mentor women in your industry?**

Fifty percent of SJCF employees are female, a rarity in architecture firms. Even more rare is the fact that our firm is run by a female, President Shannon Bohm, so we take the duty of mentoring women seriously when they join our firm. While a board member for AIA (American Institute of Architects) Wichita, architect and EWI member Allison Le started the Women in Architecture group to support female architects and aspiring architects even though they are not on our team.

### **What makes you stand apart from your competitors?**

SJCF designs with the end in mind. Amazing design is a given, but we also concentrate on how the building is used and the ease of function before we design. We spend time on programming and understanding the needs from all perspectives during that process. Being solution-oriented helps to ensure that we exceed customers' expectations while staying within budget and creating a superior design.

### **What does your company have planned for the future?**

We continue to work with communities throughout Kansas on school, corporate, and recreational projects throughout the region. Internally, our next adventure is remodeling our own offices.





RSVP at <https://www.squadup.com/events/ewi-of-wichita--july-chapter-meeting-1>



# SPOTLIGHT

## EWISP Scholarship



2021 EWI – Wichita Chapter  
Recipient

Maria graduated in May from  
Trinity Catholic High School in  
Hutchinson.

College: University of Dallas

Degree: Fine Arts and Business

Goal: Become an Independent  
Studio Artist and Entrepreneur.





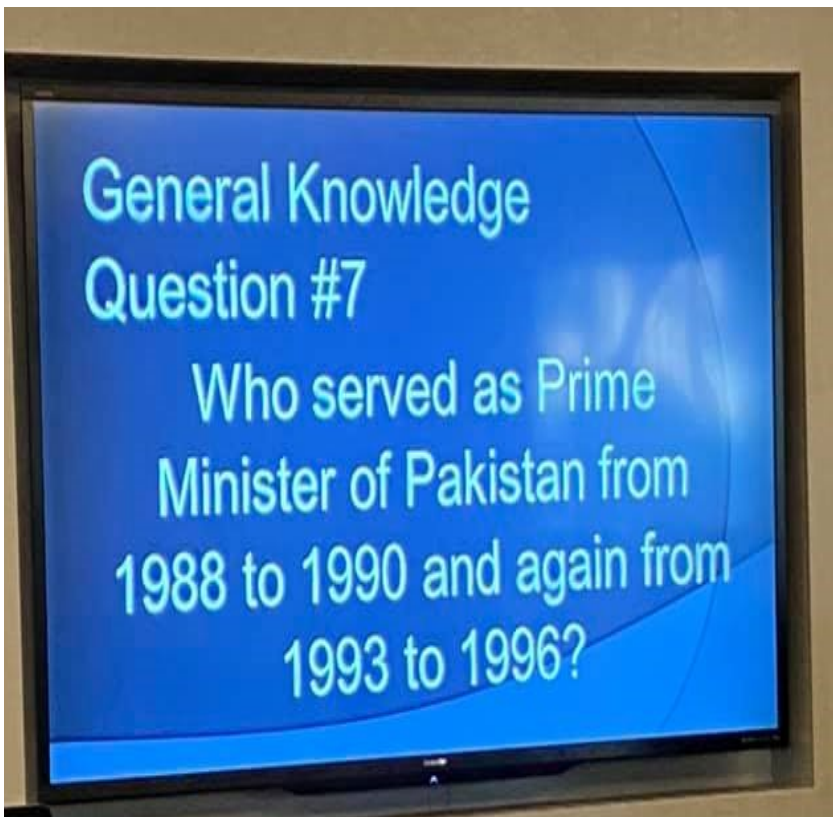
**EWI July Philanthropic Event to benefit  
Kidzcope with Wichita Children's Home**





## June Fundraiser: Trivia Night

## Gift Card Grab & Wine Pull







Early Bird Pricing will save members \$100 by registering by June 30th !

## CONFERENCE REGISTRATION

\$750 - Regular Registration Ends Sept 10



### LEADERSHIP CONFERENCE & ANNUAL MEETING

Albuquerque, New Mexico | Sheraton Uptown

REGISTRATION OPENS  
MARCH 1, 2021

## LEADERSHIP CONFERENCE & ANNUAL MEETING

September 16-18, 2021

EWI's Leadership Conference and Annual Meeting (LCAM) is an annual professional development conference where members from our Chapters gather to connect, network and grow professionally through keynote speakers, workshops, seminars, group discussions, and more. During LCAM, delegates also conduct the business of the organization during our annual meeting. We also hold social gatherings, Reading Rally events, recognize our members for their accomplishments, and learn new ideas.

### KIM BECKING

Momentum Motivation

### KEYNOTE ADDRESS

Resign as General Manager of the Universe: Five Keys to Avoid Burnout and Move from Chaos to Calm





**August 7...Valerie Brashears**

**August 8...Candace Parry**

**August 18...Mariah Regier**

**August 23...Denise Wickham**

**September 5, ...Ann Brady & September 16...De Nelson**

#### **ABOUT EWI**

Established in 1938, EWI is a non-profit organization with more than 1,900 member firms and 2,200 representatives in major cities throughout the United States and Canada.

EWI brings members together to promote member firms, to enhance personal and professional development, and to encourage community involvement.

As a premier organization for networking and leadership development for today's business professionals, EWI offers professional development through its Academy of Leadership, scholarships, online learning, and philanthropic initiatives with a focus on literacy.

EWI also provides over 600 board positions to women on the corporate and chapter level annually. For more information, visit [ewiconnect.com](http://ewiconnect.com)



**Executive Assistant/Office Manager**

**Cortney Ihde**

Work: 262.269.5625  
Personal: 262.443.0814

#### **DON'T FORGET**

We post the chapter meeting minutes on our EWI Wichita website at: <https://ewiwichita.org/>



## ***EWI Corporate Board of Directors***

Our Corporate Board members lead and guide our organization and represent Chapters from across the country. Below is our 2020-2021 board.



**Corporate President**  
**Kristi Emmons Jones**  
 Amare Global  
 EWI of Memphis  
 kemm64@gmail.com



**President-Elect**  
**Christine Healy**  
 The Printer Inc.  
 EWI of Des Moines  
 chealy1142@gmail.com



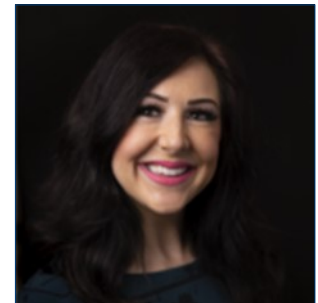
**Secretary/Treasurer**  
**Charlie Rosenquist**  
 Blue Cross/Blue Shield of TN  
 EWI of Chattanooga  
 charlie\_rosenquist@bcbst.com



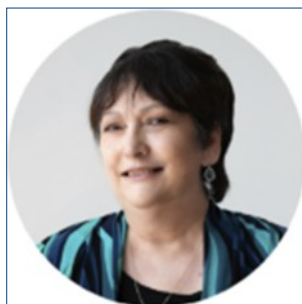
**Director**  
**Kathy Scott**  
 Balls Foods  
 EWI of Kansas City  
 46director@ballsfoods.com



**Director**  
**Cheryl Holmes**  
 CASTO  
 EWI of Columbus  
 cholmes@castoinfo.com



**Director**  
**Christine Laird**  
 Greater OKC Chamber  
 of Commerce  
 EWI of OKC  
 claird@remergeok.org



**Director**  
**Marji Zamora**  
 Speedy Printing  
 EWI of Houston  
 marji@speedyprintingtx.com



**Advisor**  
**Felicia J. Senter**  
 Tulsa Tech  
 EWI of Tulsa  
 felicia.senter@tulsatech.edu

**EWI of Wichita Social Media:**

EwiOfWichita



ewiwichita



Ewiofwichita



ewiofwichita

*Share events, photos, accomplishments and more with EWI  
Wichita Membership in one convenient location! Email social  
media submissions to Pam Dinwiddie at [pdinwiddie@txtav.com](mailto:pdinwiddie@txtav.com)*

Share your news & photos in the monthly  
*Connect*

Contact: Jessica Emrick  
[Jessica.emrick@wichitamariott.com](mailto:Jessica.emrick@wichitamariott.com)

**Deadline for September Issue:  
September 7, 2021**

**Upcoming Chapter Meetings**

*Third Wednesday of each month  
unless otherwise noted.*

**Executive's Night**

**Wednesday, August 11th**

**Wichita Marriott**

**NOTE: Second Wednesday of August**

**Installation of Officers**

**Wednesday, September 8th**

**Crestview Country Club**

**1000 N. 127th Street East**

**Wichita, Ks**

**NOTE: Second Wednesday of September**

**Meritrust Firm Night**

**October 20th**

**Chapter Board Meetings**

*Second Tuesday of each month  
unless otherwise noted.*

**All members are welcome.**

Contact Kristina Helm  
[Kristina@westernassociates.com](mailto:Kristina@westernassociates.com)