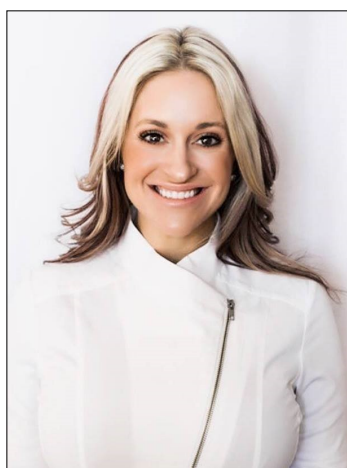


Wichita EWIConnect

EWI Wichita ... Chartered 1970 ... September 2021

A Message From Your EWI President-Kristina Helm



Kristina Helm- President

September is upon us, which means it is time to pass on the role of President EWI Wichita to Davna Gould. I am so thrilled and excited for her upcoming year. I know this will be an AMAZING year of growth in our chapter with Davna as the head. Please help me welcome her and please keep a lookout for her emails and communication updates. Thank you so much for allowing me the opportunity to serve as your President. It has been a pleasure. I know the past year has had its fair share of struggles, but we have also had many successes with-in EWI Wichita. I am so proud of our chapter for continuing to press forward in these times. Remember to share EWI with your friends, such a great way to grow our chapter by inviting them to chapter events. I encourage all of you to jump in and get involved this year. You never know what you are capable of doing until you take a chance and try. EWI Wichita has an amazing year ahead!

QUOTE OF THE
MONTH: “There
is beauty in
simplicity”-
Author Unknown

Kristina Helm kristina@westernassociates.com 316.712.3053

2020—2021 Officers & Directors

President

Kristina Helm
Western Associates

Vice President

Davna Gould
HealthCore Clinic

Secretary

Lori Armstrong
Derby Plaza Theaters

Treasurer

Kathy Armbruster
Allen, Gibbs, and Houlik, LLC

Sergeant-at-Arms

Sydney Tuttle
Delta Dental of Kansas, Inc.

Directors-at-Large

Haley Hobbs, Butler County Community College
Theresa Hogan, Stoutheart Financial

Fundraising Directors

Mariah Regier, Sedgwick County Zoo

Communications Directors

Allison Walden, Downing and Lahey Mortuary
Jessica Emrick Davies, Wichita Marriott

Membership Directors

Jan Baggett, Wichita Chamber of Commerce
Valerie Brashears, City of Wichita

Programs Director

Jessica Viramontez, Visit Wichita

Advisor

Pam Dinwiddie, Textron Aviation

President's Message p. 1 ... p. 2-6... Treasurer's Report, Spotlight,
P.7-10, LCAM, Firm Night Corporate Updates/Directors/Officers, LCAM,
Birthdays & Corporate Info

DO YOU HAVE A NEED? Are you in the market looking for a particular service? Dental Insurance, Event Venues, Hotel, CPA, Financial Planning, Death Prearrangements, etc? "STOP & SHOP FIRST" with your EWI sisters!!



Send your payments to:

Kathy Armbruster
Allen, Gibbs & Houlik, L.C.
301 N Main St Suite 1700
Wichita, KS 67202
316-291-4139

Executive Women International® brings together key individuals from diverse businesses for the purposes of:

Connections - Promoting member firms

Careers - Enhancing personal and professional development

Community - Encouraging community involvement

Chapter Operating Account:

8/1/21 Opening Balance: \$15,835.08

8/31/21 Reconciled Balance: \$13,751.60

Deposits:

- Executive Night \$1485.00
- July meeting fees \$30.00
- June fundraiser \$95.00

Expenses:

- Web hosting and maintenance \$108.75
- ACH transfer fee \$13.00
- LCAM flights \$1,465.23
- Marriott Executive Night \$2074.25
- Scholarship recipient flowers \$32.25

Chapter BCDP Account:

8/1/21 Opening Balance \$4,055.57

8/31/21 Reconciled Balance \$4,055.57

Deposits: -

1. - \$245.00 KidzCope donations
2. - \$2,763.62 - Fundraiser funds transferred from Operation Account

Expenses: -

3. - \$1,009.78 - t-shirts from Western Associates for Reading Rally
4. - \$86.55 - Credit Card pmt (KidzCope project)

MeriTrust Savings Account:

8/1/21 Opening Balance \$24,261.76

8/31/21 Reconciled Balance \$24,262.79

August Interest Paid: \$ 1.03

Ameriprise Endowment Account (Stoutheart Financial):

8/1/21 Opening Balance \$79,651.47

8/31/21 Reconciled Balance \$80,505.83

SPOTLIGHT

EWISP Scholarship



2021 EWI – Wichita Chapter
Recipient

Maria graduated in May from
Trinity Catholic High School in
Hutchinson.

College: University of Dallas

Degree: Fine Arts and Business

Goal: Become an Independent
Studio Artist and Entrepreneur.



CONNECTIONS | CAREERS | COMMUNITY



This Photo by Unknown Author is licensed under [CC BY-NC](#)



Marketing Awards honoree for the Wichita Business Journal

**DAVNA GOULD 2021 Marketing Awards Candidate : Davna Gould, HealthCore Clinic
CHIEF MARKETING/COMMUNICATIONS OFFICER
HEALTHCORE CLINIC**

What are your professional responsibilities? At HealthCore Clinic I am responsible for the overall marketing and communication plan, in addition I oversee outreach and facilities departments. I have been instrumental in many special projects at HealthCore Clinic, including an image re-brand from Center for Health and Wellness to HealthCore Clinic in 2014, the 40,000 square-foot building expansion, which includes a walking path, Integrated Mobile Medical Clinic — deployed in 2020 during Covid-19 to provide the first drive-through testing site in Wichita, and opening a food pantry within the clinic to address food insecurity in our patient population.

Marketing Awards honoree for the Wichita Business Journal

What makes marketing important to your particular company or organization? Knowledge is power! It is extremely important to provide education and resources to the community about our services and other health related topics to allow patients to make informed decisions about their health care. At HealthCore, we do things a little differently by providing integrated health-care services and it's important to tell our story through our website, social media, and other outlets so others can benefit from those services.

What has been your greatest professional challenge? Covid-19 has been one of the greatest challenges in my professional career. As a health-care organization, our goal was to provide the most accurate and unbiased information possible to our patients and community. Our team worked diligently to update our website to include an informational Covid-19 page, that page was updated as we learned more about the virus and continues to change as we progress through this pandemic. When the vaccine became available, we launched a marketing campaign aimed at educating the community, with special focus on our vulnerable populations.

Who was your most important mentor? I've had a very supportive network of people in my life. My first would be my grandfather, he taught me to work hard and pay attention to the details and always provided unconditional love and support. My high school ceramics teacher, Gordon Zahradnik, also played an important role in my life. He provided me foundational design principles that I still use today. He encouraged creativity and pushed us to grow and develop our skills. I've had a very important mentor throughout my time at HealthCore Clinic, Teresa Lovelady, who is dedicated to improving health in the community. Working with her for the past 10 years has taught me to dream big and through hard work we can achieve great things. She encourages education and skill development, and without her I would not be where I am today.

What is your top professional achievement? I am very thankful in my current role, to be a part of an organization that impacts the community in a positive way.

***Installation of Chapter Officers
and Directors***

@ Crestview Country Club

In the Garden Room

Wednesday, September 8th

1000 N. 127th Street East,

Wichita, Ks 67207

5:30pm Social—6pm Dinner

Program to follow dinner

INCOMING OFFICERS for 2021-2022

President-Davna Gould

Vice President-Jessica Viramontez

Treasurer-Kathy Armbruster

Secretary- Sydney Tuttle

Sargent @ Arms-Allison L.

Membership-Jan B. and Valerie Brashears

Programs-Jessica Emrick

Communications-Ashley K.

Fund Raising-Lori Armstrong

Director @ Large-Allison W.

Advisor-Kristina Helm

EWI Menu

Green Jacket Salad

**Chicken Asiago & Basil Cream
Sauce, Vegetable du Jour, Herb**

Roasted Sea Salt Potatoes

Rolls, Tea and Coffee



2021-2022 EWI President

Davna Gould,

Chief Marketing Communications Officers HealthCore Clinic



Meritrust

Firm 10/20/2021



Executive for Julie Simon

JOLEY RILEY

Executive for Shannon Eggleston

MOJI ROSSON



Executive for Erika Koch

JESSICA BURROW



Meritrust Replacement

Representative for Debbie Pfingston

JULIE SIMON



Additional Representative

SHANNON EGGLESTON



Additional Representative

ERIKA KOCH

Welcome the Meritrust new faces and learn more about them and their Company on
Wednesday, October 20th from
5:30pm-7:30pm @ 151 N. Main Street



Early Bird Pricing will save members \$100 by registering by June 30th !

CONFERENCE REGISTRATION

\$750 - Regular Registration Ends Sept 10



LEADERSHIP CONFERENCE & ANNUAL MEETING

Albuquerque, New Mexico | Sheraton Uptown

REGISTRATION OPENS
MARCH 1, 2021

LEADERSHIP CONFERENCE & ANNUAL MEETING

September 16-18, 2021

EWI's Leadership Conference and Annual Meeting (LCAM) is an annual professional development conference where members from our Chapters gather to connect, network and grow professionally through keynote speakers, workshops, seminars, group discussions, and more. During LCAM, delegates also conduct the business of the organization during our annual meeting. We also hold social gatherings, Reading Rally events, recognize our members for their accomplishments, and learn new ideas.

KIM BECKING

Momentum Motivation

KEYNOTE ADDRESS

Resign as General Manager of the Universe: Five Keys to Avoid Burnout and Move from Chaos to Calm





August 7...Valerie Brashears

August 8...Candace Parry

August 18...Mariah Regier

August 23...Denise Wickham

September 5, ...Ann Brady & September 16...De Nelson

ABOUT EWI

Established in 1938, EWI is a non-profit organization with more than 1,900 member firms and 2,200 representatives in major cities throughout the United States and Canada.

EWI brings members together to promote member firms, to enhance personal and professional development, and to encourage community involvement.

As a premier organization for networking and leadership development for today's business professionals, EWI offers professional development through its Academy of Leadership, scholarships, online learning, and philanthropic initiatives with a focus on literacy.

EWI also provides over 600 board positions to women on the corporate and chapter level annually. For more information, visit ewiconnect.com



Executive Assistant/Office Manager

Cortney Ihde

Work: 262.269.5625
Personal: 262.443.0814

DON'T FORGET

We post the chapter meeting minutes on our EWI Wichita website at: <https://ewiwichita.org/>

EWI Corporate Board of Directors

Our Corporate Board members lead and guide our organization and represent Chapters from across the country. Below is our 2020-2021 board.



Corporate President
Kristi Emmons Jones
 Amare Global
 EWI of Memphis
 kemm64@gmail.com



President-Elect
Christine Healy
 The Printer Inc.
 EWI of Des Moines
 chealy1142@gmail.com



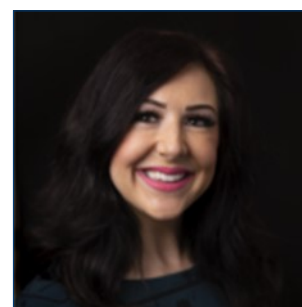
Secretary/Treasurer
Charlie Rosenquist
 Blue Cross/Blue Shield of TN
 EWI of Chattanooga
 charlie_rosenquist@bcbst.com



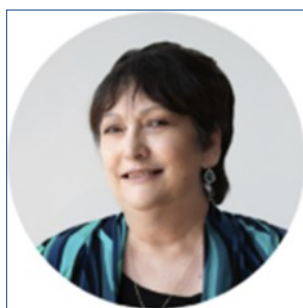
Director
Kathy Scott
 Balls Foods
 EWI of Kansas City
 46director@ballsfoods.com



Director
Cheryl Holmes
 CASTO
 EWI of Columbus
 cholmes@castoinfo.com



Director
Christine Laird
 Greater OKC Chamber
 of Commerce
 EWI of OKC
 claird@remergeok.org



Director
Marji Zamora
 Speedy Printing
 EWI of Houston
 marji@speedyprintingtx.com



Advisor
Felicia J. Senter
 Tulsa Tech
 EWI of Tulsa
 felicia.senter@tulstatech.edu

EWI of Wichita Social Media:

EwiOfWichita



ewiwichita



Ewiofwichita



ewiofwichita

Share events, photos, accomplishments and more with EWI Wichita Membership in one convenient location! Email social media submissions to Pam Dinwiddie at pdinwiddie@txtav.com

Share your news & photos in the monthly
Connect

Contact: Jessica Emrick
Jessica.emrick@wichitamariott.com

**Deadline for September Issue:
October 5, 2021**

Upcoming Chapter Meetings

*Third Wednesday of each month
unless otherwise noted.*

Installation of Officers

Wednesday, September 8th

Crestview Country Club-Garden Room

1000 N. 127th Street East

Wichita, Ks

NOTE: Second Wednesday of September

Meritrust Firm Night

October 20th

151 N. Main

5:30pm-7:30pm

Chapter Board Meetings

*Second Tuesday of each month
unless otherwise noted.*

All members are welcome.

Contact Kristina Helm
Kristina@westernassociates.com