

Wichita ewiConnect



2022-2023 President Allison Walden
Downing & Lahey Mortuary

Inside this Connect

Page 1: President's Message

Page 2: June Fundraiser
Meeting Information

Page 3: LCAM Registration
Information

Page 4: May Membership Drive
and June Board Meeting Recap

Page 5: Treasurer's Report

Page 6: Director Messages

Page 7: Membership Update

Page 8: Member Firm Spotlight

Page 9: Future Meeting Dates
and June Birthdays

Page 10: Contact Information

I want to take a moment to congratulate Sydney Tuttle, Membership Director (Delta Dental of Kansas), and her membership team for the successful Membership Drive last month. The work and organization that went into the meeting was apparent and well-received by our guests!

The June fundraiser is NEXT WEEK! We hope you can join us next Wednesday, June 21, at Chicken N Pickle from 6:00—8:00 p.m. for the trivia fundraiser. You can come on your own and be placed with a team OR bring your own team of six people. This is a great way to show your co-workers, executive, friends, or spouse, what EWI is all about while playing group trivia. Register via SquadUp: <https://www.squadup.com/events/ewi-of-wichita-june-fundraiser-event>

Sponsorship opportunities are still available and needed! We are looking for bottles of wine for the wine pull, silent auction items, and a full or partial food sponsor at \$900. Please consider a donation to help us meet our fundraising goals. I leave you with a few summer book suggestions!

Sincerely,

A handwritten signature in blue ink that reads "Allison Walden".

Allison



Thriller/Mystery: *The Family Upstairs* by Lisa Jewell
Historical Fiction: *The Four Winds* by Kristin Hannah
Romance: *Love and Other Words* by Christina Lauren

SAVE THE DATE

ALL MEMBERS MUST RSVP. YOU WILL BE BILLED FOR THE MEETING FEE IF YOU DO NOT.

Don't remember if you RSVP'd? Email Pam Dinwiddie:

PDinwiddie@e-aviation.com

<https://www.squadup.com/events/ewi-of-wichita-june-fundraiser-event>

Wichita ewi

TRIVIA NIGHT

JUNE 21 6-8 PM, CHICKEN & PICKIE

Set in Teams of Six - Bring your Friends, Co-workers, and Executives! Our goal is to have fun and raise funds for EWI Wichita's Philanthropic Initiatives!

**\$45 Per Person or
\$250 for a team of 6**

**TEAM TRIVIA
SILENT AUCTION
WINE PULL**

DONATE

**Wine, Silent Auction Baskets,
Sponsor: Food \$900, Bar \$500**

Contact Davna: dgould@healthcoreclinic.org

SAVE THE DATE



LEADERSHIP CONFERENCE & ANNUAL MEETING

September 13-16, 2023
The Chattanooga, Chattanooga, TN

EWI's Leadership Conference and Annual Meeting (LCAM) is an annual professional development conference where members from our Chapters gather to connect, network and grow professionally. Keynote speakers, workshops, seminars, group discussions, and more offer diverse learning opportunities. Social gatherings provide networking and establish new connections. Reading Rally events and other philanthropic activities reach the local community and help the Chapters learn how to implement programming in their communities. Our annual Celebration Gala allows recognition of our members and the many successes of our Chapters. Delegates representing each Chapter meet to approve the budget, elect the slate of officers and conduct the business of the organization during our annual business meeting.

- ♦ View all information about the conference by visiting the [EWI Corporate Website](#).
- ♦ If you want to attend LCAM—please do! We encourage all members to participate in this conference for great professional development opportunities.
- ♦ **Register before June 30 to save \$100!**
- ♦ If you'd like to fly with the group please use the following details: Book through Travelocity to arrive in Chattanooga on Tuesday, September 12 and depart for Wichita on Saturday, September 16. September 12 flight: American Airlines 8:06 a.m.—1:21 p.m.. September 16 flight: United Airlines 5:10 p.m.—9:44 p.m.
- ♦ For questions about this year's LCAM reach out to Davna Gould, Sydney Tuttle, Pam Dinwiddie, or Ashley Goodman who will be the Board members attending!



Pictures from 2022 LCAM!

MEETING RECAP

May 2023 Membership Drive



- ◆ Held at the Redler Institute of Culinary Arts (Butler Community College)
 - ◆ We invited guests to learn all about EWI!
- ◆ This included several members and board members talking about their experiences and what makes EWI special and beneficial.
 - ◆ We played businesswoman BINGO!

MEETING RECAP

June 2023 Board Meeting

- ◆ Held at HealthCore Clinic on June 8, 2023
- ◆ Treasurer is working on fixing issues setting up Venmo account and the board discussed simplifying credit card procedures.
- ◆ President Allison Walden is working on individual awards applications due to corporate July 7 and Chapter of Excellence application due July 31.
- ◆ Discussed June fundraiser meeting and the rest of the meetings for this board's year including officer installation.

Director Messages

Treasurer's Report
Emma Hahn, Treasurer
Stoutheart Financial Group

Commerce Bank Chapter Operating Account:

5/1/23 Opening Balance: \$22,154.49

5/31/23 Reconciled Balance: \$21,202.24

Deposits:

1. March Regular Meeting Dues: \$90.00
2. April Fundraiser Meeting Dues: \$1,215.00
3. Tulsa Trip Fundraiser Collections: \$90.00
4. Firm Dues: \$230.00
5. PayPal Distribution: \$404.85

Expenses:

1. Regular Meeting Expense: \$1,448.62
2. Web Hosting: \$259.48
3. Service Charge: \$14.00
4. Transfers to BDCP (April Fundraiser): \$1,260.00

Commerce Bank BDCP Account:

5/1/2023 Opening Balance: \$693.70

5/31/2023 Reconciled Balance: \$1,548.85

Deposits:

1. Transfers from Operating (April Fundraiser): \$1,260.00

Expenses:

1. PayPal Distribution: \$404.85

Meritrust Credit Union Savings Account:

5/1/23 Opening Balance: \$24,283.15

5/31/23 Reconciled Balance: \$24,284.18

Deposits:

1. Interest: \$1.03

No expenses.

Ameriprise BDCP Account (Korol Financial):

Statement not yet available.



Please send payments to:

Emma Hahn
Stoutheart Financial Group
8621 E. 21st St. N.
Ste. 130
Wichita, KS 67206

Director Messages

Scholarship judging and applications are complete! All the candidates were notified, win or lose, and our two winners are very excited to have been selected. Bernice Gaines is our ASIST winner this year and Kailey Smith is our EWISP winner. They will both be able to attend the August meeting as of now. We had a great pool of candidates this year, they were few but mighty. The judges were very good about remaining on time and asking any questions if they had concerns.

Annie Murach, At-Large Director, United Way of the Plains



Happy Summer! I have gotten more and more excited each month as LCAM in Chattanooga, Tennessee gets closer. I will be attending this year for the first time and hope to have several other individuals from the chapter attend with me. The conference will be held September 13-16 and offers a chance to connect with member chapters, member firms, and individuals from across the country. This is a great time to work on networking for your firm as well as grow professionally and personally! For more information on LCAM, you can visit ewiconnect.com/page/lcam2023 or give me a shout! Early bird registration for \$100 off ends June 30. If you need assistance in demonstrating the value of this conference to your firm, please reach out to me and I can gather some resources and information for you. You can always reach me on my cell (316) 252-5425 or at Ashley.Goodman@imacorp.com

Ashley Goodman, Vice President, IMA Financial Group

**"HAPPINESS IS NOT IN
THE MERE
POSSESSION OF
MONEY; IT LIES IN
THE JOY OF
ACHIEVEMENT, IN THE
THRILL OF CREATIVE
EFFORT."**

FRANKLIN D. ROOSEVELT

ewi

MEMBERSHIP UPDATE



Greater Wichita
Partnership

New Firm and Representative, New Executive

Bonnie Simmons and Jeff Fluhr

Greater Wichita Partnership

As the reception and administrative coordinator, Bonnie provides organizational support through operational and event management, coordination of calendars and in-office meetings and direct support for the various Boards and Senior Staff team. With more than 25 years of experience, Bonnie has worked alongside an executive team of a Fortune 500 company as the executive administrative assistant at National Beef in Dodge City and also the executive administrative assistant and deputy clerk for the USD 443 School Board for more than 14 years. Bonnie brings an array of experience in not only human resources but also a multiplicity of administrative task skills. Bonnie is a native of Southwest Kansas and has been an advocate for abused and battered women, serving as a women's shelter advocate. Bonnie is inspired daily by her husband Jim and their four boys and three grandsons. In her free time, Bonnie likes long-distance bike rides, crafting, and attending activities with her children and grandchildren as well as serving at her local church.

Thirteen years ago, a group of local leaders recruited Jeff Fluhr from Baton Rouge to Wichita to serve as the president of the Wichita Downtown Development Corporation, now Downtown Wichita. Six years ago, Jeff's role was expanded to assist in creating the Greater Wichita Partnership, an economic development organization focused on developing a unique, holistic approach to community growth from downtown to the ten-county region. During his time as president of the Greater Wichita Partnership, Jeff has led efforts to oversee and advance the three strategic priorities of the organization, including the concurrent development of three extensive strategic plans—the Regional Growth Plan, the Talent Marketing Blueprint, and Project Wichita. Additionally, under his leadership, the Partnership has cultivated company growth within the region resulting in over 10,000 new jobs, \$2.5 billion in total capital investment, and approximately \$500 million in total annual payroll since 2015. Jeff is married to Melissa and they have two children, a son Matthew and a daughter Anna Joy.

Welcome to EWJ of Wichita!

MEMBER FIRM SPOTLIGHT

"I had inquiries from several of you after our May membership drive hosted in the Redler Institute of Culinary Arts about community education classes and good news! There are now some available." :) - Hayley Hobbs, Communications Director, Butler Community College Foundation



Redler

Institute of Culinary Arts
BUTLER COMMUNITY COLLEGE

SUMMER RECREATIONAL COOKING CLASSES

with Chef Luis Peña



EUROPEAN PASTRIES

Saturday, June 17 | 1:00pm – 4:00pm



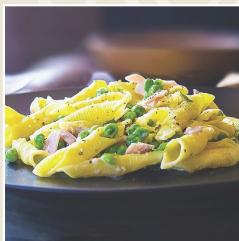
Recreate a European bakery at home with this selection of delectable pastries. Together, we'll tackle the Jewish classic pastry Rugelach and the beautiful, tasty Spritz cookie. Grab a friend, family member or even bring your coworkers to learn, create and taste these pastries. Drinks and small bites will be provided.

Register with QR code or at: bit.ly/RedlerSummer2



HANDMADE PASTA

Saturday, June 24 | 5:00pm – 8:00pm



Making pasta dough by hand and turning it into countless shapes is not only easy; it's fantastically fun. In this class, you will learn those skills as well as how to prepare various sauces appropriate for each pasta shape. You'll make then dine on: hand-crafted Tagliatelle and Garganelli paired with two classic seasonal sauces. Drinks and small bites will be provided.

Register with QR code or at: bit.ly/RedlerSummer

Classes held at the Redler Institute of Culinary Arts:

622 E. Cloud Ave | Andover KS, 67002

Cost is \$120 per person per class.

Register today! Size is limited to 32 for each class.



Future Meeting Dates

- ♦ June Trivia Fundraiser! June 21, 2023, 6:00 p.m. at Chicken N Pickle
- ♦ July Board Meeting: July 6, 2023, 3:00 p.m. at HealthCore Clinic
- ♦ July Chapter Meeting: July 19, 2023, 4:00 p.m. at Western Associates in Marion, Kansas
- ♦ August Board Meeting: August 3, 2023, 3:00 p.m. at HealthCore Clinic

You can view all of our upcoming meeting dates on our website via the [Chapter Calendar](#)

Follow us on social media!

Facebook: EWI of Wichita

Instagram: @ewiofwichita



JUNE BIRTHDAYS!

June 5—Carlotta Gentry, HealthCore Clinic

June 9—Jennifer Clark

June 10—Ashley Goodman, IMA Financial Group, Inc.

June 18—Sasha Berg-Reevey, Chicken N Pickle

June 21—Jessica Buettgenbach, Visit Wichita

June 21—Sydney Tuttle, Delta Dental of Kansas

June 28—Judy Worrell, Alumni Member

Contact us!

*Below you'll find information to contact your 2022-2023
Board of Directors as well as Corporate EWI*

Allison Walden—President | waldena@dlwichita.com | 316.682.4553

Ashley Goodman—Vice President | ashley.goodman@imacorp.com | 316.252.5425

Jessica Buettgenbach—Secretary | jbuettgenbach@visitwichita.com | 316.660.6331

Emma Hahn—Treasurer | emma.hahn@ampf.com | 316.630.8118

Davna Gould—Advisor and Fundraising Director | dgould@healthcoreclinic.com

Pam Dinwiddie—Sergeant-at-Arms | pdinwiddie@e-aviation.com

Annie Murach—Director-at-Large | amurach@unitedwayplains.org

Hayley Hobbs—Communications Director | hhobbs@butlercc.edu

Sydney Tuttle—Membership Director | stuttle@deltadentalks.com

Jennifer Clark—Programs Director | jenc1298@msn.com

EWI Corporate Office

ewiconnect.com

ewi@ewiconnect.com

262.269.5625